

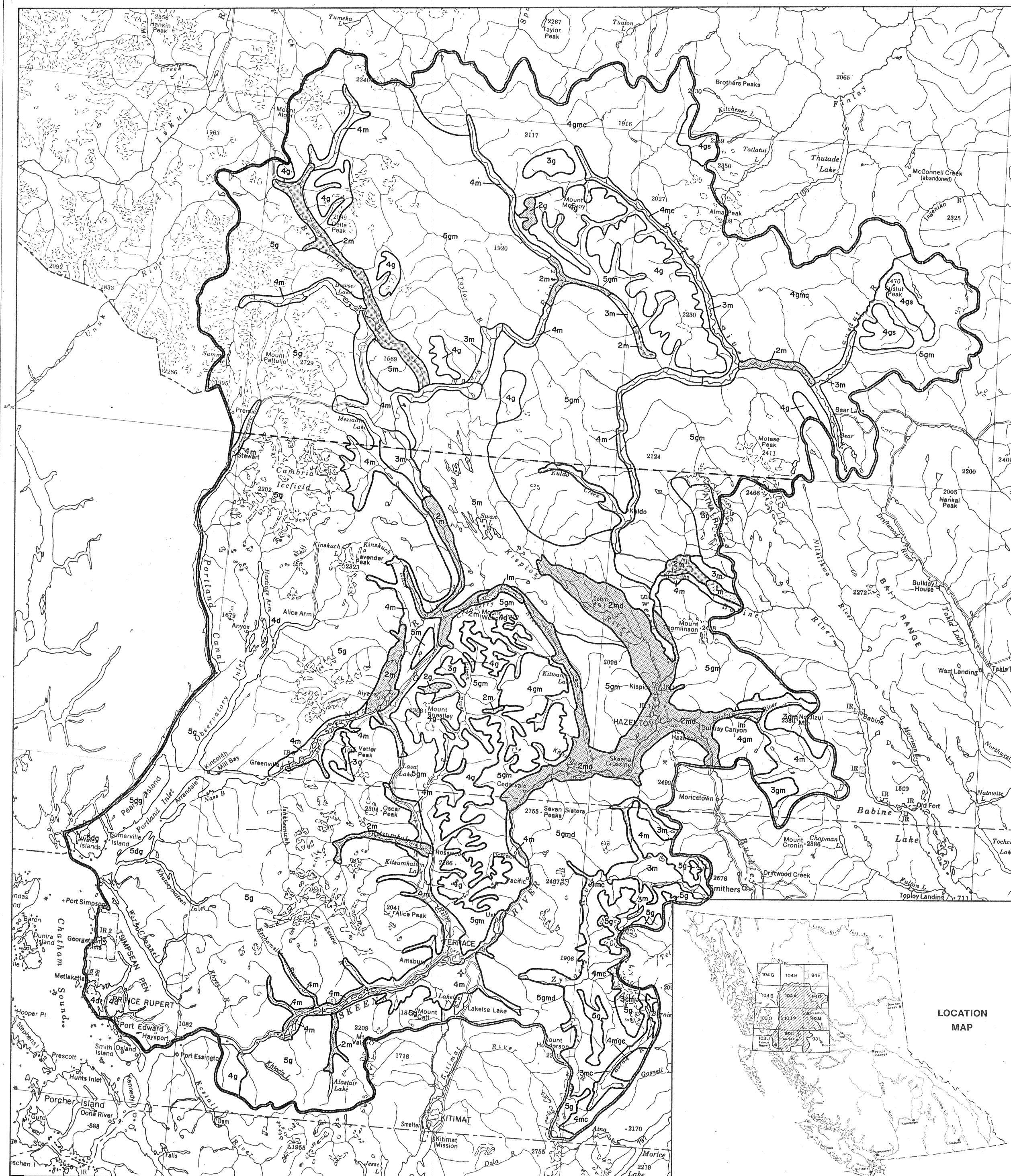
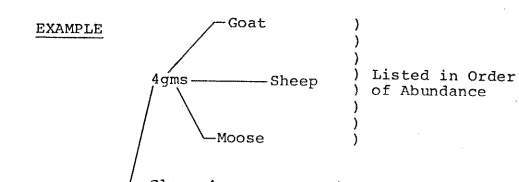
TERRACE-HAZELTON FOREST RESOURCES STUDY

LAND CAPABILITY FOR UNGULATES

1. **VERY HIGH CAPABILITY**
Lands which, for the most part, have a very high capability to support wild ungulates. This class is mainly a grouping of C.L.I. Classes 1W, 1 and 2W.
 2. **HIGH CAPABILITY**
Lands which, for the most part, have a high capability to support wild ungulates. This class is mainly a grouping of C.L.I. Classes 2 and 3W.
 3. **MODERATE-HIGH CAPABILITY**
Lands which, for the most part, have a moderate to high capability to support wild ungulates. This class mainly includes C.L.I. Class 3.
 4. **MODERATE-LOW CAPABILITY**
Lands which, for the most part, have a moderate to low capability to support wild ungulates. This class mainly includes C.L.I. Class 4.
 5. **LOW CAPABILITY**
Lands which, for the most part, have little or no capability to support wild ungulates. This class is mainly a grouping of C.L.I. Classes 5, 6 and 7.
- * Due to the scale of presentation and/or the exploratory level of data collection, units of class 4 and 5 may contain lands of higher capability that have not been delineated. This is especially true of lands of importance primarily for mountain goats.

Note: The mapping north of 56°00' N. latitude has been derived from incomplete C.L.I. winter survey data and Fish and Wildlife regional maps, and is of lower reliability than the southern portion. The mapping south of 56°00' N. latitude has been generalized from the 1:250,000 C.L.I. maps; for more detailed information, refer to original 1:125,000 and 1:250,000 manuscripts filed in the F.L.U.C. Secretariat Map Library.

SYMBOL	UNGULATE SPECIES
m	Moose
d	Deer
c	Caribou
g	Mountain Goat
s	Mountain Sheep



ENVIRONMENT AND LAND USE COMMITTEE SECRETARIAT VICTORIA, B.C.	
COMPILED BY: S.L.I.	AMENDMENTS:
DRAWN BY: A.K.C.-D.J.	
DATE: JULY 29, 1979	
CHECKED BY: D.A.SCH	PROJECT:
DATE: FEB. 1976	SHEET 5 OF 11

SCALE 1:1,000,000

