

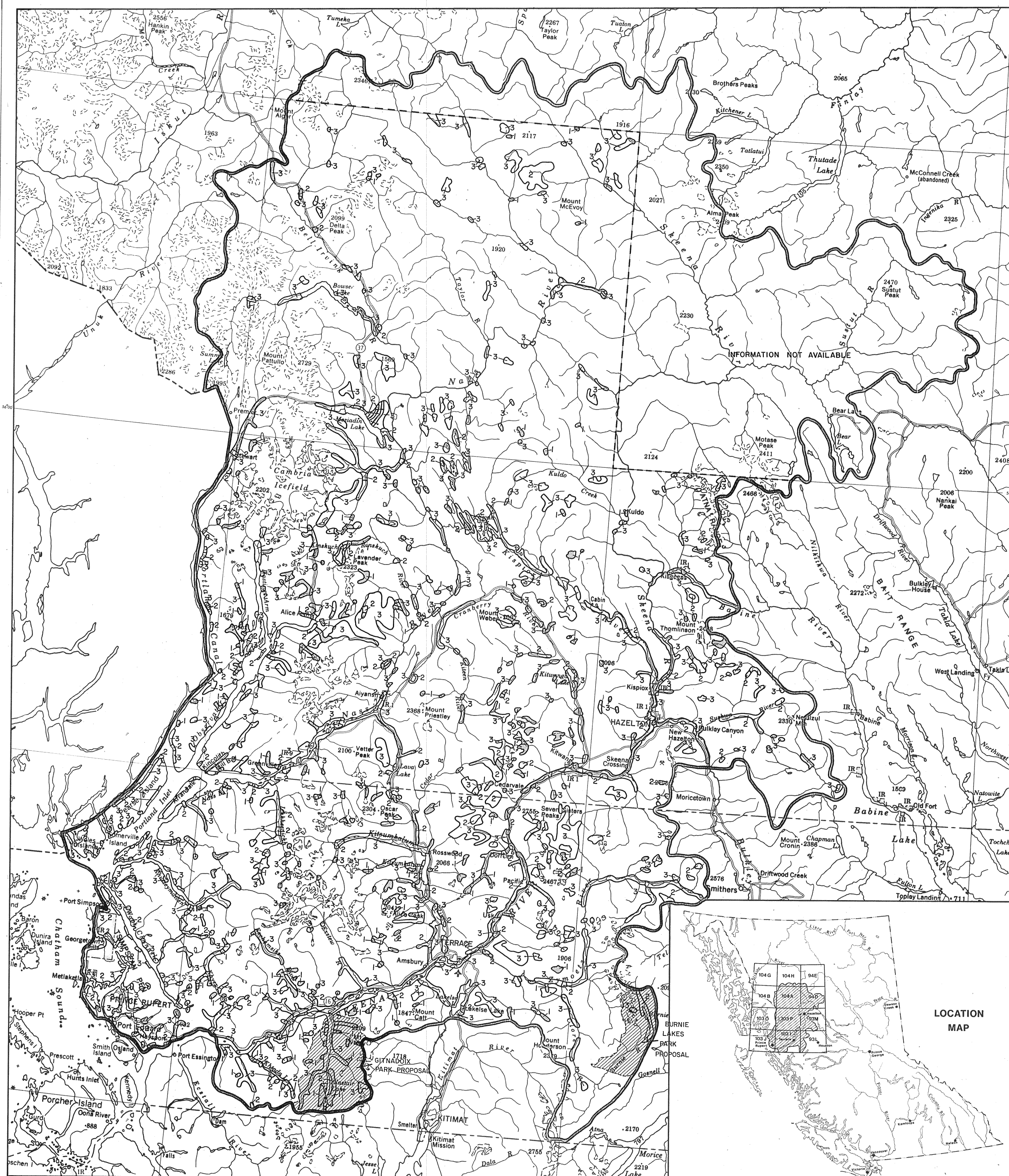
TERRACE-HAZELTON FOREST RESOURCES STUDY

LAND CAPABILITY FOR OUTDOOR RECREATION

- 1 Site Specific Units - These units may include waterfalls, historic sites, thermal springs. In most cases these units should receive careful consideration in folio plans.
 - 2 Shoreline Units - These areas provide excellent to good opportunities for water associated recreational activities such as bathing, camping, boating. Some of these units should receive careful consideration in folio plans.
 - 3 Upland Units - These areas provide excellent to good opportunities for upland recreational use. They may include alpine units, important wildlife areas, and view sites. Some of these units should receive careful consideration in folio plans.
 - Moderate to limited outdoor recreation capability which occasionally contain high site features.
 - Areas assessed by the B.C. Parks Branch containing exceptional recreational values.
- * This map provides generalized recreation information at a scale of 1:500,000. It is these areas which must be considered to have important recreation values if timber harvesting is to take place.

NOTE: Generalized from 1:250,000 Land Capability of Outdoor Recreation; for more detailed information, refer to original 1:250,000 summary maps, 1:250,000 C.L.I. maps and 1:50,000 C.L.I. maps filed in the E.L.U.C. Secretariat Map Library.

93L (1966)	Level of detail less than later survey
104A	Air photo checking and limited field work
Remainder of mapsheets	Later surveys of high detail



**LOCATION
MAP**

ENVIRONMENT AND LAND USE COMMITTEE SECRETARIAT VICTORIA, B.C.	
COMPILED BY J.B.	AMENDMENTS:
DRAWN BY A.K.C.	
DATE JAN. 1976	
CHECKED BY B.C.M.	PROJECT:
DATE FEB. 1976	SHEET 4 OF 8

SCALE 1:1,000,000

