

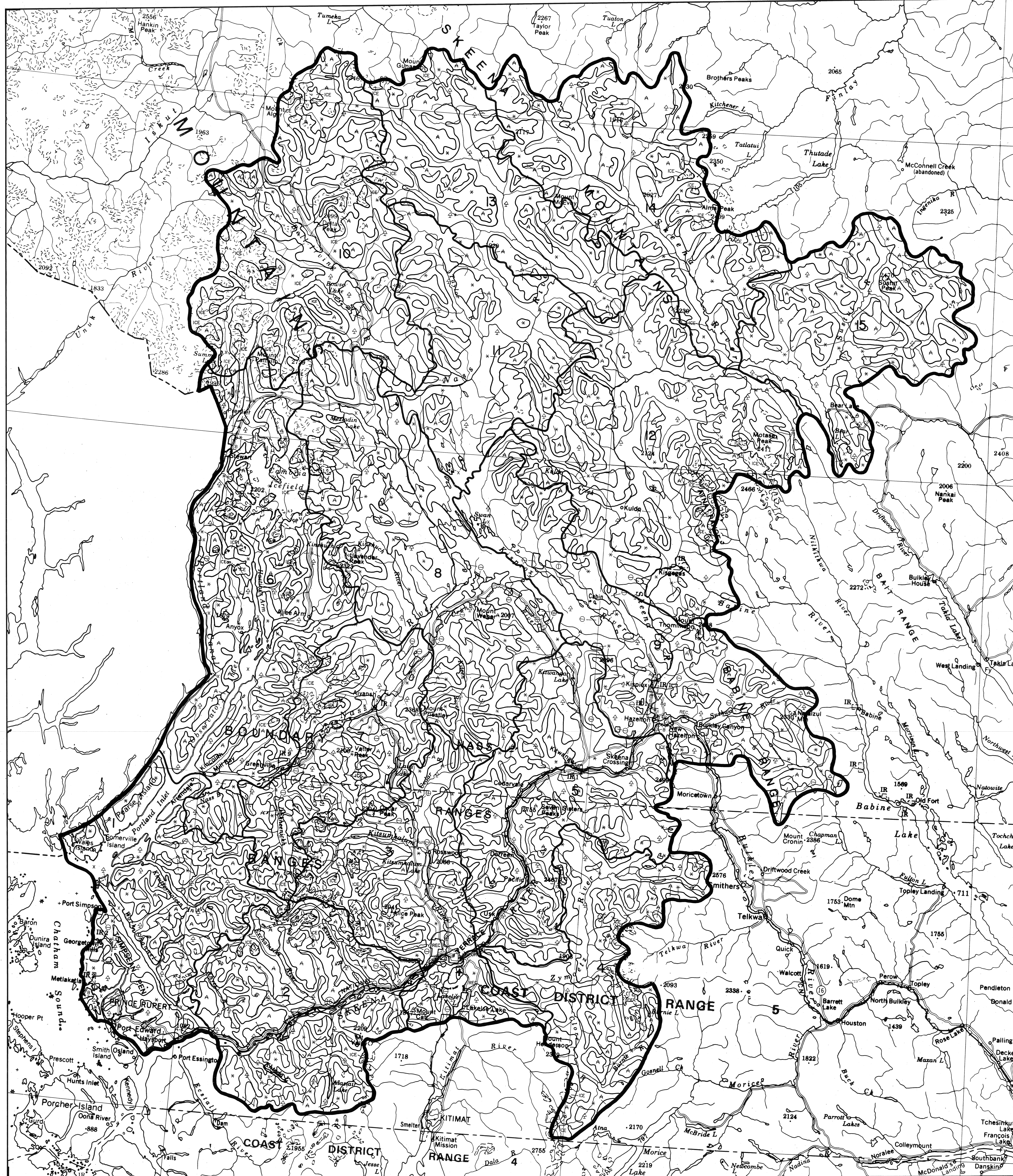
TERRACE-HAZELTON FOREST RESOURCES STUDY

GENERALIZED PRESENT LAND USE

These maps will be considerably generalized and will only use existing PLU symbols where the classification is basically unchanged from existing PLU maps. Annotation will be used to amplify the classification where this may be significant.

- X Permanent water bodies
- ICE Permanent ice and snow fields.
- A Alpine tundra-area above the tree line.
- C Cutable timber (timber volume according to F.C.M.) but excluding areas cut or burnt since F.C.M. was made.
- C Cut
- B Burnt
- CB Cut & burnt
- * Wildland complex includes all natural or semi-natural vegetation not covered by other classifications, especially those preceding this classification, i.e. immature timber, rock, sandbars, non-productive and alpine forest, marshes, open range, meadows, minor water bodies, etc.
- REC Recreation areas, dedicated parks unless otherwise annotated.
- B Urban areas as an existing PLU, except D.N.D.-D.O.T. property. Mainly industrial, commercial and residential. Large commercial and industrial units may be separated by dashed lines and annotated where desirable.
- E Mines and tailings ponds annotated.
- AG Agriculture - rangeland, unimproved and improved pasture, cropland and intensive use such as truck and poultry farms. Discrete units may be annotated.

Generalized from 1:50,000 Forest Cover maps.



GEOGRAPHIC DIVISION
ENVIRONMENT AND LAND USE COMMITTEE
SECRETARIAT
VICTORIA, B.C.

COMPILED BY: A.C.M.T.	AMENDMENTS:
DRAWN BY: D.W.D.J.	
DATE: OCT. 75	
CHECKED BY: B.C.M.	PROJECT:
DATE: OCT. 75	SHEET: OF

SCALE 1:500,000

