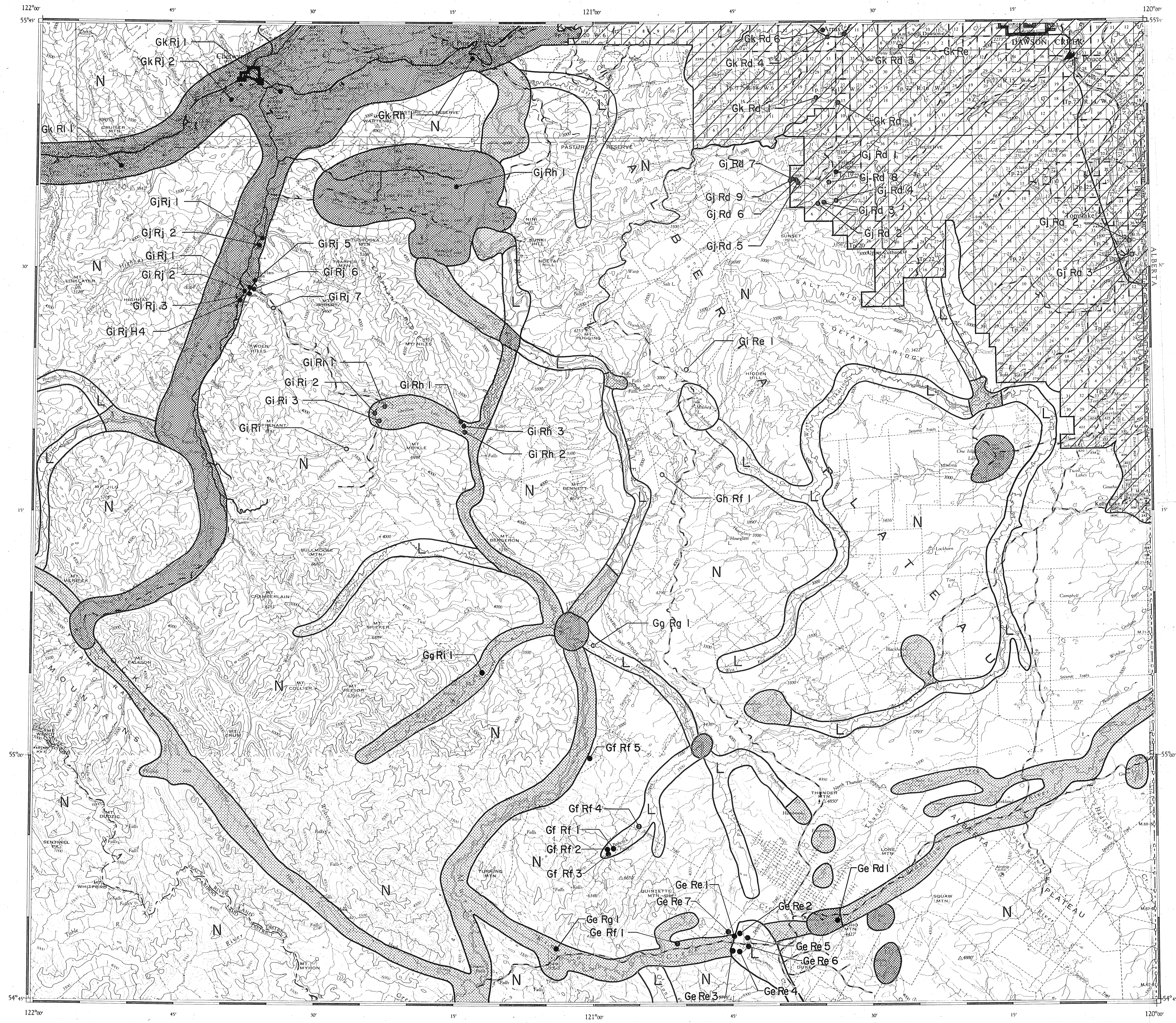


NORTHEAST COAL STUDY CORE AREA RESOURCE PLANNING FRAMEWORK



HERITAGE RESOURCES

HERITAGE RESOURCE POTENTIAL

- | | | |
|--|------------------------------------|---|
| | HIGH POTENTIAL | <ul style="list-style-type: none">- River confluences- River terraces near confluences- Large lake inlet and outlet zones- Areas adjacent to rapids- Confluences of rivers with large creeks- Areas near known archaeological and historical sites |
| | MODERATE POTENTIAL | <ul style="list-style-type: none">- Large river valleys- Large creek valleys- Upland meadows- Large lake basins- Small lake inlet and outlet zones |
| | LOWER POTENTIAL | <ul style="list-style-type: none">- River floodplains- Large creek floodplains- Small lake basins- Muskeg areas along river and creek valleys- High relief areas along river and creek valleys |
| | NEGLIGIBLE TO NIL POTENTIAL | <ul style="list-style-type: none">- Other areas |

KNOWN HERITAGE SITES

- Gh Rf 1 Archaeological site with designation number assigned by the Provincial Archaeological Site Inventory.

NOTES

- Heritage resources include historical, architectural, archaeological and palaeontological remains of man's past activities.
- Heritage resource potential ratings are based on a very preliminary knowledge of the association of heritage resources with natural environments, using existing documentation of historical, archaeological and ecological factors in this and adjacent areas.
- The map is not a substitute for site-specific investigations for design purposes.
- Background information for designated archaeological sites is available through the Heritage Conservation Branch.

SOURCES: Heritage Conservation Branch, 1980-01-14.
Petro-Canada, 1981-04-30
Denison Mines Ltd., 1982-04

Base map provided by Surveys and Mapping Branch, Ministry of Environment, Victoria, B.C. Contains portions of NTS sheets 931 and P. Contour interval 500 feet

