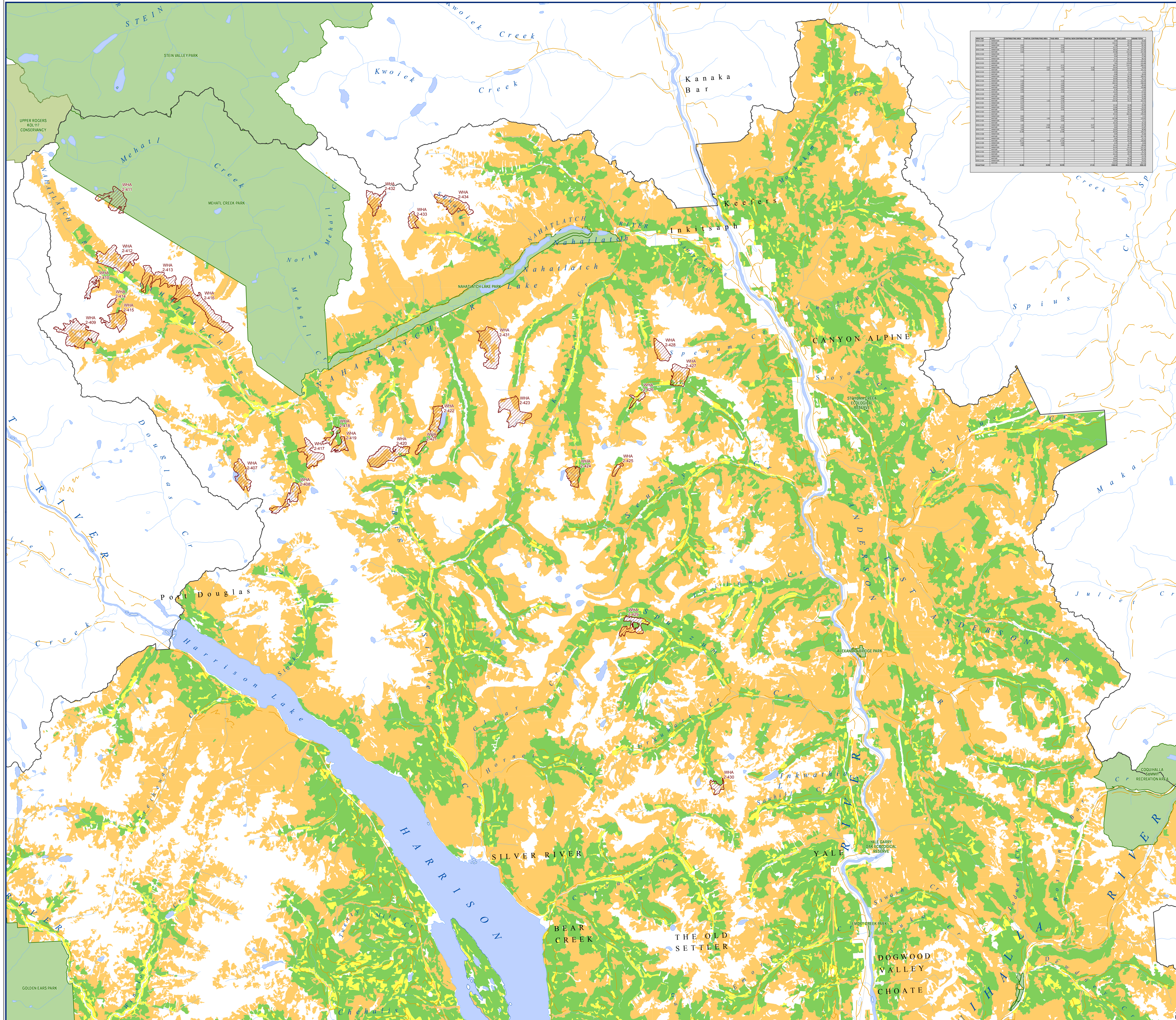
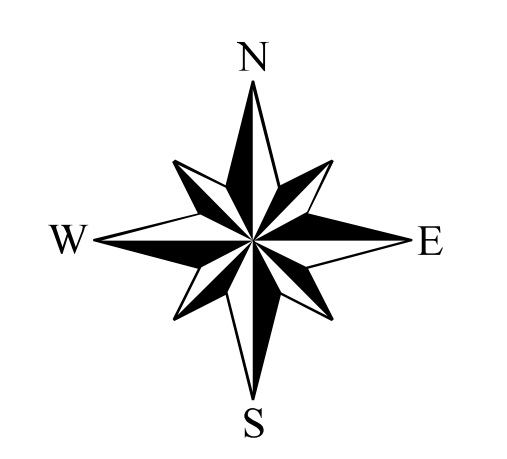
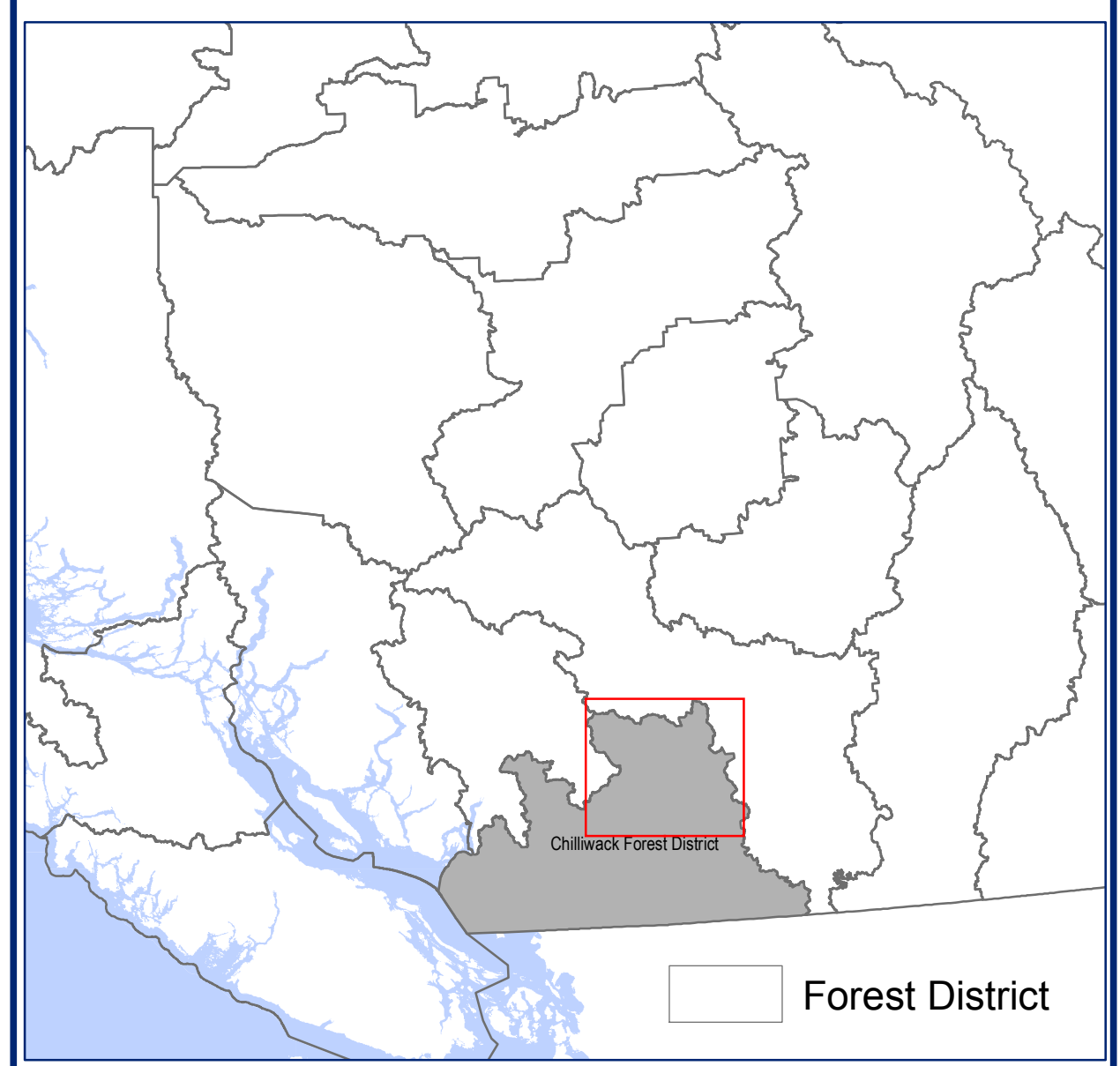


Proposed Grizzly Bear Wildlife Habitat Areas - Chilliwack Forest District



WHA ID	Area (ha)	Contributing (ha)	Partial Contributing (ha)	Non-Contributing (ha)
WHA 2-411	150	100	50	0
WHA 2-412	120	80	40	0
WHA 2-413	180	120	60	0
WHA 2-414	100	70	30	0
WHA 2-415	140	90	50	0
WHA 2-416	160	110	50	0
WHA 2-417	130	80	50	0
WHA 2-418	110	70	40	0
WHA 2-419	170	110	60	0
WHA 2-420	190	130	60	0
WHA 2-421	140	90	50	0
WHA 2-422	160	100	60	0
WHA 2-423	120	80	40	0
WHA 2-424	150	100	50	0
WHA 2-425	130	90	40	0
WHA 2-426	170	110	60	0
WHA 2-427	140	90	50	0
WHA 2-428	160	100	60	0
WHA 2-429	120	80	40	0
WHA 2-430	180	120	60	0
WHA 2-431	150	100	50	0
WHA 2-432	130	90	40	0
WHA 2-433	170	110	60	0
WHA 2-434	140	90	50	0
WHA 2-435	160	100	60	0
WHA 2-436	120	80	40	0
WHA 2-437	180	120	60	0
WHA 2-438	150	100	50	0
WHA 2-439	130	90	40	0
WHA 2-440	170	110	60	0
WHA 2-441	140	90	50	0
WHA 2-442	160	100	60	0
WHA 2-443	120	80	40	0
WHA 2-444	180	120	60	0
WHA 2-445	150	100	50	0
WHA 2-446	130	90	40	0
WHA 2-447	170	110	60	0
WHA 2-448	140	90	50	0
WHA 2-449	160	100	60	0
WHA 2-450	120	80	40	0
WHA 2-451	180	120	60	0
WHA 2-452	150	100	50	0
WHA 2-453	130	90	40	0
WHA 2-454	170	110	60	0
WHA 2-455	140	90	50	0
WHA 2-456	160	100	60	0
WHA 2-457	120	80	40	0
WHA 2-458	180	120	60	0
WHA 2-459	150	100	50	0
WHA 2-460	130	90	40	0
WHA 2-461	170	110	60	0
WHA 2-462	140	90	50	0
WHA 2-463	160	100	60	0
WHA 2-464	120	80	40	0
WHA 2-465	180	120	60	0
WHA 2-466	150	100	50	0
WHA 2-467	130	90	40	0
WHA 2-468	170	110	60	0
WHA 2-469	140	90	50	0
WHA 2-470	160	100	60	0
WHA 2-471	120	80	40	0
WHA 2-472	180	120	60	0
WHA 2-473	150	100	50	0
WHA 2-474	130	90	40	0
WHA 2-475	170	110	60	0
WHA 2-476	140	90	50	0
WHA 2-477	160	100	60	0
WHA 2-478	120	80	40	0
WHA 2-479	180	120	60	0
WHA 2-480	150	100	50	0
WHA 2-481	130	90	40	0
WHA 2-482	170	110	60	0
WHA 2-483	140	90	50	0
WHA 2-484	160	100	60	0
WHA 2-485	120	80	40	0
WHA 2-486	180	120	60	0
WHA 2-487	150	100	50	0
WHA 2-488	130	90	40	0
WHA 2-489	170	110	60	0
WHA 2-490	140	90	50	0
WHA 2-491	160	100	60	0
WHA 2-492	120	80	40	0
WHA 2-493	180	120	60	0
WHA 2-494	150	100	50	0
WHA 2-495	130	90	40	0
WHA 2-496	170	110	60	0
WHA 2-497	140	90	50	0
WHA 2-498	160	100	60	0
WHA 2-499	120	80	40	0
WHA 2-500	180	120	60	0

- Grizzly Bear Wildlife Habitat Areas
- Forest District
- Provincial Parks and Protected Areas
- Conservancies
- Timber Harvesting Land Base**
 - Contributing
 - Partial Contributing
 - Non-Contributing



1:100,000



Date Created: October 19, 2010
Projection/Datum: BC Standard Albers, NAD83
Base Map Scale: 1: 250,000
Map Document: chilliwack_proposed_gbha_wha.mxd
Created By: South Coast Service Centre, HG

Disclaimer:
 The proposed boundaries present on this map are intended for consultation purposes only. Any detailed review should be performed using the original source data.