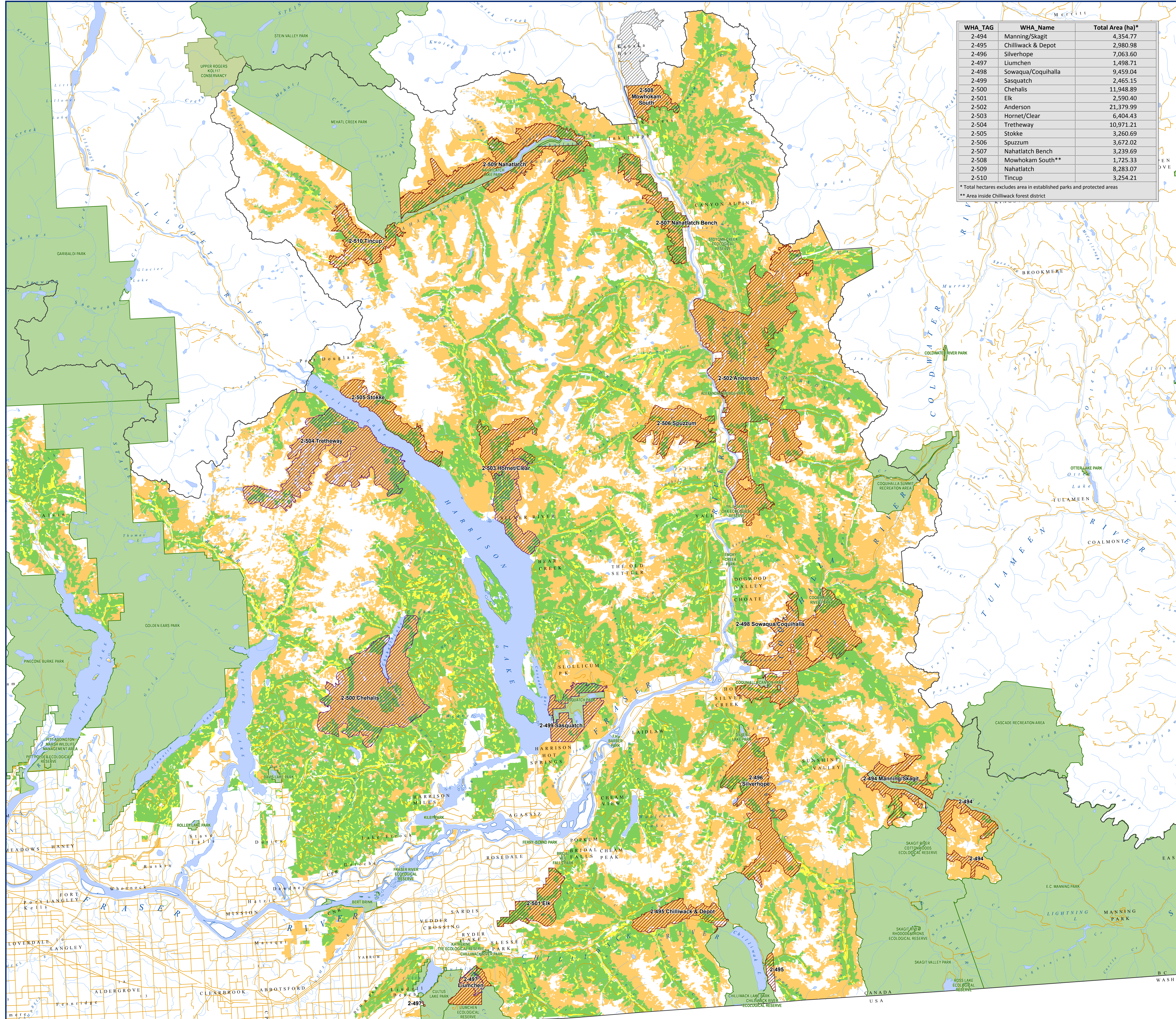
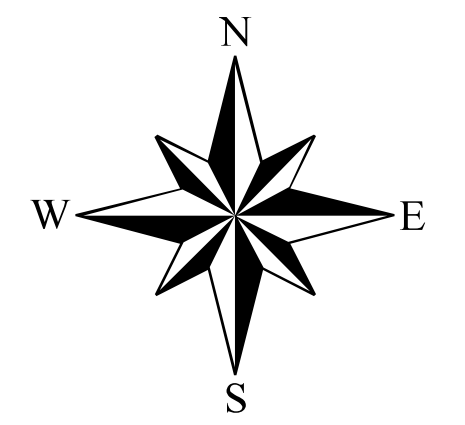


Proposed Spotted Owl Wildlife Habitat Areas - Chilliwack Forest District



WHA_TAG	WHA_Name	Total Area (ha)*
2-494	Manning/Skagit	4,354.77
2-495	Chilliwack & Depot	2,980.98
2-496	Silverhope	7,063.60
2-497	Liumchen	1,498.71
2-498	Sowaqua/Coquihalla	9,459.04
2-499	Sasquatch	2,465.15
2-500	Chehalis	11,948.89
2-501	Elk	2,590.40
2-502	Anderson	21,379.99
2-503	Hornet/Clear	6,404.43
2-504	Tretheway	10,971.21
2-505	Stokke	3,260.69
2-506	Spuzzum	3,672.02
2-507	Nahatlatch Bench	3,239.69
2-508	Mowhokam South**	1,725.33
2-509	Nahatlatch	8,283.07
2-510	Tincup	3,254.21

* Total hectares excludes area in established parks and protected areas
 ** Area inside Chilliwack forest district



1:165,000



- Proposed Spotted Owl Wildlife Habitat Area**
- Long Term Owl Habitat Area
 - Managed Future Habitat Area
 - To Be Established By Region 3
 - Forest District
 - Provincial Parks and Protected Areas
 - Conservancies
- Timber Harvesting Land Base**
- Contributing
 - Non-Contributing
 - Partial Contributing

Date Created: March 5, 2010
 Projection/Datum: BC Standard Albers, NAD83
 Base Map Scale: 1: 250,000
 Map Document: chilliwack_proposed_owl_wha.mxd
 Created By: South Coast Service Centre, CM

Disclaimer:
 The proposed boundaries present on this map are intended for consultation purposes only. Any detailed review should be performed using the original source data.