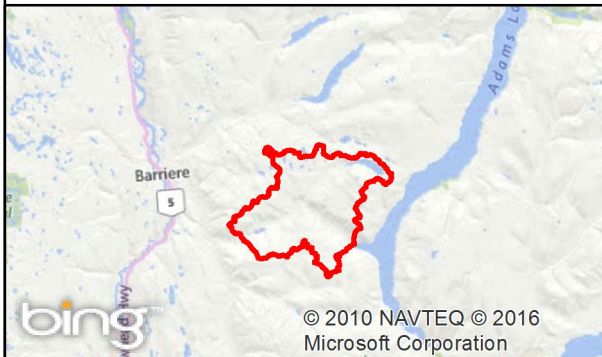


# Sinmax Creek Fisheries Sensitive Watershed

- Watershed
- Basin
- Sub-basin
- Max 25% ECA
- Wetlands
- Lakes
- Private Land
- Streams
- Contour (200m interval)
- Paved Road
- Gravel Road

1:100,000  
0 1.25 2.5 5  
Kilometres



Ministry of  
Forests, Lands and  
Natural Resource Operations

Last updated: 24/05/2016  
Updated by: mfaruqi