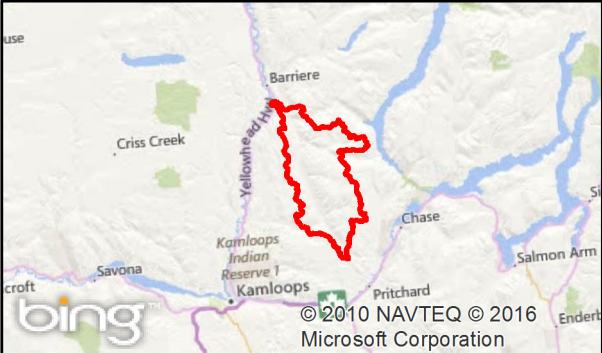
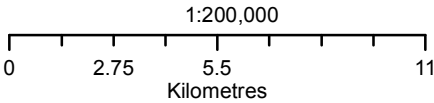


**Louis Creek
Fisheries Sensitive
Watershed**

- Watershed
- Basin
- Sub-basin
- Max 25% ECA
- Wetlands
- Lakes
- Private Land
- Streams
- Contour (200m interval)
- Paved Road
- Gravel Road



Ministry of
Forests, Lands and
Natural Resource Operations

Last updated: 24/05/2016
Updated by: mfaruqi