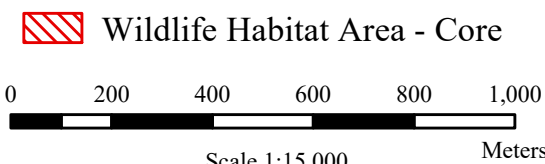


Schedule A Map
South Coast Region (2)
Wildlife Habitat Area - Core
WHA 2 - 680

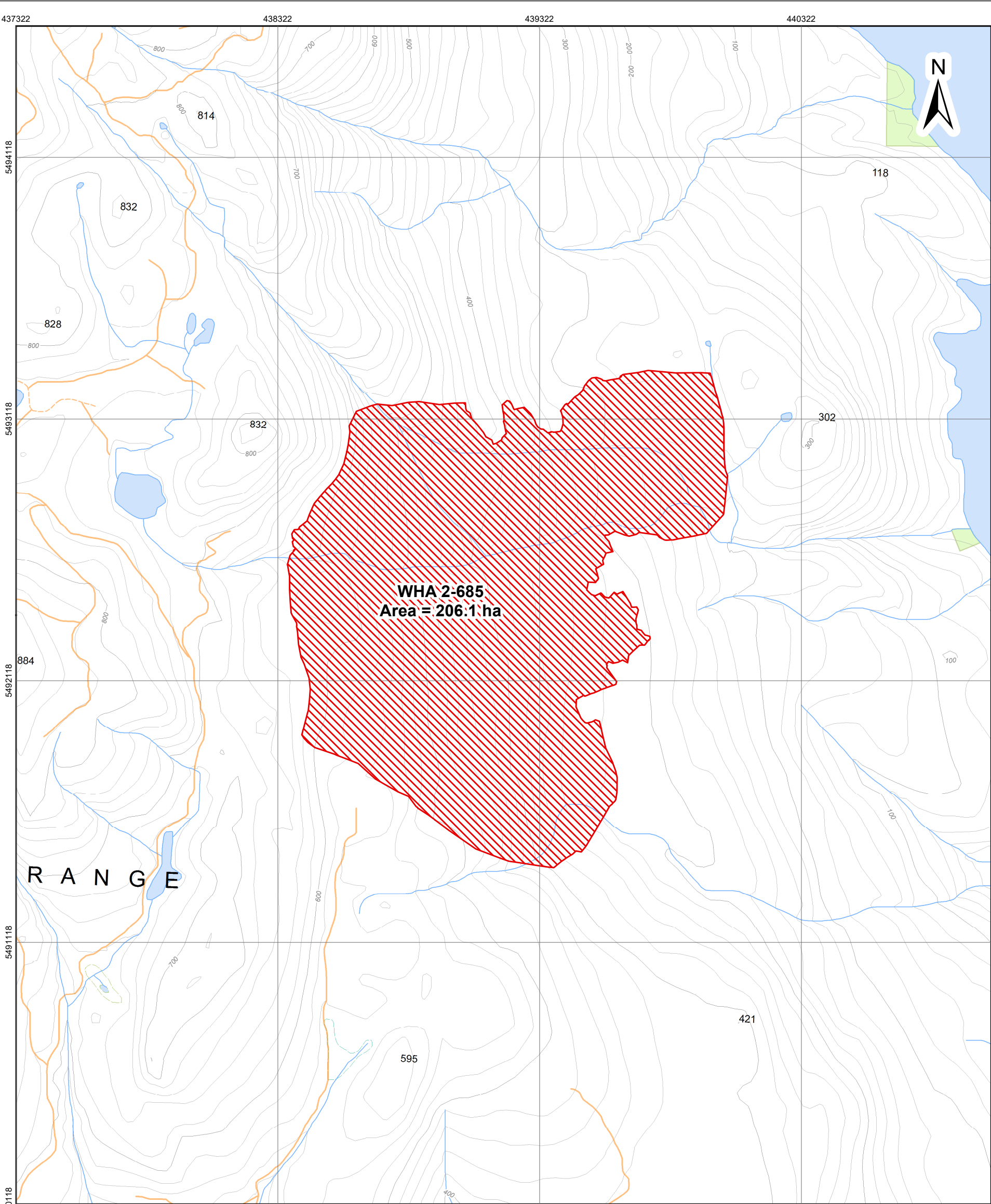


Contour Interval: 20 m
Projection: UTM Zone 10, Datum NAD 83

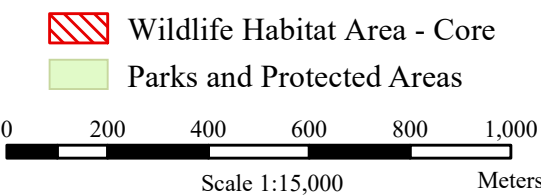


For more information contact:
Strategic Land Use, Coast Area
Land Use Planning and Cumulative
Effects Division
Ministry of Water, Land, and
Resource Stewardship
250-751-7220

Map Produced by
GeoBC and NRS Data Services
Ministry of Water, Land, and
Resource Stewardship
June 5th, 2024



Schedule A Map
South Coast Region (2)
Wildlife Habitat Area - Core
WHA 2 - 685

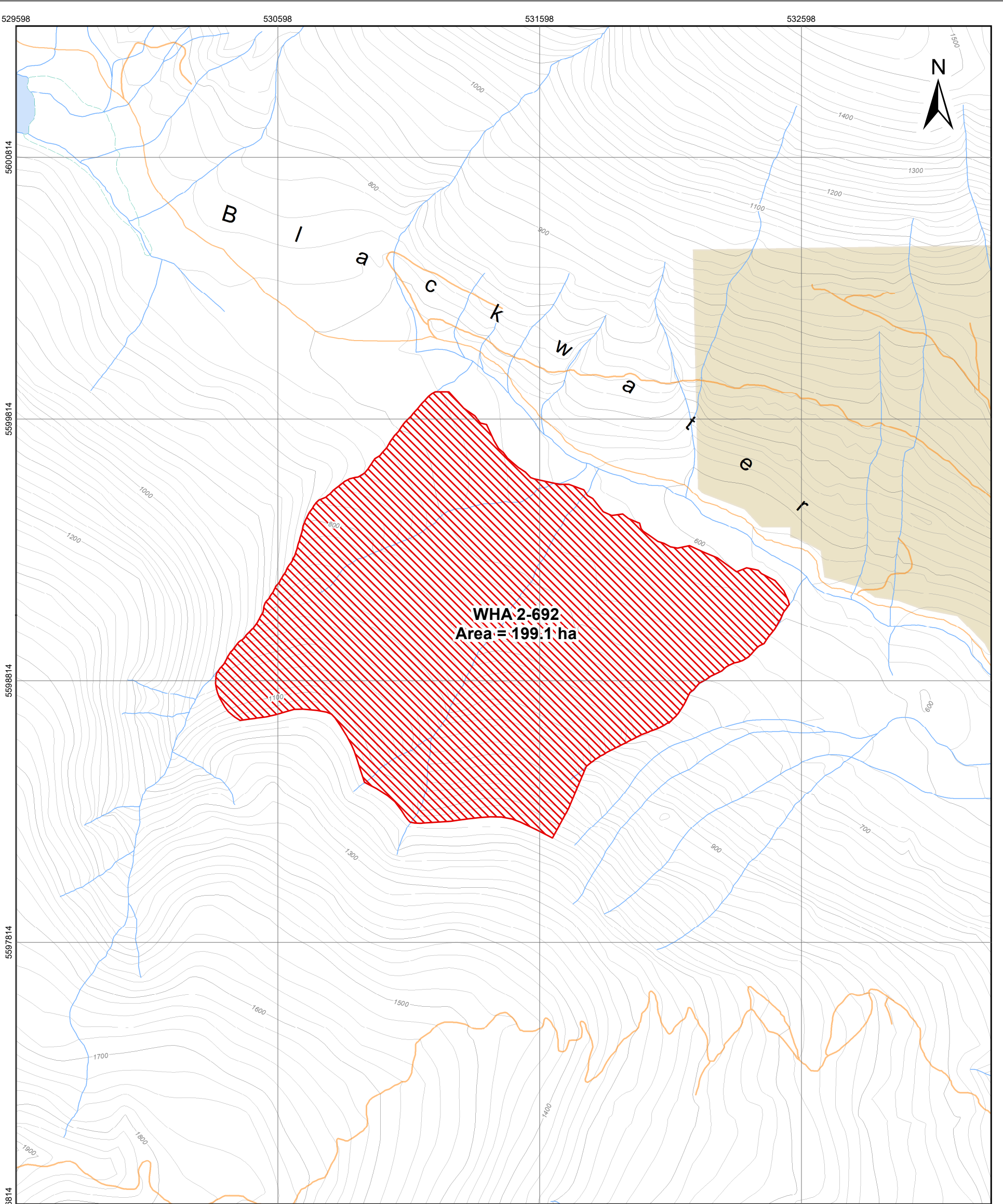


Contour Interval: 20 m
Projection: UTM Zone 10, Datum NAD 83

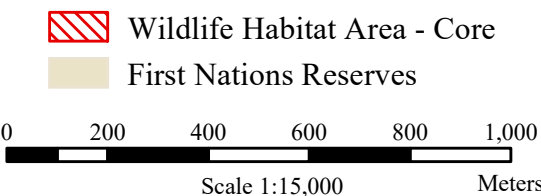


For more information contact:
Strategic Land Use, Coast Area
Land Use Planning and Cumulative
Effects Division
Ministry of Water, Land, and
Resource Stewardship
250-751-7220

Map Produced by
GeoBC and NRS Data Services
Ministry of Water, Land, and
Resource Stewardship
June 5th, 2024



Schedule A Map
South Coast Region (2)
Wildlife Habitat Area - Core
WHA 2 - 692

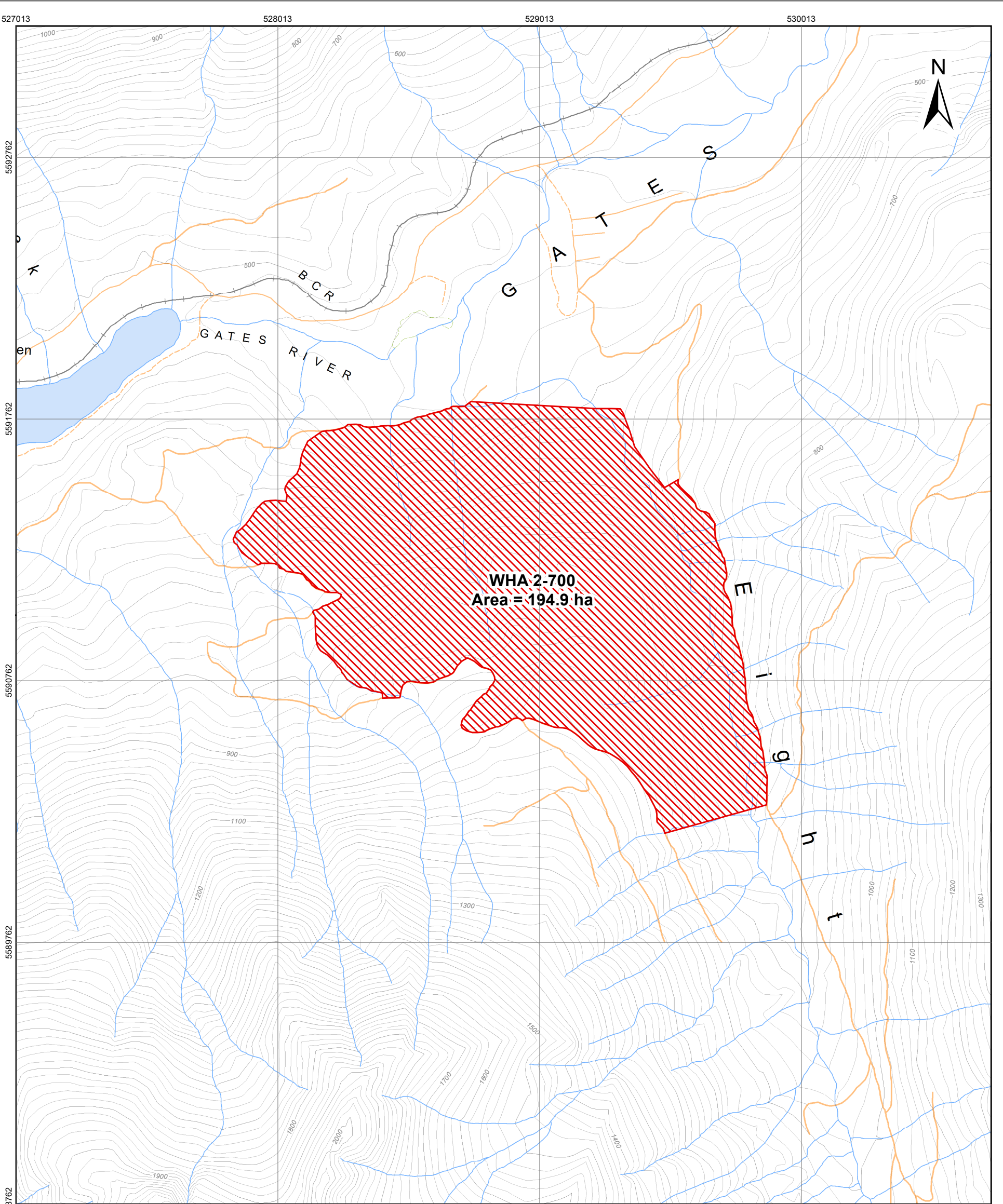


Contour Interval: 20 m
Projection: UTM Zone 10, Datum NAD 83

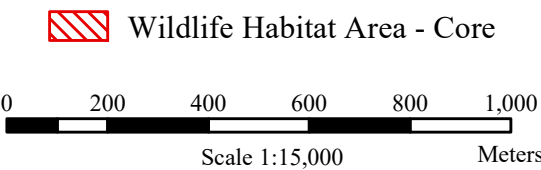


For more information contact:
Strategic Land Use, Coast Area
Land Use Planning and Cumulative
Effects Division
Ministry of Water, Land, and
Resource Stewardship
250-751-7220

Map Produced by
GeoBC and NRS Data Services
Ministry of Water, Land, and
Resource Stewardship
June 5th, 2024

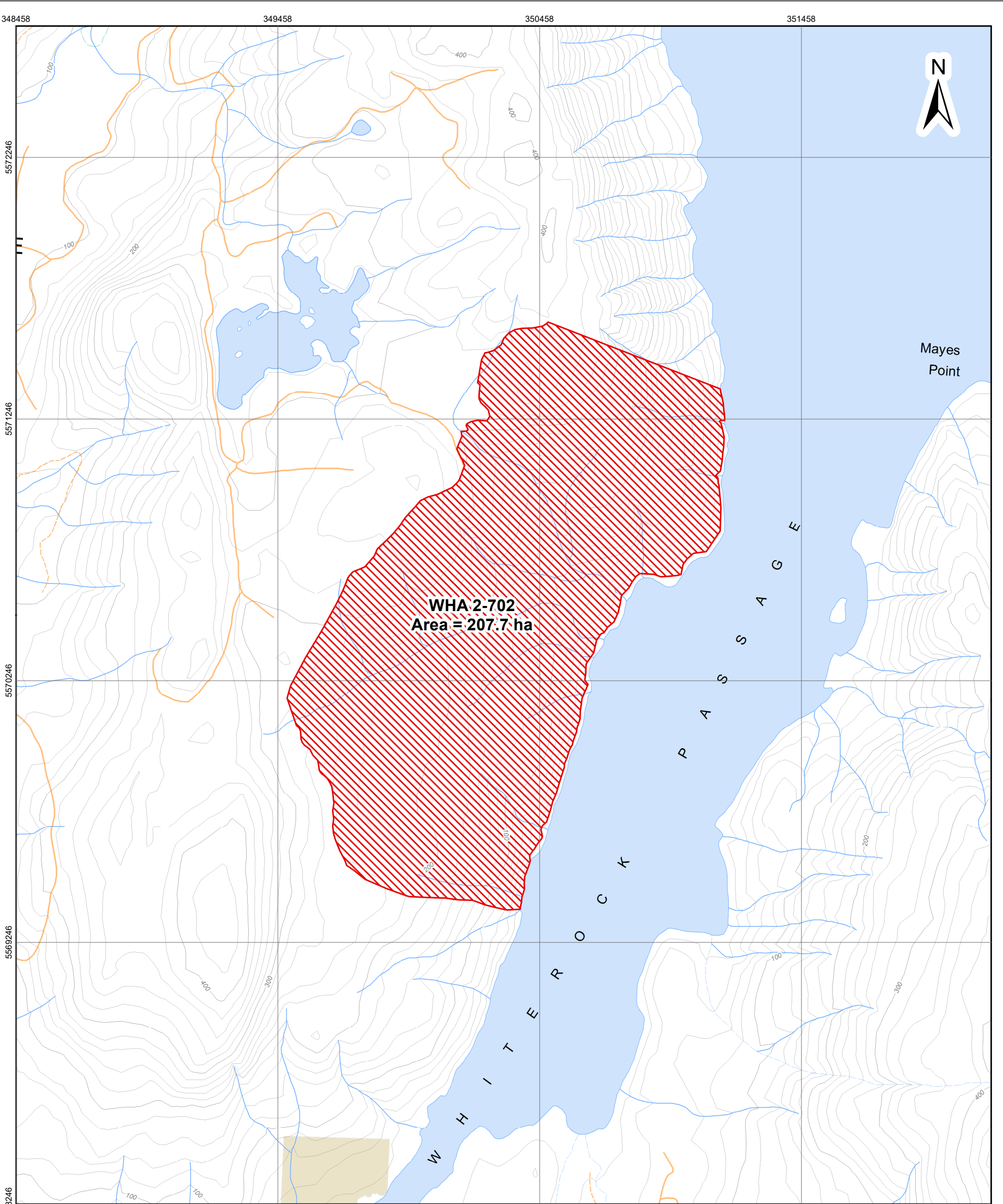


Schedule A Map
South Coast Region (2)
Wildlife Habitat Area - Core
WHA 2 - 700

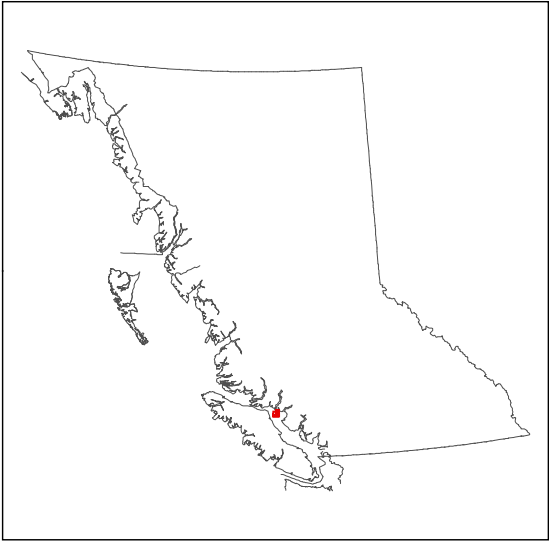
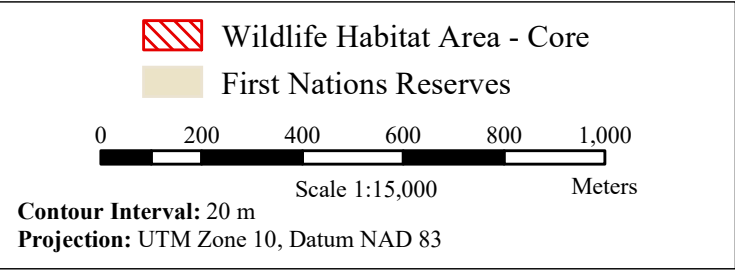


For more information contact:
Strategic Land Use, Coast Area
Land Use Planning and Cumulative
Effects Division
Ministry of Water, Land, and
Resource Stewardship
250-751-7220

Map Produced by
GeoBC and NRS Data Services
Ministry of Water, Land, and
Resource Stewardship
June 5th, 2024

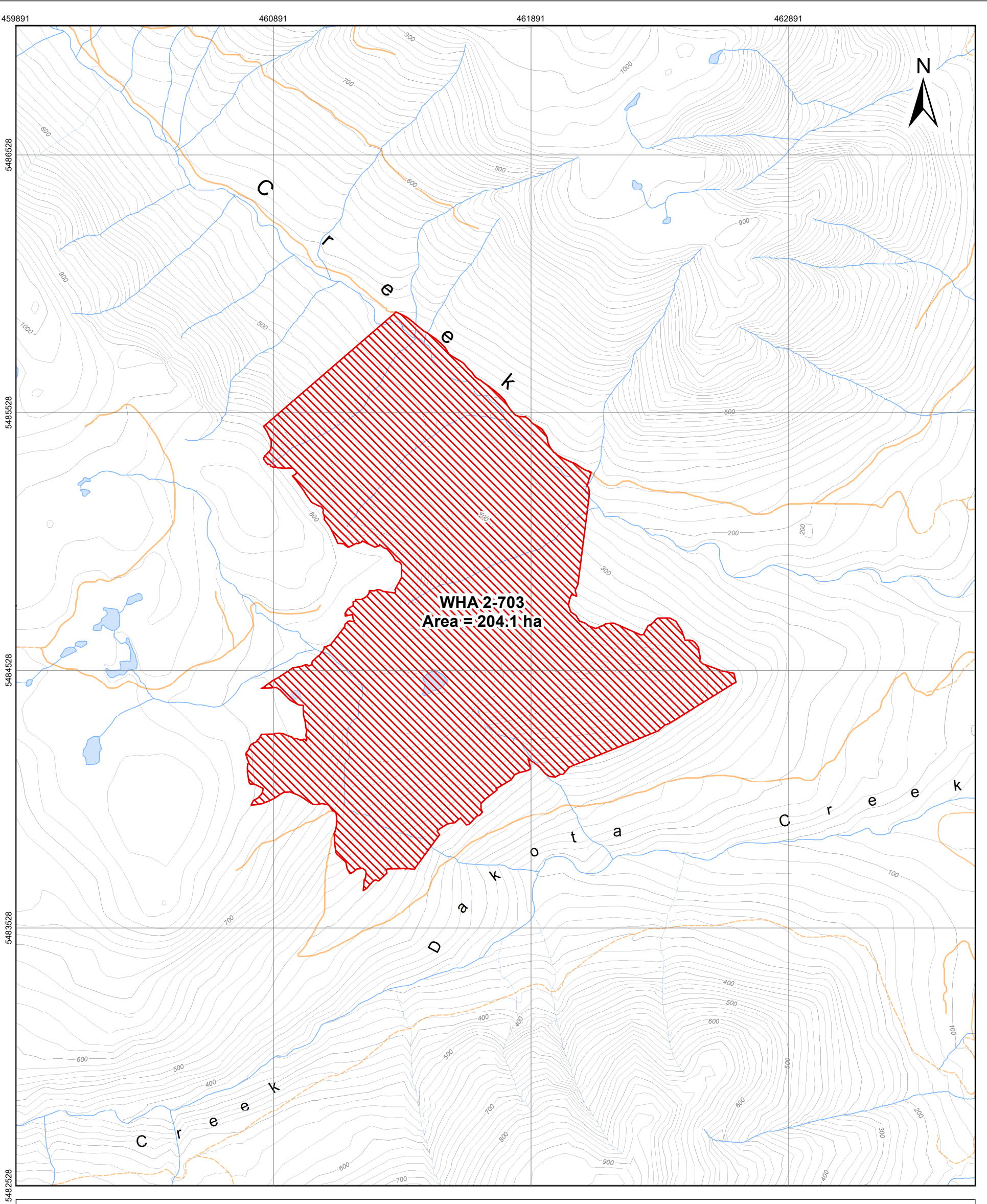


Schedule A Map
South Coast Region (2)
Wildlife Habitat Area - Core
WHA 2 - 702

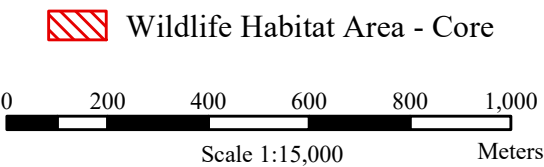


For more information contact:
Strategic Land Use, Coast Area
Land Use Planning and Cumulative
Effects Division
Ministry of Water, Land, and
Resource Stewardship
250-751-7220

Map Produced by
GeoBC and NRS Data Services
Ministry of Water, Land, and
Resource Stewardship
June 5th, 2024



**Schedule A Map
South Coast Region (2)
Wildlife Habitat Area - Core
WHA 2 - 703**

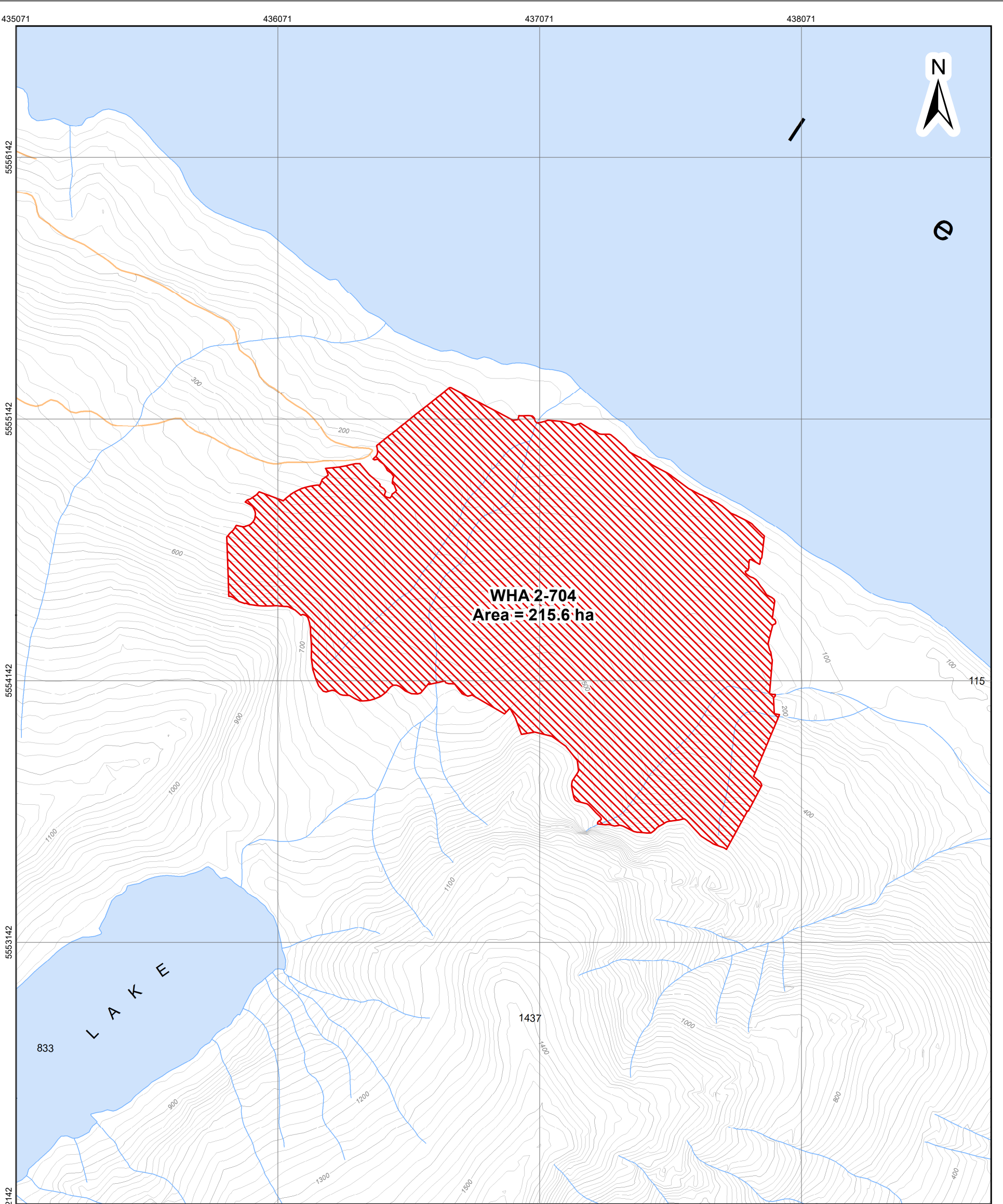


Contour Interval: 20 m
Projection: UTM Zone 10, Datum NAD 83

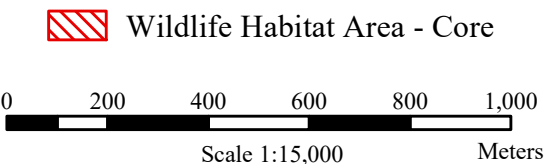


For more information contact:
Strategic Land Use, Coast Area
Land Use Planning and Cumulative
Effects Division
Ministry of Water, Land, and
Resource Stewardship
250-751-7220

Map Produced by
GeoBC and NRS Data Services
Ministry of Water, Land, and
Resource Stewardship
June 5th, 2024



**Schedule A Map
South Coast Region (2)
Wildlife Habitat Area - Core
WHA 2 - 704**

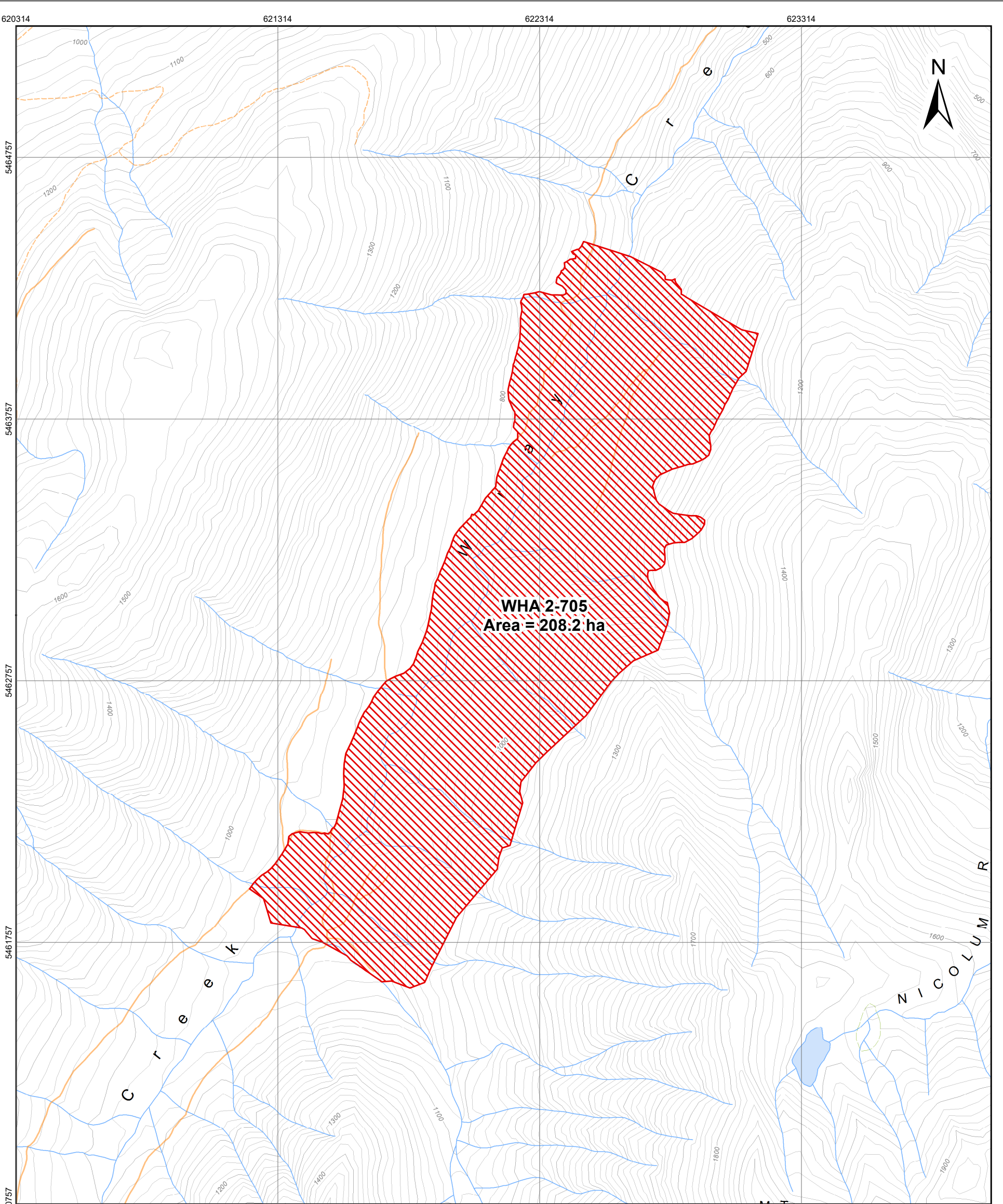


Contour Interval: 20 m
Projection: UTM Zone 10, Datum NAD 83

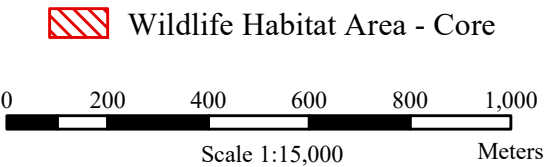


For more information contact:
Strategic Land Use, Coast Area
Land Use Planning and Cumulative
Effects Division
Ministry of Water, Land, and
Resource Stewardship
250-751-7220

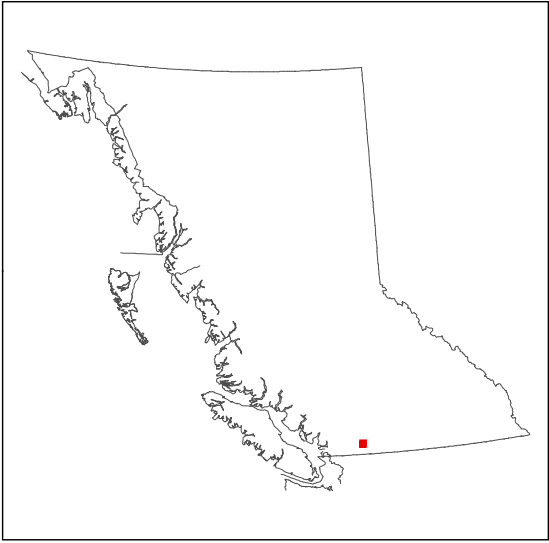
Map Produced by
GeoBC and NRS Data Services
Ministry of Water, Land, and
Resource Stewardship
June 5th, 2024



Schedule A Map
South Coast Region (2)
Wildlife Habitat Area - Core
WHA 2 - 705



Contour Interval: 20 m
Projection: UTM Zone 10, Datum NAD 83



For more information contact:
Strategic Land Use, Coast Area
Land Use Planning and Cumulative
Effects Division
Ministry of Water, Land, and
Resource Stewardship
250-751-7220

Map Produced by
GeoBC and NRS Data Services
Ministry of Water, Land, and
Resource Stewardship
June 5th, 2024