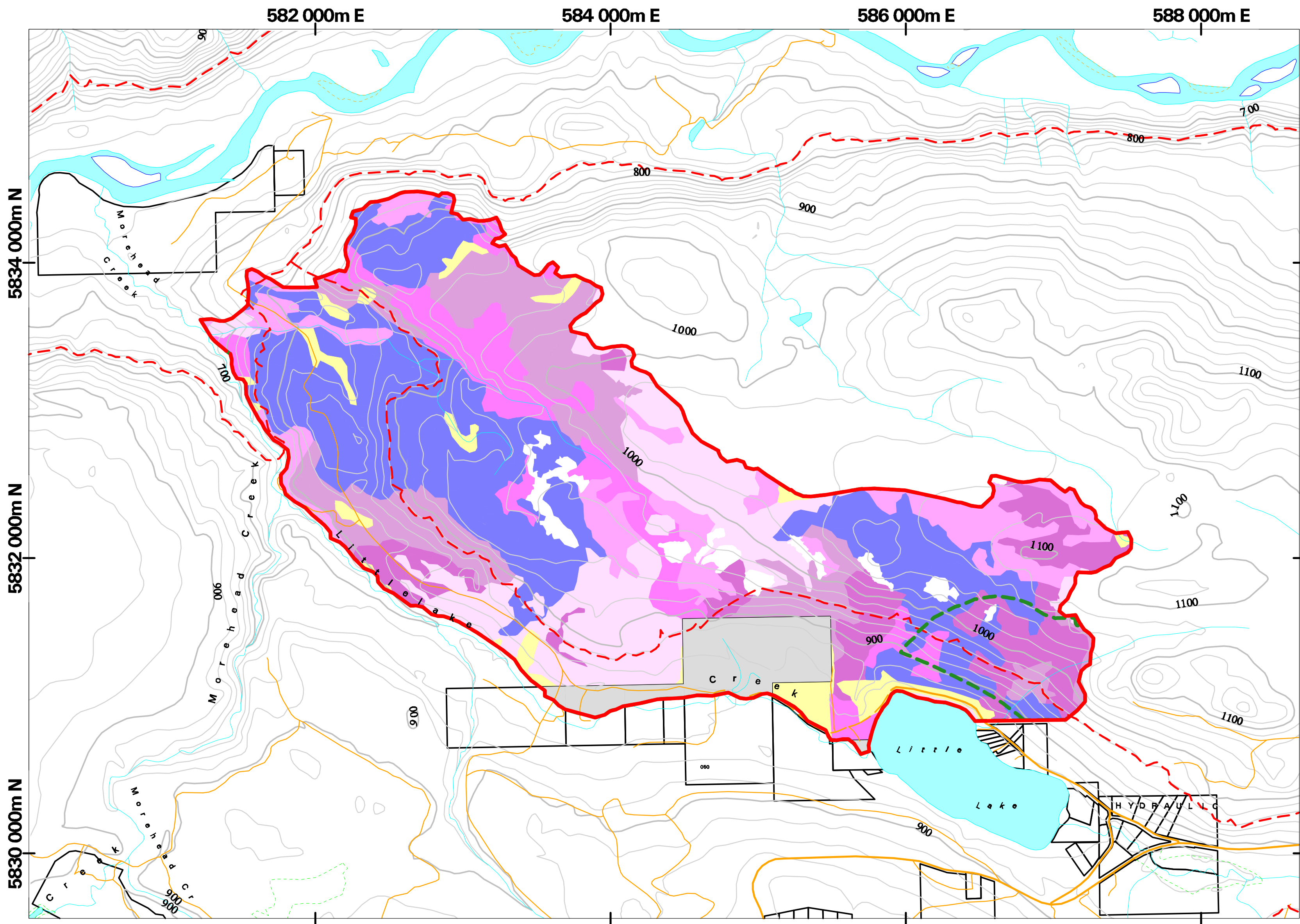


Management Strategy for Mule Deer Winter Ranges in the Cariboo - Chilcotin

# Forest Cover Map Series - Little Lake\_dwl-57

## Map 2 - Douglas Fir in Overstory

February 09, 2006



### LEGEND

- |                          |   |              |
|--------------------------|---|--------------|
| No Fd in Overstory       | No data, or logging disturbance           | Private Land |
| 1 - 19% Fd in Overstory  | Non Forested (from Forest Cover database) |              |
| 20 - 39% Fd in Overstory | Mule Deer Winter Range Boundary           |              |
| 40 - 59% Fd in Overstory | Biogeoclimatic Sub-Zones                  |              |
| 60 - 79% Fd in Overstory | Habitat Management Zones                  |              |
| >= 80% Fd in Overstory   |   |              |