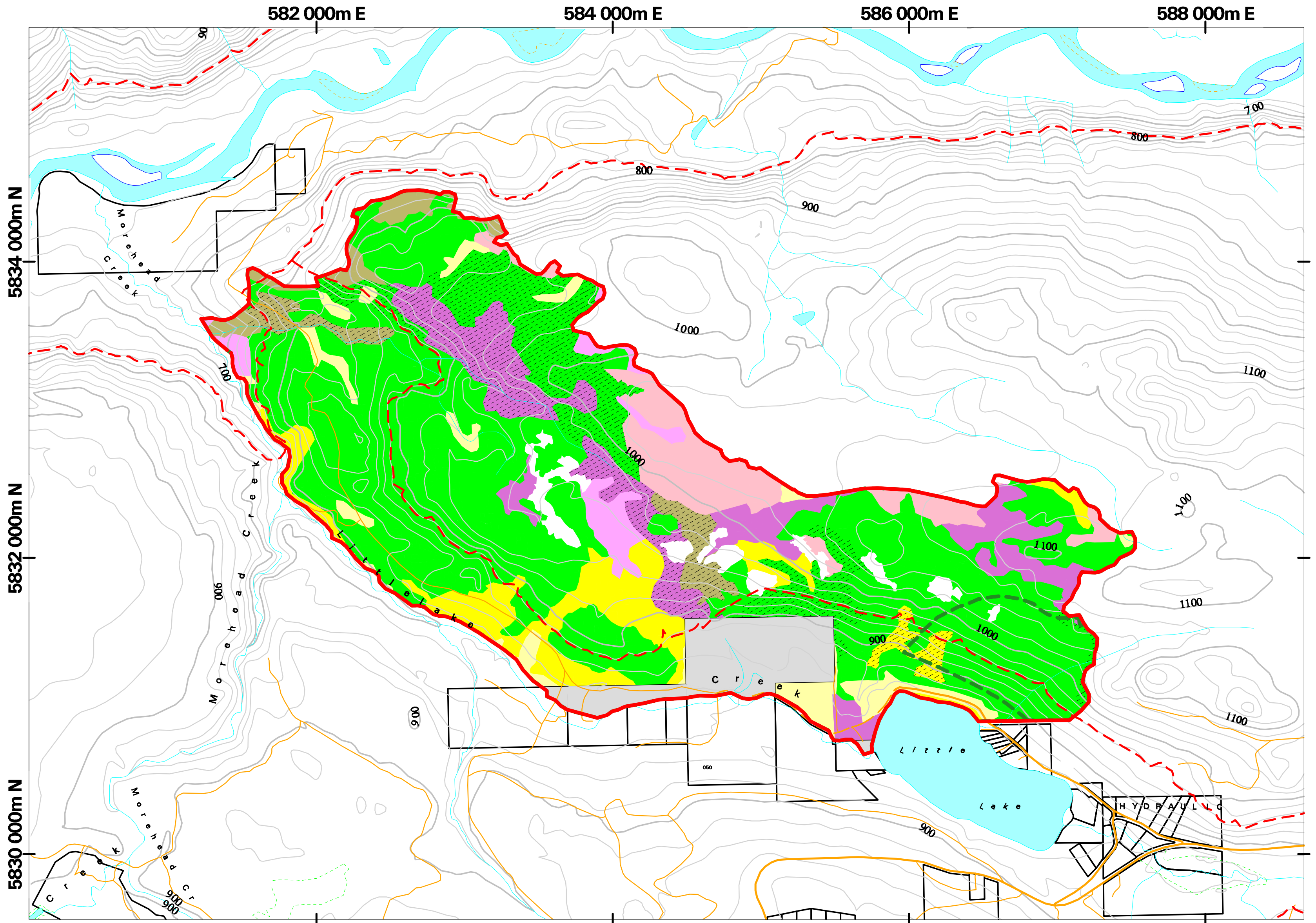


Management Strategy for Mule Deer Winter Ranges in the Cariboo - Chilcotin  
**Forest Cover Map Series - Little Lake\_dwl-57**  
**Map 5 - Leading Species**

February 10, 2006



**LEGEND**

- |                         |                                |   |              |
|-------------------------|--------------------------------|---|--------------|
| Aspen                   | Western Hemlock                | No data, or logging disturbance           | Private Land |
| Cottonwood              | Rocky Mtn. Juniper             | Non Forested (from Forest Cover database) |              |
| Birch                   | Ponderosa Pine                 | Mule Deer Winter Range Boundary           |              |
| Balsam (Fir Abies spp.) | Lodgepole Pine                 | Biogeoclimatic Sub-Zones                  |              |
| Western Red Cedar       | Spruce                         | Habitat Management Zones                  |              |
| Douglas Fir             | Leading species < 50% of stand |   |              |

