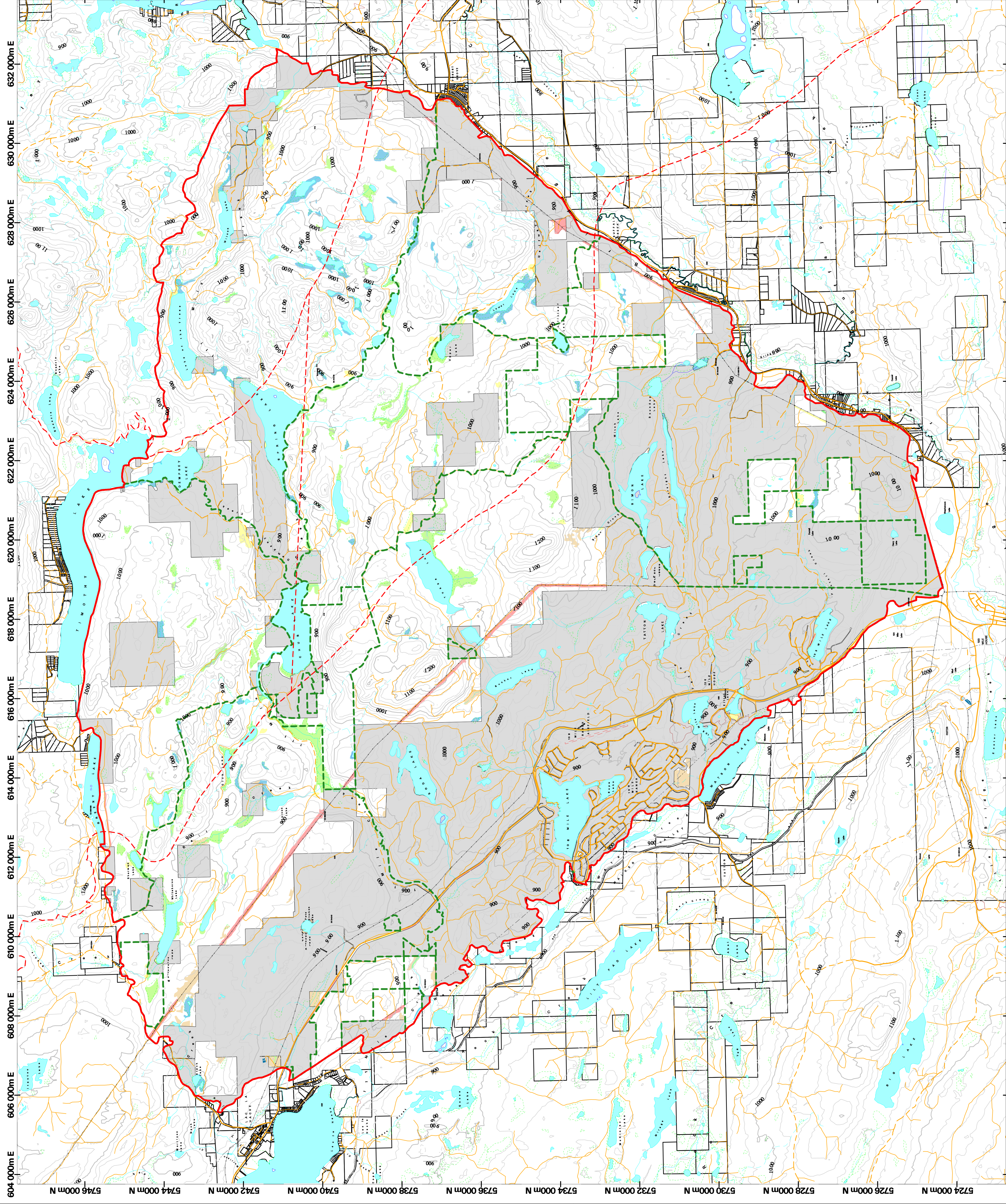


Forest Cover Map Series - 111 Mile - Forest Grove_dmh-2

Map 6 - Non Forested

February 10, 2006



LEGEND (Forest Cover database)

- | | | | |
|-------------------------|---------------------|---------------------------------|--------------------------|
| Cultivated or Clearing | Clay Bank | Urban or Roads | Habitat Management Zones |
| Open Range | Non Productive | Gravel Pit | Private Land |
| Non Productive Brush | Gravel Bar | Mule Deer Winter Range Boundary | |
| Meadow | Rock | Biogeoclimatic Sub-Zones | |
| Swamp or Wetland | Sand | | |
| Alpine or Alpine Forest | Non Productive Burn | | |