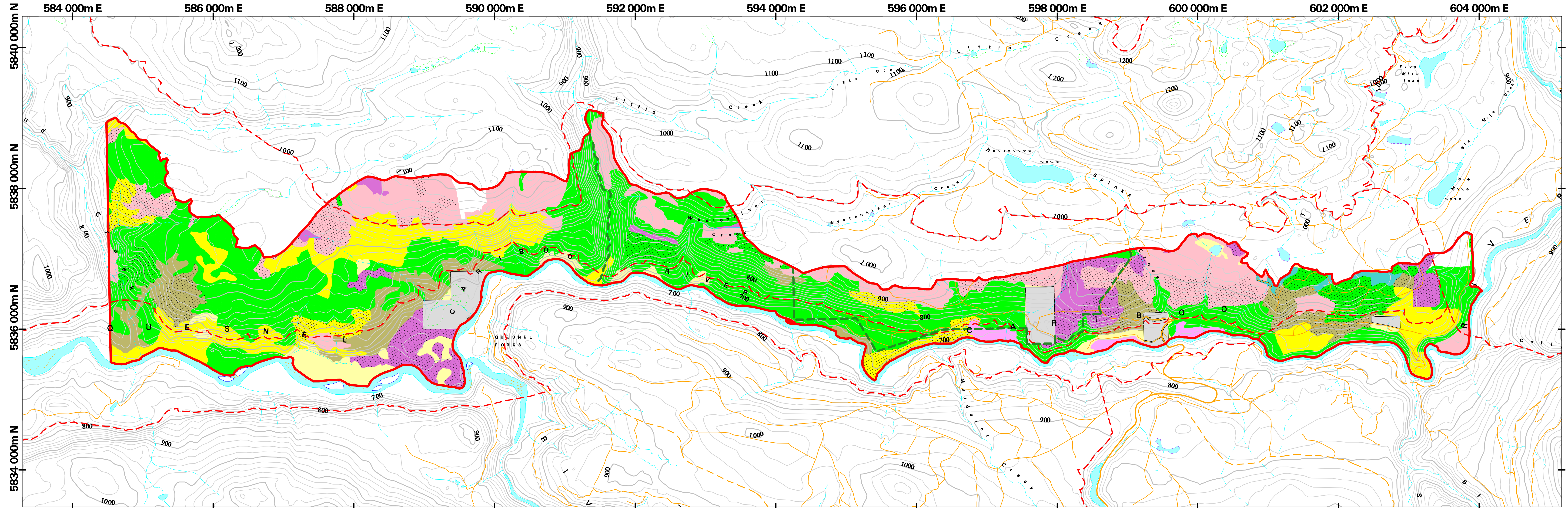


Management Strategy for Mule Deer Winter Ranges in the Cariboo - Chilcotin
Forest Cover Map Series - Quesnel Forks_dwl-70

Map 5 - Leading Species

February 10, 2006



LEGEND

- | | | | |
|-------------------------|--------------------------------|---|--------------|
| Aspen | Western Hemlock | No data, or logging disturbance | Private Land |
| Cottonwood | Rocky Mtn. Juniper | Non Forested (from Forest Cover database) | |
| Birch | Ponderosa Pine | Mule Deer Winter Range Boundary | |
| Balsam (Fir Abies spp.) | Lodgepole Pine | Biogeoclimatic Sub-Zones | |
| Western Red Cedar | Spruce | Habitat Management Zones | |
| Douglas Fir | Leading species < 50% of stand | | |