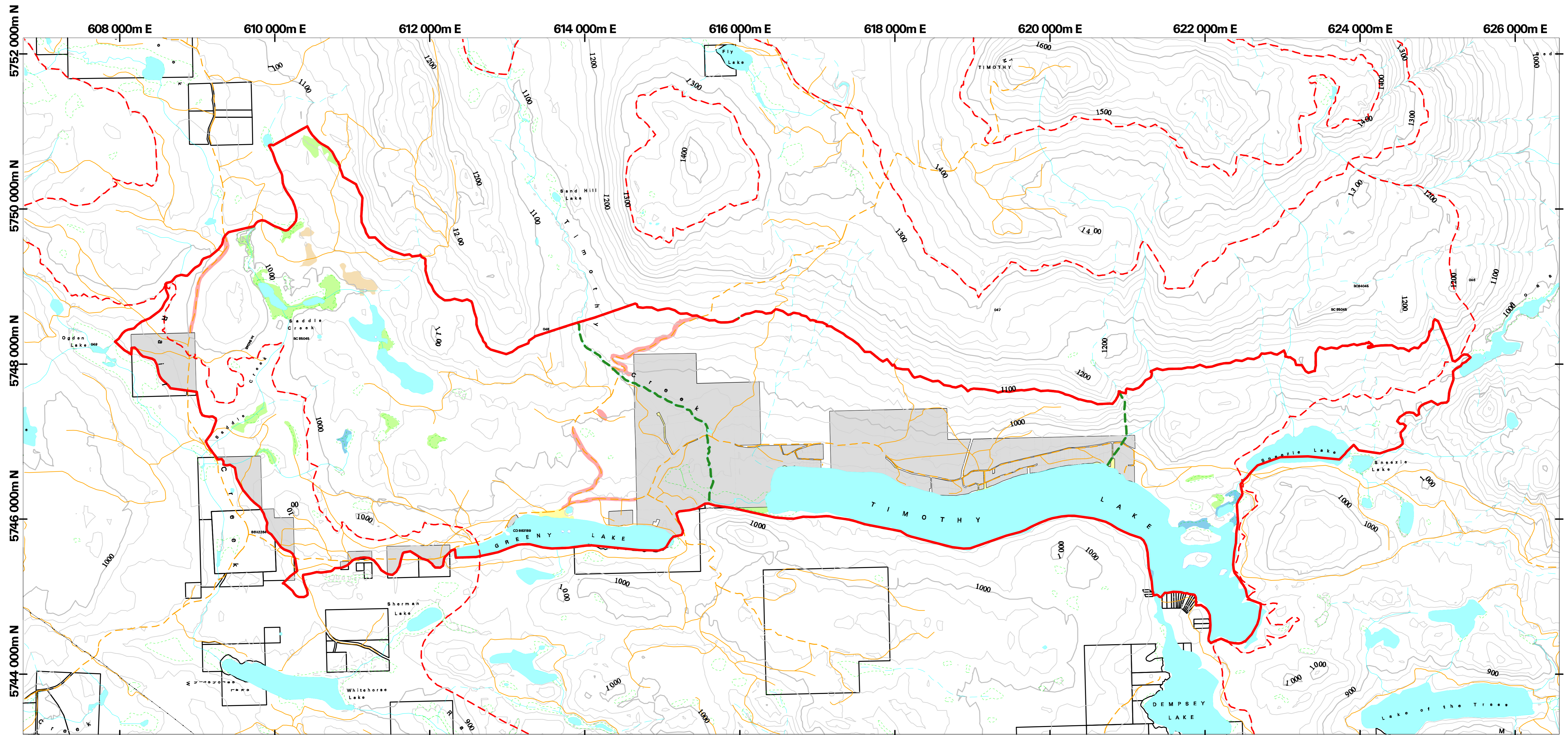


Management Strategy for Mule Deer Winter Ranges in the Cariboo - Chilcotin  
**Forest Cover Map Series - Timothy - Rail\_dmh-79**  
**Map 6 - Non Forested**

February 10, 2006



**LEGEND (Forest Cover database)**

- |                         |                     |                                 |                          |
|-------------------------|---------------------|---------------------------------|--------------------------|
| Cultivated or Clearing  | Clay Bank           | Urban or Roads                  | Habitat Management Zones |
| Open Range              | Non Productive      | Gravel Pit                      | Private Land             |
| Non Productive Brush    | Gravel Bar          |                                 |                          |
| Meadow                  | Rock                | Mule Deer Winter Range Boundary |                          |
| Swamp or Wetland        | Sand                | Biogeoclimatic Sub-Zones        |                          |
| Alpine or Alpine Forest | Non Productive Burn |                                 |                          |