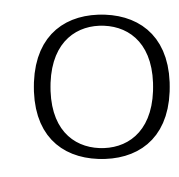


Mule Deer Winter Ranges in the Williams Lake Timber Supply Area: Overview Map 1 of Stand Structure Habitat Classes



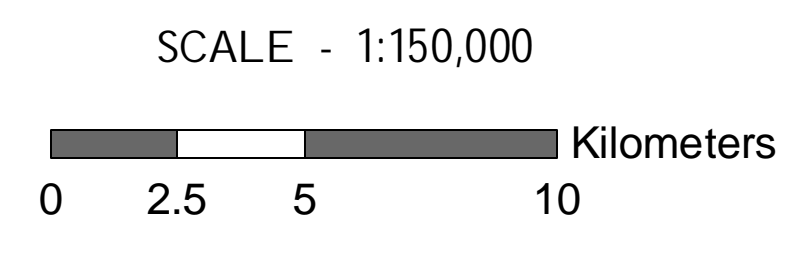
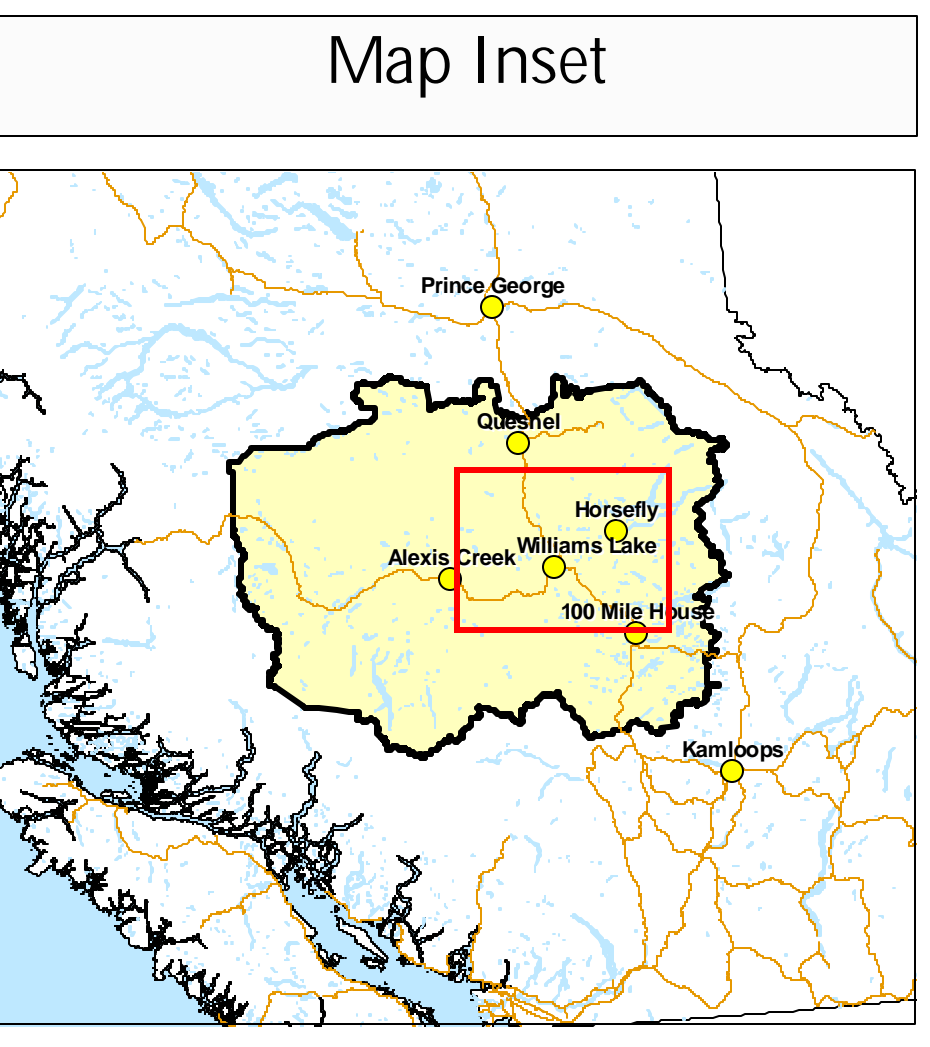
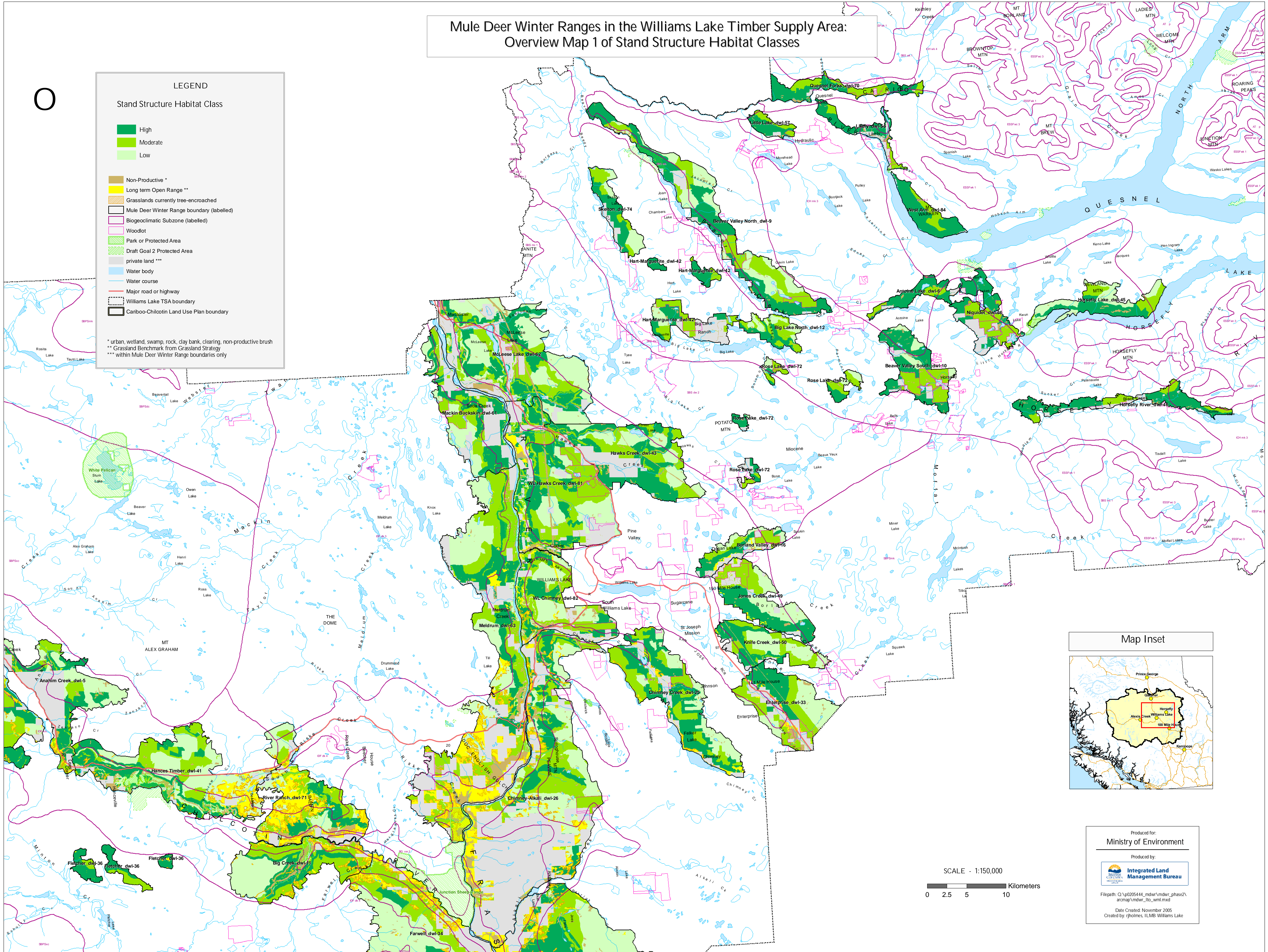
LEGEND

Stand Structure Habitat Class

- High
- Moderate
- Low

- Non-Productive *
- Long term Open Range **
- Grasslands currently tree-encroached
- Mule Deer Winter Range boundary (labelled)
- Biogeoclimatic Subzone (labelled)
- Woodlot
- Park or Protected Area
- Draft Goal 2 Protected Area
- private land ***
- Water body
- Water course
- Major road or highway
- Williams Lake TSA boundary
- Cariboo-Chilcotin Land Use Plan boundary

* urban, wetland, swamp, rock, clay bank, clearing, non-productive brush
 ** Grassland Benchmark from Grassland Strategy
 *** within Mule Deer Winter Range boundaries only



Produced for:
Ministry of Environment

Produced by:
Integrated Land Management Bureau

Filepath: Q:\p020544_mdwr\mdwr_phase2\arcmap\mdwr_1to_vml.mxd
 Date Created: November 2005
 Created by: rholmes, ILMB Williams Lake