

Mule Deer Winter Ranges in the 100 Mile House Timber Supply Area

November 2005

LEGEND

Mule Deer Winter Ranges (labelled)

Vegetation Cover

- Forest
- Grassland or Meadow
- Rock, Clay Bank or Non-Productive Forest
- Riparian Brush or Wetland
- Alpine or Alpine Forest
- All other areas (includes cultivated, urban, industrial, roads, no typing, etc)

Park or Protected Area (labelled)

Draft Goal 2 Protected Area

Non Provincial Crown Land (private land, Indian Reserve and other federal land, municipality)

Major water body

Water course

100m contour (1000m index labelled)

Major road or highway

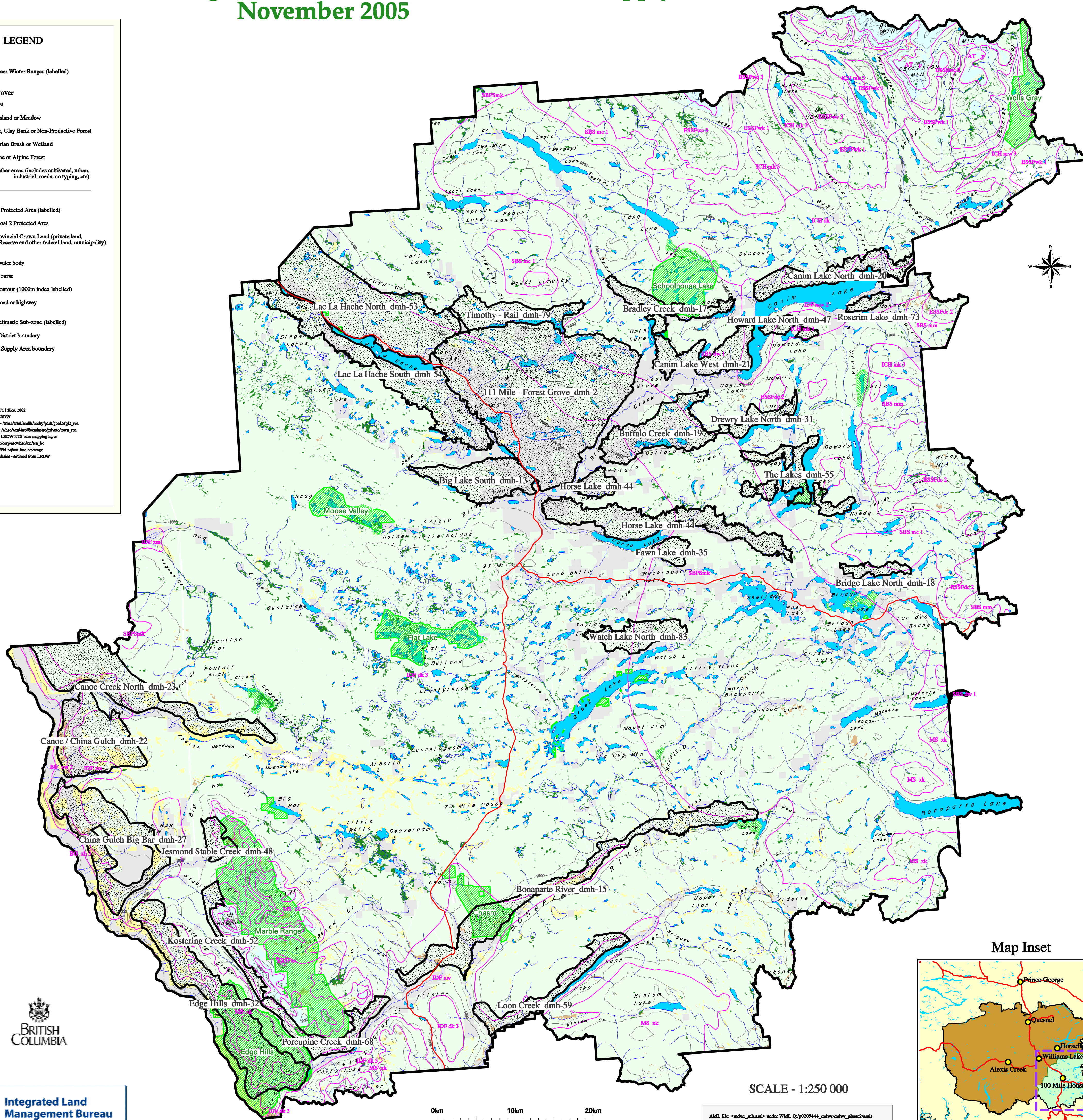
Biogeoclimatic Sub-zone (labelled)

Forest District boundary

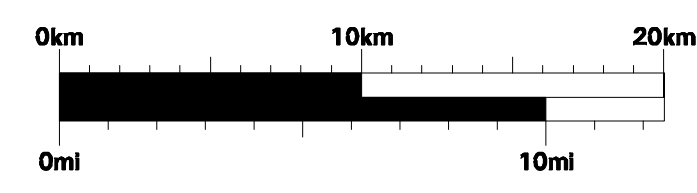
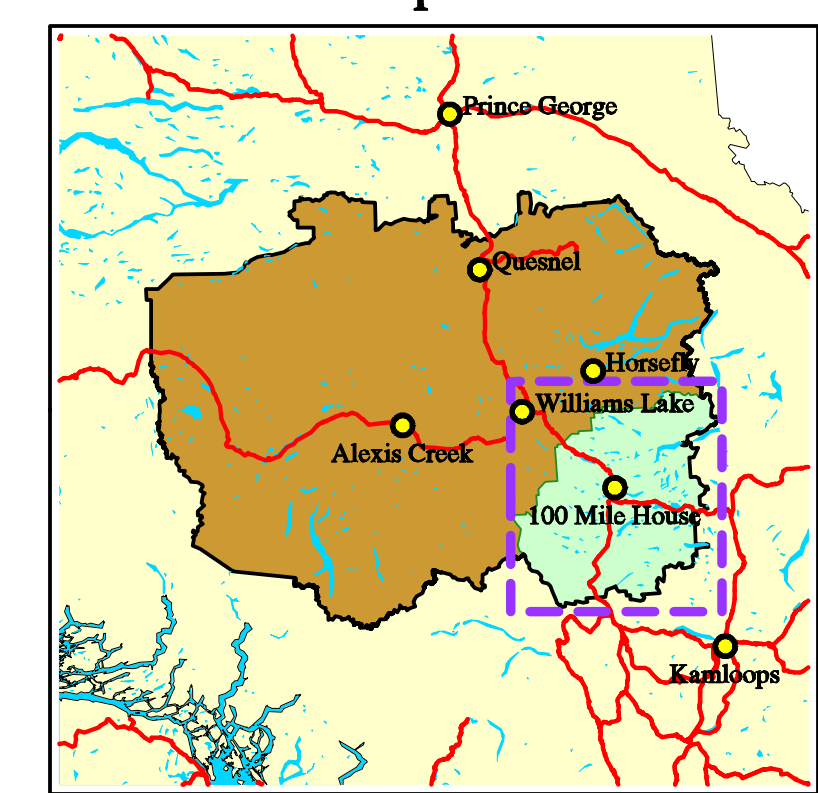
Timber Supply Area boundary

DATA SOURCES

Vegetation Cover - based on FCI files, 2002
 Parks and Protected Areas - LRDW
 Draft Goal 2 Protected Areas - /wbas/wms/wms/land/100mile/100mile_rn
 Non Provincial Crown Land - /wbas/wms/wms/land/100mile/100mile_rn
 Water features and contours - LRDW NTS base mapping layer
 Major roads/highways - /wbas/ocp/ocp/was/was_ho
 Biogeoclimatic Sub-zones - 1995 - /ocp_ho/coverage
 Forest District and TSA boundaries - sourced from LRDW



Map Inset



SCALE - 1:250 000

AML file: <ndw_mh.aml> under WML Q:/p0205444_ndw/ndw_phase2/aml
 Plot file: <ndw_mh.hp> under WML Q:/p0205444_ndw/ndw_phase2/plots
 Production: Nov 05 by RJHolmes, Integrated Land Management Bureau, Williams Lake