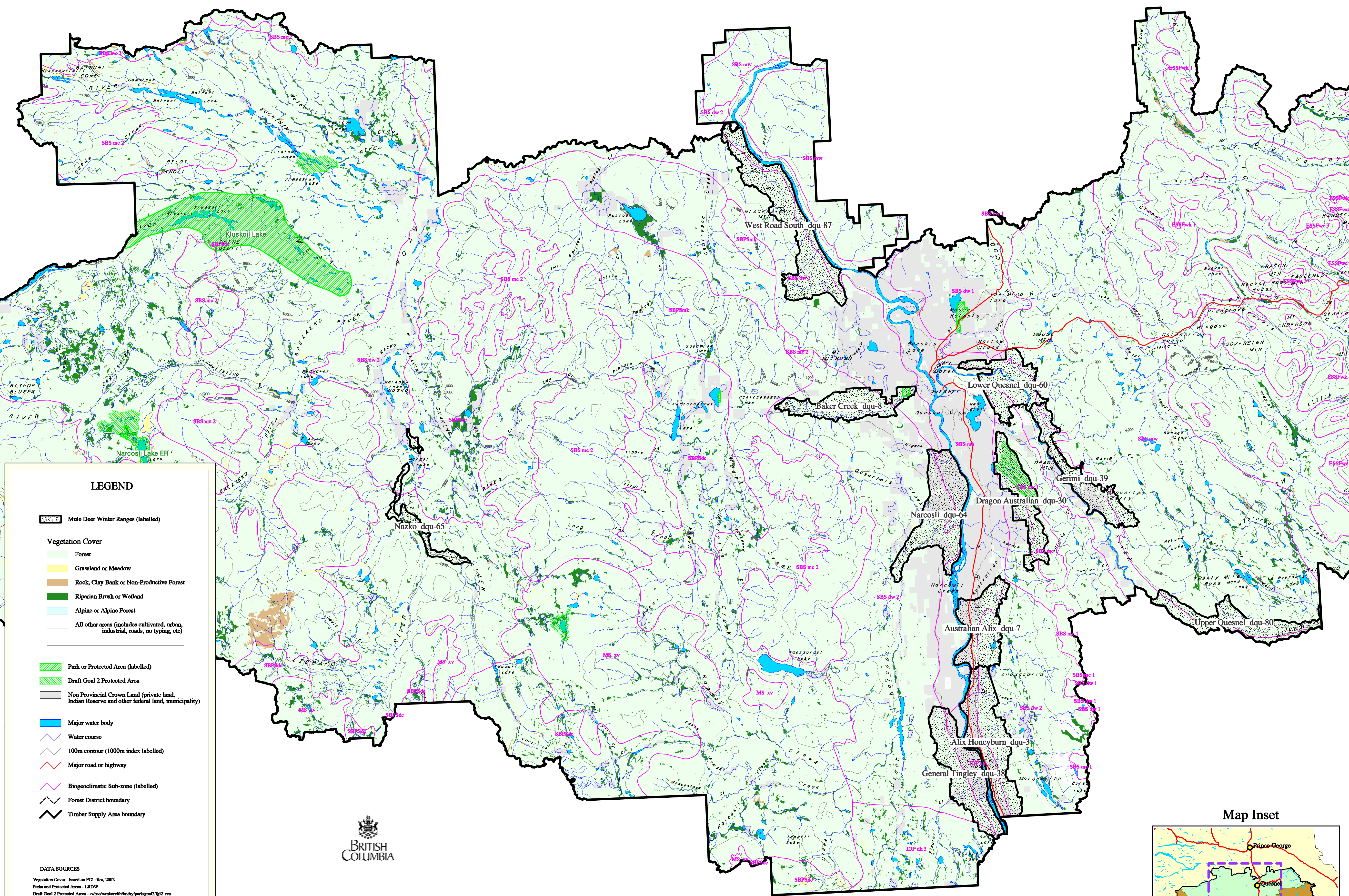
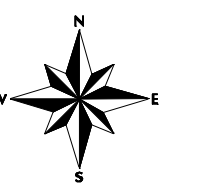


Mule Deer Winter Ranges in the Quesnel Timber Supply Area November 2005

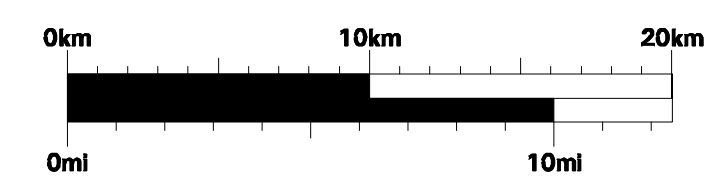


LEGEND

- Mule Deer Winter Ranges (labelled)
- Vegetation Cover**
 - Forest
 - Grassland or Meadow
 - Rock, Clay Bank or Non-Productive Forest
 - Riparian Brush or Wetland
 - Alpine or Alpine Forest
 - All other areas (includes cultivated, urban, industrial, roads, no typing, etc)
- Park or Protected Area (labelled)**
 - Draft Goal 2 Protected Area
 - Non Provincial Crown Land (private land, Indian Reserve and other federal land, municipality)
- Major water body
- Water course
- 100m contour (1000m index labelled)
- Major road or highway
- Biogeoclimatic Sub-zone (labelled)
- Forest District boundary
- Timber Supply Area boundary

DATA SOURCES

Vegetation Cover - based on FC1 files, 2002
 Parks and Protected Areas - LRDW
 Draft Goal 2 Protected Areas - /wba/wal/wal/scr/ib/ndy/park/goal2/fg12_rca
 Non Provincial Crown Land - /wba/wal/wal/scr/ib/ndy/private/town_rca
 Water features and contours - LRDW NTS base mapping layer
 Major roads/highways - /wba/wal/wal/scr/ib/ndy/roads
 Biogeoclimatic Sub-zones - 1995 -qbcz_bco_coverage
 Forest District and TSA boundaries - sourced from LRDW



SCALE - 1:250 000

AML file: <mdw_qa> under WML Q:\p0205444_mdwr\mdwr_phase2\aml
 Plot file: <mdw_qa> under WML Q:\p0205444_mdwr\mdwr_phase2\plots
 Production: Nov 05 by RJHolmes, Integrated Land Management Bureau, Williams Lake

