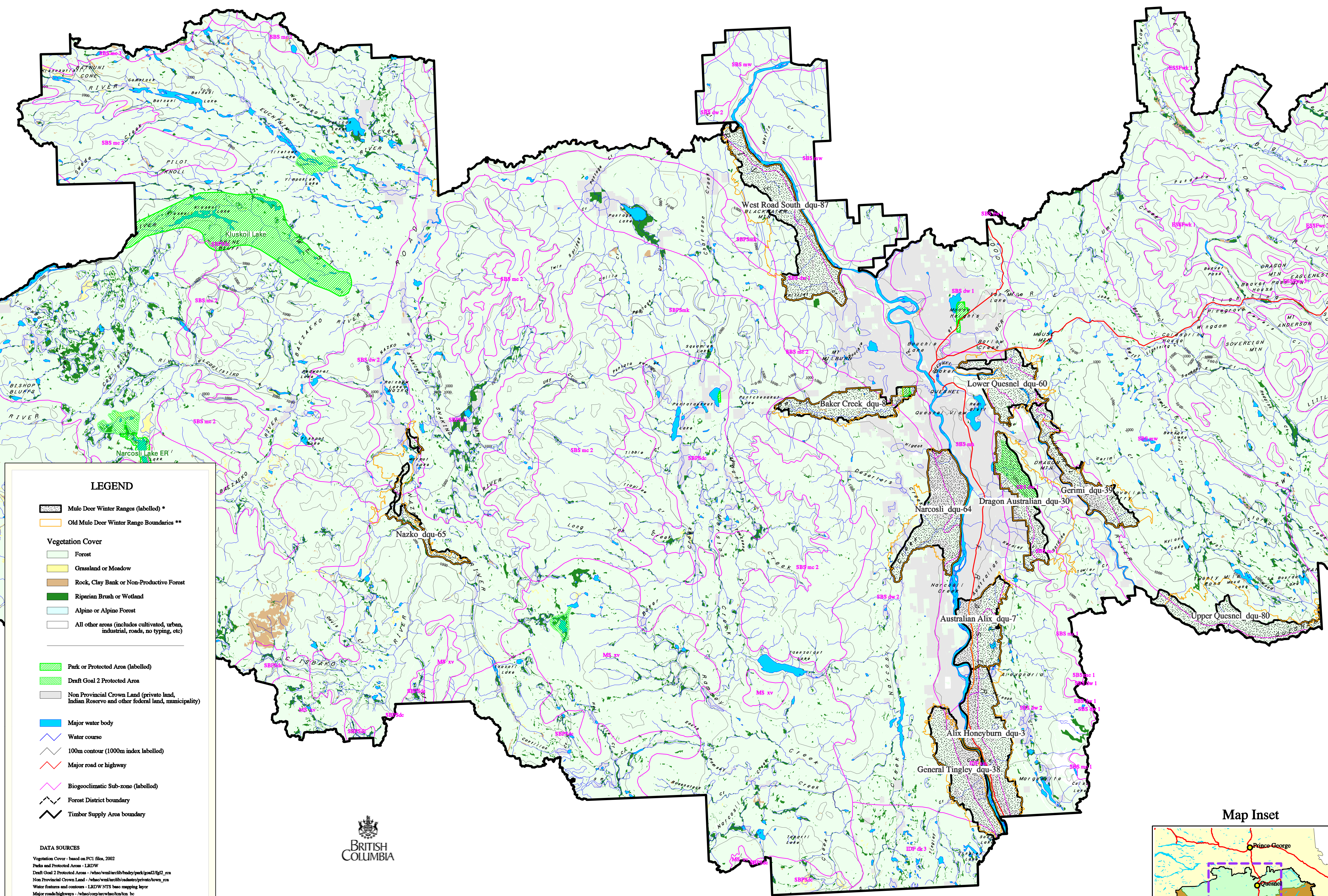
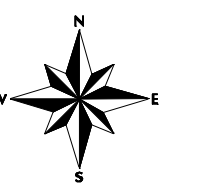


# Mule Deer Winter Ranges in the Quesnel Timber Supply Area: Old and New Boundaries

## November 2005



**LEGEND**

- Mule Deer Winter Ranges (labelled) \*
- Old Mule Deer Winter Range Boundaries \*\*

**Vegetation Cover**

- Forest
- Grassland or Meadow
- Rock, Clay Bank or Non-Productive Forest
- Riparian Brush or Wetland
- Alpine or Alpine Forest
- All other areas (includes cultivated, urban, industrial, roads, no typing, etc)

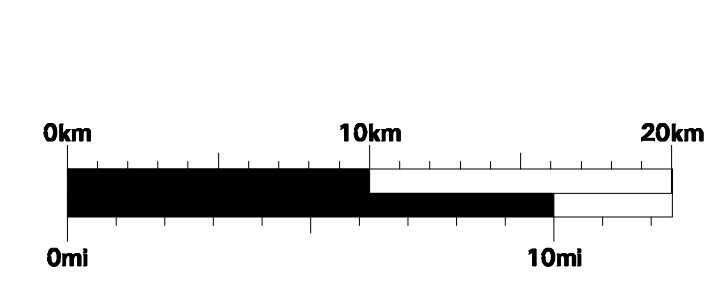
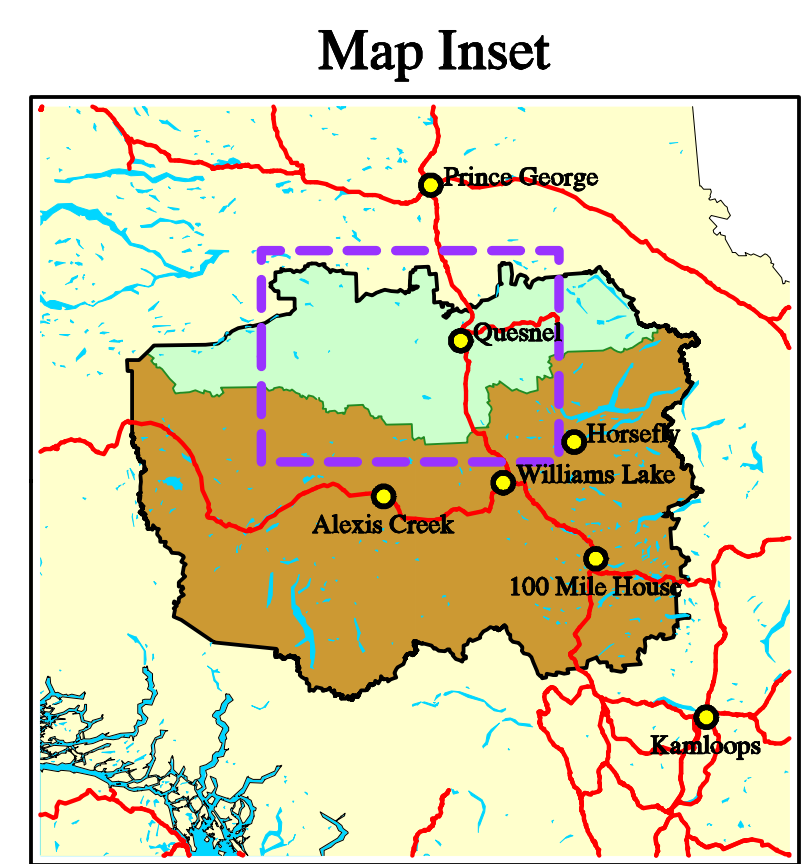
**Other Features**

- Park or Protected Area (labelled)
- Draft Goal 2 Protected Area
- Non Provincial Crown Land (private land, Indian Reserve and other federal land, municipality)
- Major water body
- Water course
- 100m contour (1000m index labelled)
- Major road or highway
- Biogeoclimatic Sub-zone (labelled)
- Forest District boundary
- Timber Supply Area boundary

**DATA SOURCES**

Vegetation Cover - based on PCI files, 2002  
 Parks and Protected Areas - LRDW  
 Draft Goal 2 Protected Areas - /wsl/wsl/mc3/body/park/goal2/fig2\_rca  
 Non Provincial Crown Land - /wsl/wsl/mc3/body/park/goal2/fig2\_rca  
 Water features and contours - LRDW NTS base mapping layer  
 Major roads/highways - /wsl/corp/cw/whc/hcn/bc  
 Biogeoclimatic Sub-zones - 1995 -qhbc\_bco coverage  
 Forest District and TSA boundaries - LRDW

\* Boundaries designated December 2004 under FR94 Government Actions Regulation  
 \*\* Boundaries from 1986 Mule Deer Winter Range Strategy prepared for the Cariboo-Chilcotin Land Use Plan  
 Old boundaries are labelled only for areas that do not overlap with 2004 Winter Ranges



AML file: <mdw\_qa> under WML Q:\p0205444\_mdwr\mdwr\_phase2\aml  
 Plot file: <mdw\_qa> under WML Q:\p0205444\_mdwr\mdwr\_phase2\plots  
 Production: Nov 05 by RJHolmes, Integrated Land Management Bureau, Williams Lake