

# **GRIZZLY BEAR POPULATION DENSITY AND DISTRIBUTION IN THE SOUTHERN COAST RANGES OF BRITISH COLUMBIA**

Annual Progress & Data Summary Report

Year 1

2004/2005

Prepared by:

Clayton Apps, RPBio

&

Bryce Bateman

With financial support from:

Habitat Conservation Trust Fund

Bridge Coastal Restoration Program

Forest Investment Account

Ledcor Power

In collaboration with:

Tony Hamilton, Ministry of Water, Land and Air Protection

Steve Rochetta, Ministry of Water, Land and Air Protection

Bruce McLellan, Ministry of Forests

David Paetkau, Wildlife Genetics International

Wayne Wall, International Forest Products

Kelly Boychuck, Ledcor Power

Lillooet Grizzly Bear Working Group

March, 2005

---

ASPEN WILDLIFE RESEARCH INC.

2708 COCHRANE ROAD NW • CALGARY, AB • T2M 4H9 • CANADA

403.270.8663 • CLAYTON.APPS@TELUS.NET

### Recommended Citation:

Apps, C., and B. Bateman. 2005. Grizzly bear population density and distribution in the southern Coast Ranges: Year 1 progress and data summary. Aspen Wildlife Research and Ministry of Water, Land and Air Protection, Victoria, British Columbia.

### **ACRONYMS & ABBREVIATIONS USED**

BCRP	BC Hydro – Bridge Coastal Fish and Wildlife Restoration Program
FIA	Forest Investment Account
GBPU	Grizzly Bear Population Unit
HCTF	Habitat Conservation Trust Fund
IER	Integrated Ecological Research
Interfor	International Forest Products Ltd.
Ledcor	Ledcor Power Inc.
LGBWG	Lillooet Grizzly Bear Working Group
LRMP	Land and Resource Management Plan
MOF	Ministry of Forests
TSA	Timber Supply Area
WGI	Wildlife Genetics International
WLAP	Ministry of Water, Land and Air Protection

### **ACKNOWLEDGEMENTS**

This project is a cooperative research effort among several partners. The success of our year 1 (2004) sampling was the result of contributions and commitments from a number of organizations and individuals. Funding was provided by the Habitat Conservation Trust Fund (HCTF; including both regular and “court award” funding components), and the BC Hydro Bridge Coastal Fish and Wildlife Restoration Program (BCRP). The Forest Investment Account (FIA) provided funding through the Soo and Sunshine Coast TSAs and TFL 38, and was administered by International Forest Products (Interfor). This report also covers work conducted during the fall season and related genetic analyses that were funded directly by Ledcor Power. Significant in-kind contributions were provided by the Ministry of Water, Land and Air Protection (WLAP) and the Ministry of Forests (MOF). We are especially grateful for the time and dedication of Tony Hamilton, Steve Rochetta, and Bruce McLellan, and the volunteer efforts of Roni Shapka and Celine McLellan. Thanks to these individuals and also to John Van Hove (WLAP), Wayne Wall (Interfor), and Kelly Boychuck (Ledcor) for their support for this work and assistance in arranging funding. Safe and proficient helicopter services were provided by Blackcomb Helicopters, and we appreciate the courtesy and commitment provided by their staff, including pilots Paul Copeland, Dave Brolin, and Craig Havas among others. Meticulous and timely genetic analyses were conducted by Wildlife Genetics International under the supervision of David Paetkau. Finally, we are grateful to the friendly staff of the WLAP Alice Lake field office and compound for patiently accommodating us, and providing both a base for our field work and storage for our equipment and supplies.

## TABLE OF CONTENTS

PROJECT OVERVIEW.....	4
INTRODUCTION .....	4
Issue.....	4
Objectives.....	5
Localized Objectives Specific to Ashlu Creek .....	5
STUDY AREA.....	6
Multi-Year Focal Area.....	6
Year 1 (2004) Sampling Area .....	6
METHODS.....	8
Background .....	8
Year 1 (2004) Sampling .....	8
Fall Movements by Grizzly Bears from the Ashlu Drainage to the Squamish River.....	8
Genotyping of Samples .....	9
RESULTS – YEAR-1 PRELIMINARY DATA .....	10
DISCUSSION .....	18
Spring/Summer Sampling: .....	18
Fall Sampling Near the Ashlu/Squamish Confluence:.....	18
RECOMMENDATIONS .....	19
Additional Sampling within the Ashlu Drainage.....	19
Planned Spatial Analyses.....	19
Population Density .....	20
Coordination with other Studies .....	20
LITERATURE CITED.....	25

## LIST OF TABLES

Table 1. Visits of individual grizzly bears to hair-snap DNA stations by sampling cell and session in the Squamish-Lillooet and Toba-Bute grizzly bear population units of southwest British Columbia, June-July, 2004. ....	12
Table 2. Sites, frequency, and results of hair-snap DNA sampling for grizzly bear detection along the lower Squamish River near the mouth of Ashlu Creek, Oct – Nov, 2004.....	14
Table 3. Capture summary by session for identified grizzly bears in the Squamish-Lillooet and Toba-Bute grizzly bear population units of southwest British Columbia .....	15
Table 4. Maximum distance between multiple-detections of individual grizzly bears in the Squamish-Lillooet and Toba-Bute grizzly bear population units of southwest British Columbia, June-July, 2004.....	17

## LIST OF FIGURES

Figure 1. Multi-year focal area for sampling grizzly bear population density and distribution in the southern Coast Ranges of British Columbia. ....	7
Figure 2. Detection of $\geq 1$ black or grizzly bear at hair-snap DNA sampling stations across the Squamish-Lillooet and Toba-Bute (partial) grizzly bear population units of southwestern British Columbia.....	22
Figure 3. Independent detections by grizzly bears at hair-snap DNA sampling stations across the Squamish-Lillooet and Toba-Bute (partial) grizzly bear population units of southwestern British Columbia.....	23
Figure 4. Known identities of grizzly bears detected at hair-snap DNA sampling stations across the Squamish-Lillooet and Toba-Bute (partial) grizzly bear population units of southwestern British Columbia.....	24

## PROJECT OVERVIEW

There is little known of grizzly bear density, distribution, or population connectivity in British Columbia's southern Coast Ranges. This knowledge gap is of concern given the wide range of land resource demands, particularly in and around the Sea to Sky Planning Area where there is potential for excessive cumulative impacts resulting from the area's growing recreational popularity, associated development trends, and its accessibility from the nearby lower mainland. Currently, 4 of the 5 grizzly bear population units (GBPUs) in this region are considered "threatened". Addressing grizzly bear conservation issues such as mortality risk, population connectivity, and reserve allocation requires (1) an understanding of the density and spatial distribution of the regional population, (2) an understanding of the factors that influence this pattern, and (3) a means to integrate this knowledge within local and regional planning. Using established and proven noninvasive hair-snag techniques and DNA analyses, we are systematically sampling grizzly bear occurrence across a 40,000 km<sup>2</sup> area of the BC southern Coast Ranges over a period of 3 – 4 years. Population density will be estimated within defined areas using mark-recapture methods. Over a greater extrapolation area, grizzly bear population density, distribution and connectivity will be empirically modeled relative to landscape factors of habitat and human influence. Results will provide a basis for identifying population core and linkage landscapes, and for understanding the factors that determine them. Given an adequate sample size, we will also evaluate the influence of habitat conditions and human activity on grizzly bear gene flow and population connectivity at broad, landscape scales. This may provide a basis for more appropriate delineation of grizzly bear population units.

Products and information from this study will be provided in a form that can be easily and directly integrated into resource planning exercises, and can provide decision-support for mitigating development impacts. This will benefit not only grizzly bears but many other species that may also be impacted by cumulative human development and the fragmentation of habitat and populations. Without this study, managers and decision makers will be limited to purely subjective "best-guesses" in supporting resource planning decisions and mitigation options. Information from this study is also essential for evaluating the needs and options for grizzly bear recovery within defined GBPUs, and to assess the likelihood that grizzly bear population harvest can eventually be reinstated in some landscapes. Finally, results will help to identify landscapes where more intensive research into grizzly bear movements and/or demographics is appropriate and feasible. Ultimately, this study will help to ensure that the provisions of the provincial Grizzly Bear Conservation Strategy are met in the southern Coast Ranges of BC. This includes grizzly bear objectives specific to both the Lillooet and Sea to Sky LRMPs, as they progress toward government consultation with First Nations and into implementation.

## INTRODUCTION

### Issue

The British Columbia Grizzly Bear Conservation Strategy (MELP 1995) calls for the identification of core population areas, where human activities not compatible with grizzly bear conservation can be controlled, and for the provision of bear movement and genetic interchange among such areas. These considerations are especially important near the southern edge of grizzly bear range where populations are likely to exhibit a source-sink or metapopulation structure (Doak 1995, Craighead and Vyse 1996, Proctor et al. 2002). Most of this southern range lies in BC (McLellan 1998).

The distribution of grizzly bear core habitat and populations may be especially patchy in the southern Coast Ranges of BC given the high diversity of natural conditions and varying types and levels of human activity (Apps and Hamilton 2002). However, despite a wide range of land resource demands, there is little known of grizzly bear density, distribution, or population connectivity in this region. This knowledge gap has been of particular concern in and around the Sea to Sky Planning Area (Squamish Forest District) due to the potential for excessive cumulative impacts resulting from the area's growing recreational popularity, associated development trends (e.g., 2010 Winter Olympics), and its accessibility from the nearby lower mainland. Anecdotal reports suggest considerable variation in bear occurrence and habitat quality, and 4 of the 5 local grizzly bear population units are currently considered "threatened" (current population assumed to be 1-50% of potential; Hamilton et al. 2004). Understanding the spatial distribution of grizzly bears locally and the factors that influence this structure is necessary to address conservation issues such as mortality risk, population connectivity, and reserve allocation.

The maintenance and/or recovery of the local population requires that sound information on the quality, distribution and connectivity of habitat and populations be integrated with local and regional planning. As a first step in addressing this, 2 subjective modeling efforts were completed (Apps 2001, Apps and Hamilton 2002). In both cases, spatial outputs have been associated with considerable uncertainty and have highlighted the need for empirical data to develop refined and defensible predictions.

### Objectives

1. Systematically sample grizzly bear occurrence over a defined study area using hair-snag techniques and DNA analysis for species and individual identification.
2. Apply mark-recapture methods to estimate grizzly bear population density within the survey areas.
3. Empirically model population density, distribution and connectivity relative to landscape factors of habitat and human influence. This will form the basis for (a) identifying population core and linkage landscapes, and (b) understanding the factors that determine them.
4. Given an adequate sample size, evaluate the influence of habitat conditions and human activity on grizzly bear gene flow at broad, landscape scales.

### Localized Objectives Specific to Ashlu Creek

The involvement of Ledcor Power in this study is specifically to elucidate the status, abundance, and distribution of grizzly bears in the region of the company's proposed run-of-river hydroelectric development on Ashlu Creek, a tributary of the lower Squamish River. As described below (see Methods), this objective required ancillary sampling to establish the likelihood that grizzly bears are making movements through the Ashlu drainage and proposed development site to the Squamish River during the late-summer and fall to feed on spawning salmon. Results are expected to contribute to baseline knowledge of seasonal movements by grizzly bears that likely are through the development zone.

## STUDY AREA

### Multi-Year Focal Area

The multi-year focal area for this project encompasses approximately 40,000 km<sup>2</sup> of several major watersheds at the southwestern extent of current grizzly bear range. It is defined by the following grizzly bear population units (GBPUs) that are currently assigned a conservation status of “threatened” (current population = 1 – 50% of potential): Squamish-Lillooet, Garibaldi-Pitt, Stein-Nahatlatch, and the southern half of the South Chilcotin Ranges, as well as the Toba-Bute GBPU that is considered “viable” (Hamilton et al. 2004; Figure 1). These include the Southgate, Toba, Jervis, Squamish, Lillooet, Seton, Cayoosh, Bridge, Stein, Nahatlatch, and Pitt drainages. The overall focal area lies within both the Coast and Mountains Ecoprovince and the Southern Interior Ecoprovince (Demarchi 1996). The wetter, western portion falls within the Pacific Ranges Ecoregion, defining the southernmost ranges of BC’s Coast Mountains; while in the northeastern portion of the study area, the Interior Transition Ranges Ecoregion is characterized by a drier coast-interior transition climate. There is currently no general open season or limited entry hunting for grizzly bears within the greater focal area.

### Year 1 (2004) Sampling Area

Our year 1 (2004) sampling area was a subsection of the above-described multi-year focal area. It was defined according to grizzly bear population unit boundaries and our expectations of increased demographic “closure” to current populations relative to geographic features. It was also constrained by budgetary and logistical considerations within the context of what we determined to be a minimum sampling intensity and duration (see Methods, below). We ensured that this sampling area extended well into landscapes currently assumed to be unoccupied by grizzly bears (Hamilton et al. 2004). We made this choice in light of our objective to better understand and model population distribution, and considering the highly generalized and anecdotal nature of the “occupied line”. Thus, the year 1 (2004) sampling area was 9,600 km<sup>2</sup> and encompassed all of the Squamish-Lillooet and part of the Toba-Bute GBPUs (Figure 1).



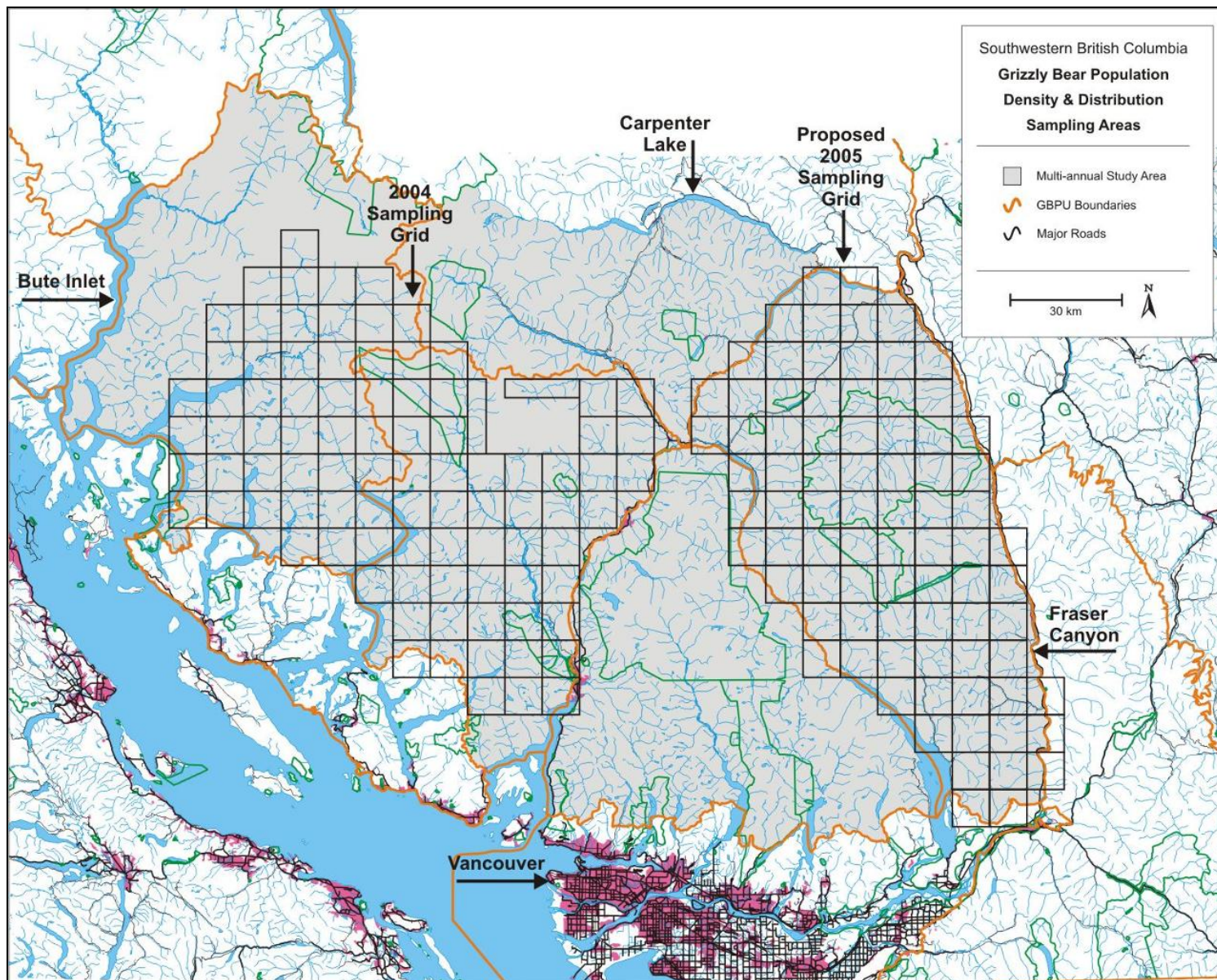


Figure 1. Multi-year focal area for sampling grizzly bear population density and distribution in the southern Coast Ranges of BC.



## METHODS

### Background

For bears, there have been recent advancements in noninvasive hair-capture, genetic tagging, and population density estimation (Woods et al. 1999, Mowat and Strobeck 2000, Boulanger and McLellan 2001, Boulanger et al. 2004). These developments have led to methods to develop spatially-explicit extrapolations of population density and to describe and test relationships between bear persistence and spatial factors of habitat and human influence (Apps et al. 2004). With adequate sample sizes, the degree of gene flow among broad landscapes can be evaluated and potential restricting factors can be identified (Proctor et al. 2002). Below, we describe progress towards addressing our study objectives using a combination of the above methods.

### Year 1 (2004) Sampling

*Field Methods* – We have proposed that this survey be conducted over a 3 – 4 year period, with the multi-year study area split into at least 3 annual sampling areas of ~10,000 km<sup>2</sup>. To sample grizzly bear occurrence, we are deploying noninvasive hair-snag stations (Woods et al. 1999). Stations were systematic-randomly distributed according to a grid with a 10 x 10 km cell size, and we sampled 90 cells during year 1. Using consistent criteria based on office evaluation and aircraft reconnaissance, sites within each cell were selected to maximize the likelihood of grizzly bear detection (in addition to helicopter landing-ability), with some also be placed strategically within what are expected to be movement “pinch-points”. At each site, a single strand (~25 m) of standard 4-pronged barbed-wire was placed around a group of trees at a height of 40-50 cm to form a closed polygon, within which a small brush pile was built and baited with a liquid lure (3.8 litres rotted cow blood and 1.9 litres fish oil). Sites were installed by teams of 2 or 3.

*Site Checks & Sample Collection* – During year 1 (2004), all sites were accessed by helicopter (Astar 350) for both installation and subsequent checks. We conducted 4 sampling sessions of approximately 10 days each between 10 June and 29 July. Between sessions, hair samples were collected, wire barbs were sterilized, and stations were re-lured but not moved. Samples (including probable black bears) were collected and stored, and a database of samples by site (cell) and session was built.

### Fall Movements by Grizzly Bears from the Ashlu Drainage to the Squamish River

A localized sampling effort during the fall 2004 was funded entirely by Ledcor Power Inc. The objective was to apply the non-invasive DNA hair-snag sampling methods described above to identify any grizzly bears that are likely to be making movements during late summer and fall from or through landscapes of the upper Ashlu to the Squamish River to forage on spawning salmon. Such movements would be expected to occur through a topographic “pinchpoint” within which much of the proposed Ashlu hydro-electric development would be situated. As part of the regional survey effort described above, probable grizzly bear hair samples were collected at 2 hair-snag sampling stations in the upper Ashlu drainage during June and July, 2004. From September 28 to November 27, 9 sampling stations were established and monitored at locations along the Squamish River at the Ashlu/Squamish confluence and both upstream and downstream along the Squamish River. The sampling objective was to maximize the likelihood of detecting and obtaining DNA samples from any salmon-feeding grizzly bears in the area. By matching the genetic signatures of these samples to those obtained from samples collected in surrounding

drainages earlier in the year (when grizzly bears are more likely to be occupying the core of their home ranges), general movements may be inferred. Matches made to grizzly bears detected in the upper Ashlu will represent baseline knowledge of seasonal movements by grizzly bears that likely are though the development zone. It is against these baseline data that monitoring results during and after the development phase can be compared.

### Genotyping of Samples

All hair-snag samples were sent to Wildlife Genetics International (WGI) of Nelson, BC, for DNA analysis under the supervision of Dr. David Paetkau.

*Sample Subselection & Species Assignment* – Although visual inspection in the laboratory can be used to exclude many if not most black bear samples with guard hairs (Woods et al. 1999), many of our samples were of underfur and could not be visually screened in this way (D. Paetkau, WGI, *pers. comm.*). Considering the total number of samples collected (2,017), we applied subsampling rules to ensure that we would not exceed the available budget for DNA analysis. Specifically, samples collected on adjacent barbs were considered eligible for analysis if they were at either end of the contiguous sample string and were separated from the other “eligible” sample by at least one barb. Samples within an adjacency string were to be selected if the outer sample was of poor quality. Using these criteria, all eligible samples with guard-hairs were evaluated to species for a given site (cell) and session. Species determination involved visual inspection of guard-hair shafts to exclude obvious black bears, and a single-locus (G10J) test to confirm the species of remaining samples (grizzly bears have an even number of alleles and black bears have an odd number). These results and the colour of all other (underfur) samples not analyzed were recorded in the database. Species was to be initially determined for at least half (to a maximum of 4) of all eligible samples for each site and session. If necessary to meet this criterion, species was genetically determined from other eligible samples (underfur) with priority on those with lighter-coloured hairs. If the above criteria resulted in a grizzly bear detection for a given site/session, then it was ensured that the species test was conducted for half of all eligible samples, with *no maximum*, and according to an alternating selection of samples from their sequential order. Genotyping of grizzly bear DNA samples was then conducted to 7 loci for identification of individual bears (see Selection and Variability of Genetic Markers, below).

*Selection and Variability of Genetic Markers* – The use of a minimum number of genetic markers is required to discriminate among individual grizzly bears with acceptably low error rates. In selecting makers at the analysis outset, WGI initially looked to the Owikeno and Kingcome studies (S. Himmer, *unpubl. data*) for guidance (D. Paetkau, *unpubl. report*). In comparison to these datasets, WGI found lower genetic variability in the 59 of our samples initially evaluated (see Results). This was especially apparent for one particular marker, which was excluded from consideration for individual genotyping. Due to the relatively low genetic variation of this population, WGI use 7 markers for individual genotyping rather than the 5 or 6 more typically required for other grizzly bear populations. After routine error-checking, it is highly improbable that the number of individuals identified has been overestimated due to inconsistent genotyping of different samples from the same individual (*ibid.*).

*Confirmation of Species Identity* – WGI has found the standard species test (using the G10J marker) to be completely reliable for differentiating black from grizzly bears. However, for independent confirmation, they considered allele frequency data for other makers and performed a 6-locus assignment test against a sample of known black bears captured during

a radiotelemetry study. Results provided an unambiguous confirmation that all samples successfully genotyped to individual were in fact from grizzly bears (ibid.).

*Microsatellite Analysis and Error Checking for Individual Identification* – Each grizzly bear sample was genotyped for individual identity. This involved a step-down process of exclusion and subsequent error-checking to ensure that the identification of unique genotypes was appropriately conservative but that individuals could be unequivocally distinguished from even their close relatives (Taberlet et al. 1996, Mills et al. 2000, Paetkau 2003). Samples that did not produce acceptable results for at least 4 of the 7 loci were excluded from further consideration. An enhanced second stage of analysis was conducted for samples that produced results at 4-6 loci resulting in a final set that produced results for all 7 loci. In the third (error-checking) stage, a computer search was conducted on all successfully genotyped samples to identify pairs with suspiciously similar genotypes (i.e., mismatch at only 1 or 2 loci), and these were re-analyzed to identify or rule-out genotyping errors. An automated search for identical genotypes was then conducted and multiple samples from the same individual were identified.

*Gender Analysis* – For each individual grizzly bear identified, WGI analyzed for gender based on a size polymorphism in the amelogenin gene (Ennis and Gallagher 1994).

## RESULTS – YEAR-1 PRELIMINARY DATA

*Samples Collected* – During our Year 1 (2004) sampling effort, we collected 2,017 hair-samples over the 90 Stations (cells), and 4 sessions, as well as from the 9 stations sampled during the fall. Of the 360 site/session combinations during the spring/summer,  $\geq 1$  sample was obtained from 306 site/sessions while 54 site/sessions yielded no samples. All samples were sent to the DNA lab (Wildlife Genetics International, Nelson, BC) where they were to be analyzed and/or stored in a controlled environment for at least 5 years.

*Sample Classification* – After processing by WGI, the 2,017 samples fell into the following classes (D. Paetkau, *unpubl. report*): 9% lacked suitable material for extraction; 46% were not extracted either because they had the visual appearance of black bear hair or because of subselection rules; 34% were genetically determined to be from black bears; 2% produced insufficient data to establish individual identity, either during the species test or during the multi-loci analysis; while 9% were grizzly bear samples that could be assigned to individuals.

*Genetic Variability* – In the evaluation of the initial 59 grizzly bear samples, WGI found heterozygosity ( $H_e$ ) to be 61%, which is lower than samples collected for the Owikeno study further to the north (69%). The  $H_e$  from our samples is also lower than that reported for most other mainland populations studied (Paetkau et al. 1998), which are as high as 80% (Nahanni watershed, NWT; Weaver and Apps 2005). Results from our samples suggest low population connectivity with grizzly bears further north in the southern Coast Ranges. This will be explored further in a provincial-scale population connectivity evaluation for which our samples have been contributed and will be analyzed to 15 loci (M. Proctor and D. Paetkau, *pers. comm.*).

*Individuals and Independent Detections* – Using the subsampling criteria, genetic analyses indicated a minimum of 98 detections of 58 (33M, 25F) different grizzly bears. In total, 111 independent detections were recorded, including known grizzly bear detections for which individual identity could not be established (Table 1). During the fall (Ashlu/Squamish) sampling effort, at least 3 grizzly bears were detected 10 times (Table 2). One (M8) had been detected during 3 of the 4 spring/summer sampling sessions, while 2 others (M57,

M58) had not been previously detected. Of the 360 site/session combinations during spring/summer sampling, at least 1 grizzly bear was detected at 91, at least 1 black bear was detected at 252, and both species were detected at 48 site/sessions. Variation in grizzly bear detection among sessions was relatively minor, though detection rate was slightly higher in the first session. The overall grizzly bear recapture rate among sessions was 0.19 (Table 3). This rate is surprisingly high given the low intensity of our sampling effort. For example, at least 4 other studies in British Columbia that used smaller cell sizes obtained lower capture probabilities, and one study that also achieved 0.19 used 7 x 7 km cells (Boulanger et al. 2002). Our high capture rate (relative to sampling intensity) may be a result of more extensive movements of grizzly bears (particularly males) in this population, perhaps due to the extremely rugged terrain and high amounts of inherently unsuitable habitat. We summarize known movements in Table 4.

**Table 1. Visits of individual grizzly bears to hair-snap DNA stations by sampling cell and session in the Squamish-Lillooet and Toba-Bute grizzly bear population units of southwest British Columbia, June-July, 2004. Identifier codes refer to males "M" or females "F". "GB" refers to a grizzly bear detection without individual identification.**

<b>Cell</b>	<b>Session I Start: 10 June<sup>a</sup> End: 23 June</b>	<b>Session II Start: 23 June End: 3 July</b>	<b>Session III Start: 3 July End: 13 July</b>	<b>Session IV Start: 13 July End: 23 July</b>	<b>Total (hits-indiv)</b>
1	M1				1 – 1
2	F2				1 – 1
3	M3		M39, F38	M39	4 – 3
4	F4		M40	M40	3 – 2
5				F47, F48	2 – 2
6	1 GB				1 – 1
7	M5	1 GB	1 GB	M5	4 – 1
8	M6	M26		M49	3 – 3
9		M27		M50	2 – 2
10		F28	M41		2 – 2
11		M30, F29	M30		3 – 2
12				M42	1 – 1
13			M42	M42	2 – 1
14		M10			1 – 1
15	M7, F31	M7, F31			4 – 2
16	M8		M7		2 – 2
17	M8, M9				2 – 2
18					
19					
20			M10		1 – 1
21	M10				1 – 1
22			M43	1 GB	2 – 1
23	F11	F11		M51	3 – 2
24	M8		M43		2 – 2
25					
26					
27	M14, F12, F13, F15	M14, F15	M32	M14	8 – 5
28		M32, M33	M32, M33	M33	5 – 2
29					
30					
31					
32					
33					
34	M16	F11			2 – 2
35			F44	1 GB	2 – 1
36			F21		1 – 1
37			M8		1 – 1
38					
39	F17		1 GB		2 – 1
40					
41					
42					
43					
44	F18	F34	1 GB	M52	4 – 3

**Continues to next page...**

Table 1. Continued.

Cell	Session I Start: 10 June <sup>a</sup> End: 23 June	Session II Start: 23 June End: 3 July	Session III Start: 3 July End: 13 July	Session IV Start: 13 July End: 23 July	Total (hits-indiv)
45	F19			1 GB	2 – 1
46		M35		M35	2 – 1
47					
48					
49		1 GB			1 – 1
50				1 GB	1 – 1
51					
52					
53					
54					
55					
56					
57	M16				1 – 1
58					
59					
60	M20	M20	M20	1 GB	4 – 1
61	F21			M54, F53	3 – 3
62					
63	M23, F22	M23, F22, F36	M45, F36	F22	8 – 4
64					
65					
66			M16	1 GB	2 – 1
67					
68				F55	1 – 1
69		M8, M20	M20		3 – 2
70					
71				F36	1 – 1
72					
73					
74					
75	F24, F25			M20	3 – 3
76					
77					
78					
79					
80				F37	1 – 1
81					
82					
83		F24, F37	1 GB		3 – 2
84			M46		1 – 1
85			M46		1 – 1
86				M56	1 – 1
87					
88					
89					
90					
New Bears	25	12	9	10	111 - 98

<sup>a</sup> Precise dates varied slightly among stations.

**Table 2. Sites, frequency, and results of hair-snag DNA sampling for grizzly bear detection along the lower Squamish River near the mouth of Ashlu Creek, October – November, 2004.**

<b>Site</b>	<b>Easting<sup>a</sup></b>	<b>Northing</b>	<b>Check Date</b>	<b>Black Bear</b>	<b>Grizzly Bear</b>	<b>Grizzly Identified</b>
Shovelnose #1	476102	5544637	Oct. 04		X	
			Oct. 12	X	X	
			Oct. 18			
			Oct. 25	X		
			Nov. 2			
			Nov. 8	X	X	M8
			Nov. 17			
			Nov. 27		X	
Shovelnose #2	476149	5544619	Nov. 17			
			Nov. 27	X		
Ashlu #1	477482	5528006	Oct. 4		X	M57, M58
			Oct. 12	X	X	M57, M58
			Oct. 18	X		
			Oct. 25			
			Nov. 2	X		
			Nov. 11			
			Nov. 17			
			Nov. 27		X	M57
Ashlu #2	478241	5527715	Oct. 20			
Ashlu #3	477224	5527943	Oct. 12	X		
			Oct. 18	X		
			Oct. 25			
			Nov. 11			
Ashlu #4	477036	5528315	Nov. 17	X		
			Nov. 27			
Sigurd #1	478382	5527444	Oct. 25	X		
			Nov. 3	X		
			Nov. 8			
			Nov. 17	X		
			Nov. 27			
West Squamish #1	477802	5530223	Nov. 8			
			Nov. 17			
			Nov. 27		X	M57
Lovelywater Outlet #1	484476	5516733	Nov. 2			
			Nov. 12			

<sup>a</sup> UTM Zone 10, NAD27



**Table 3. Capture summary by session for identified grizzly bears in the Squamish-Lillooet and Toba-Bute grizzly bear population units of southwest British Columbia, June-July, 2004.**

ID#	Sex	Captures Per Session				Recapture Rate <sup>a</sup>	Fall Captures <sup>b</sup>
		I	II	III	IV		
1	M	1				0	
2	F	1				0	
3	M	1				0	
4	F	1				0	
5	M	1			1	0.33	
6	M	1				0	
7	M	1	1	1		0.67	
8	M	3	1	1		0.67	1
9	M	1				0	
10	M	1	2	1		0.67	
11	F	1	2			0.33	
12	F	1				0	
13	F	1				0	
14	M	1	1		1	0.67	
15	F	1	1			0.33	
16	M	2		1		0.33	
17	F	1				0	
18	F	1				0	
19	F	1				0	
20	M	1	2	2	1	1	
21	F	1		1		0.33	
22	F	1	1		1	0.67	
23	M	1	1			0.33	
24	F	1	1			0.33	
25	F	1				0	
26	M		1			0	
27	M		1			0	
28	F		1			0	
29	F		1			0	
30	M		1	1		0.33	
31	F	1	1			0.33	
32	M		1	2		0.33	
33	M		1	1	1	0.67	
34	F		1			0	
35	M		1		1	0.33	
36	F		1	1	1	0.67	
37	F		1		1	0.33	
38	F			1		0	
39	M			1	1	0.33	
40	M			1	1	0.33	
41	M			1		0	
42	M			1	2	0.33	

Continues to next page...

**Table 3. Continued.**

ID#	Sex	Captures Per Session				Recapture Rate <sup>a</sup>	Fall Captures <sup>b</sup>
		I	II	III	IV		
43	M			1		0	
44	F			1		0	
45	M			1		0	
46	M			2		0	
47	F				1	0	
48	F				1	0	
49	M				1	0	
50	M				1	0	
51	M				1	0	
52	M				1	0	
53	F				1	0	
54	M				1	0	
55	F				1	0	
56	M				1	0	
57	M						4
58	M						2
Summary		29	25	22	22	0.19	7

<sup>a</sup> Among sessions.

<sup>b</sup> Localized sampling during October/November along the Squamish River near the mouth of Ashlu Creek (see text for details).

**Table 4. Maximum distance between multiple-detections of individual grizzly bears in the Squamish-Lillooet and Toba-Bute grizzly bear population units of southwest British Columbia, June-July, 2004. Bears with a maximum distance of 0 km between detections are those detected multiple times at a single station.**

<b>ID</b>	<b>Sex</b>	<b>Detections</b>	<b>Max Interval (Days)</b>	<b>Max Distance (Km)</b>	<b>Estimated Movement Area<sup>a</sup></b>
5	M	2	40	0	n/a
7	M	3	30	8	48
8	M	6	40	63	3,078
10	M	4	30	33	855
11	F	3	20	6	30
14	M	3	40	0	n/a
15	F	2	20	0	n/a
16	M	3	30	34	887
20	M	6	40	25	471
21	F	2	30	21	360
22	F	3	40	0	n/a
23	M	2	20	0	n/a
24	F	2	20	22	377
30	M	2	20	0	n/a
31	F	2	20	0	n/a
32	M	3	20	17	232
33	M	3	30	0	n/a
35	M	2	30	0	n/a
36	F	3	30	14	156
37	F	2	30	19	269
39	M	2	20	0	n/a
40	M	2	20	0	n/a
42	M	3	20	6	30
46	M	2	10	4	12

<sup>a</sup> Area of a circle with diameter equal to the maximum distance between multiple detections.

## DISCUSSION

### Spring/Summer Sampling:

Generally, the distribution of grizzly bear detections matched landscapes that we expected to support resident animals, with some exceptions. Grizzly bears were detected in some landscapes where occupancy was uncertain (Figure 2). These included valleys leading to Salmon and Narrows Inlets (cells 80, 83, 84, 85, 86) and adjacent landscapes to the north that include the upper Ashlu drainage (cells 69, 75). Directly west of Jervis Inlet, grizzly bears were detected in the valleys of Britannia River and Slane Creek (cells 66, 57). Along the eastern edge of our sampling area, we detected grizzly bears between the Squamish River and Highway 99 in the upper Soo, Callaghan, and Brandywine drainages (cells 49, 50, 63, and 71). We also detected grizzly bears further north in the upper Pemberton (cell 39) and Ryan (cell 27, 28) drainages. It is also notable that we consistently did not detect grizzly bears directly east of Desolation Sound and in landscapes that drain to the upper reach of Powell Lake.

It should be noted that our sampling was conducted through late spring and early summer and that coastal grizzly bears are likely to have been well dispersed and gradually moving to higher elevations during our sampling period. We placed stations in relatively high elevation habitats where possible, but in several cases the only sites potentially available to us were valley-bottom and estuarine locations that are more likely to have been used earlier in the spring. Although it is important to acknowledge seasonal influences on site-specific detection rates, we felt that it was more important to sample the distribution of the population when bears were using landscapes most representative of annual home ranges, rather than at times when they may be more locally concentrated despite the higher detection rates that this may provide. Finally, it is important to note the potential influence of both weather and scent-lure on detection rates. Both temperature and precipitation will influence the attractiveness of hair-snag stations to bears, and stations were subject to a mix of weather conditions during the sampling period. Although detection rates will also be influenced by the lure being used, our lure and methods were standardized across sites and sessions.

The interim database assembled from our sampling results includes records for all samples analyzed linked to cell, session, and station coordinates. Data have been consolidated and summarized according to species occurrence (Figure 2), the minimum number of different bears detected per site/session combination (Figure 3), and individual bears detected at stations and their frequency among sessions (Table 1; Figure 4).

In addition to the final data summary, measures of success upon project completion (final year) will include population estimates, spatial predictions of grizzly bear occurrence and distribution, and spatial variation in population density. Based on interpretation of analyses, population core areas and landscape linkages will be identified, conservation implications will be discussed, and management recommendations will be provided.

### Fall Sampling Near the Ashlu/Squamish Confluence:

Of the 3 grizzly bears detected near the confluence of Ashlu Creek and the Squamish River during October and November, 2 had not been previously detected. However, 1 bear (M8) had been independently detected 5 times during the previous spring/summer sampling sessions (cells 16, 17, 24, 37, and 69). These detections were surprisingly widespread, and with the fall detection indicate a minimum home range of 792 km<sup>2</sup> (actual home range is undoubtedly larger; see Table 4). Despite the fact that this bear was detected at site 69 in the upper Ashlu drainage, it is not obvious from the data that this bear moved directly

between the upper Ashlu and the Squamish River as he may have come directly down the Squamish. However, given the extensive movements that M8 obviously does make and the number of other individual grizzly bears detected in the upper Ashlu and surrounding drainages (M20, M46, M56, F24, F25, F37, F55), it is likely that the lower Ashlu is at least periodically used as a movement route, particularly during the fall salmon run.

## RECOMMENDATIONS

### Additional Sampling within the Ashlu Drainage

It is critical that sampling conducted prior to the Ashlu hydro development be of an intensity adequate to have a high probability of detecting most if not all grizzly bears fully or partially resident within the Ashlu drainage. Because Ledcor's involvement in this study did not begin until the fall, the spring sampling that was conducted in the upper Ashlu was done at the same, relatively low intensity (1 station per 100 km<sup>2</sup>) as the rest of the 9,600 km<sup>2</sup> year-1 survey area. To ensure that the baseline knowledge for longer-term monitoring is defensible, we recommend that a higher intensity of sampling be conducted within the upper Ashlu during spring 2005 to maximize the likelihood of detecting all grizzly bears that may partially reside within this landscape.

### Planned Spatial Analyses

During the analysis phase of this study, we will apply a multi-scale approach in analyzing how factors of habitat and human influence relate to spatial patterns of grizzly bear occurrence across the multi-year sampling area (*sensu* Apps et al. 2004). We also plan to analyze individual genotypes to 15 loci to address questions of population connectivity and individual relatedness (*sensu* Proctor et al. 2002) relative to landscape conditions and potential natural and human hindrance to movement. Many of the GIS databases necessary to derive relevant spatial variables have already been assembled (Apps and Hamilton 2002), and these will be updated given recent changes in habitat and/or human conditions. Variables considered will account for terrain conditions, forest overstory, land cover, vegetation productivity, point, linear, and polygon features relating to human activity types and levels, and climatic/physiographic associations. Source data will be mostly of 1:20,000 scale, with some of 1:250,000, and will also include Landsat TM satellite imagery at 30 m resolution. We will describe relationships between grizzly bear detection and each variable considered, and how these relationships may be influenced by spatial scales ranging from an expected daily foraging radius to an annual home range. Integrating results across scales, the spatial output from this analysis will be a map image of predicted grizzly bear occurrence probability within a defined greater extrapolation area across the southern Coast Ranges of BC. Using the density estimates for the intensive sampling areas, this output will be transformed to reflect spatial variability in estimated grizzly bear density (see below). This final output can be interpreted as an objective delineation of core habitat/population areas and landscape linkages among them.

The accuracy and robustness of predictions from our spatial models will reflect how representative our sampling has been of environmental variation within the southern Coast Ranges of BC (Hirzel and Guisan 2002). Therefore, prior to model extrapolation, we will conduct a secondary analysis to evaluate our sampling for representation of landscape habitat and human conditions in the greater region of BC's southern Coast Ranges (Elith et al. 2002). This will be used to objectively define a greater model extrapolation area and to provide a measure of confidence in spatial predictions of grizzly bear occurrence.

## Population Density

Unique population density estimates will be derived for defined areas<sup>1</sup> using capture-recapture analyses and an open population estimator within program MARK (White and Burnham 1999). However, it is important to highlight that obtaining population estimates for defined sampling grids is not the ultimate goal of this study. Estimates of population density for defined areas are required only to transform spatially explicit predictions of occurrence probability (*sensu* Apps et al. 2004). The result will predict spatial variation in grizzly bear population density and distribution across the southern Coast Ranges of BC and can be used to infer population size or average density within any smaller area. Given the underlying goal of explaining patterns of population distribution in terms of landscape conditions (habitat and human influence), our sampling areas are extensive and encompass a wide range of conditions and expected grizzly bear densities. Sampling areas are also located to include landscapes of which grizzly bear occupancy is uncertain. Because we also wish to evaluate how natural and human factors may influence population connectivity, the sampling areas considered in each year (and most certainly over multiple years) are expected to straddle natural and human features that result in some degree of demographic discontinuity. These above criteria are in direct contrast to many previous DNA-based grizzly bear population “inventories” that have defined the location and configuration of sampling areas to maximize capture probabilities and demographic “closure”, in turn maximizing statistical power for population estimation and placing discrete bounds on the *actual* area sampled (which of course can extend well beyond a sampling grid given the wide-ranging movements of grizzly bears). In order to sample large and extensive areas within a realistic budget, we have also chosen to sample less intensively (i.e., 10 x 10 km cell size). The implications of this dilution are that every bear in the sampled population may not have a >0 probability of capture (particularly females), and “open” population estimators are generally not robust to unequal capture probabilities (McDonald and Amstrup 2001). However, our capture probability in Year 1 (0.19) was better than at least 4 grizzly bear DNA-based population surveys that used 8 x 8 and 9 x 9 km cell sizes and was comparable to one study that used 7 x 7 km cells (Boulanger et al. 2002). This suggests that grizzly bears in at least our Year 1 sampling area ranged over relatively large areas and that our sampling intensity may be adequate for population estimation. Moreover, with respect to demographic closure, population estimates will not necessarily be derived for each exact annual sampling area. Rather, we will define one or more discrete units within each that are more likely to achieve demographic closure, and independent estimates will be derived for each. If deemed necessary, we will apply appropriate adjustments to population estimates to account for closure violation (Boulanger and McLellan 2001).

## Coordination with other Studies

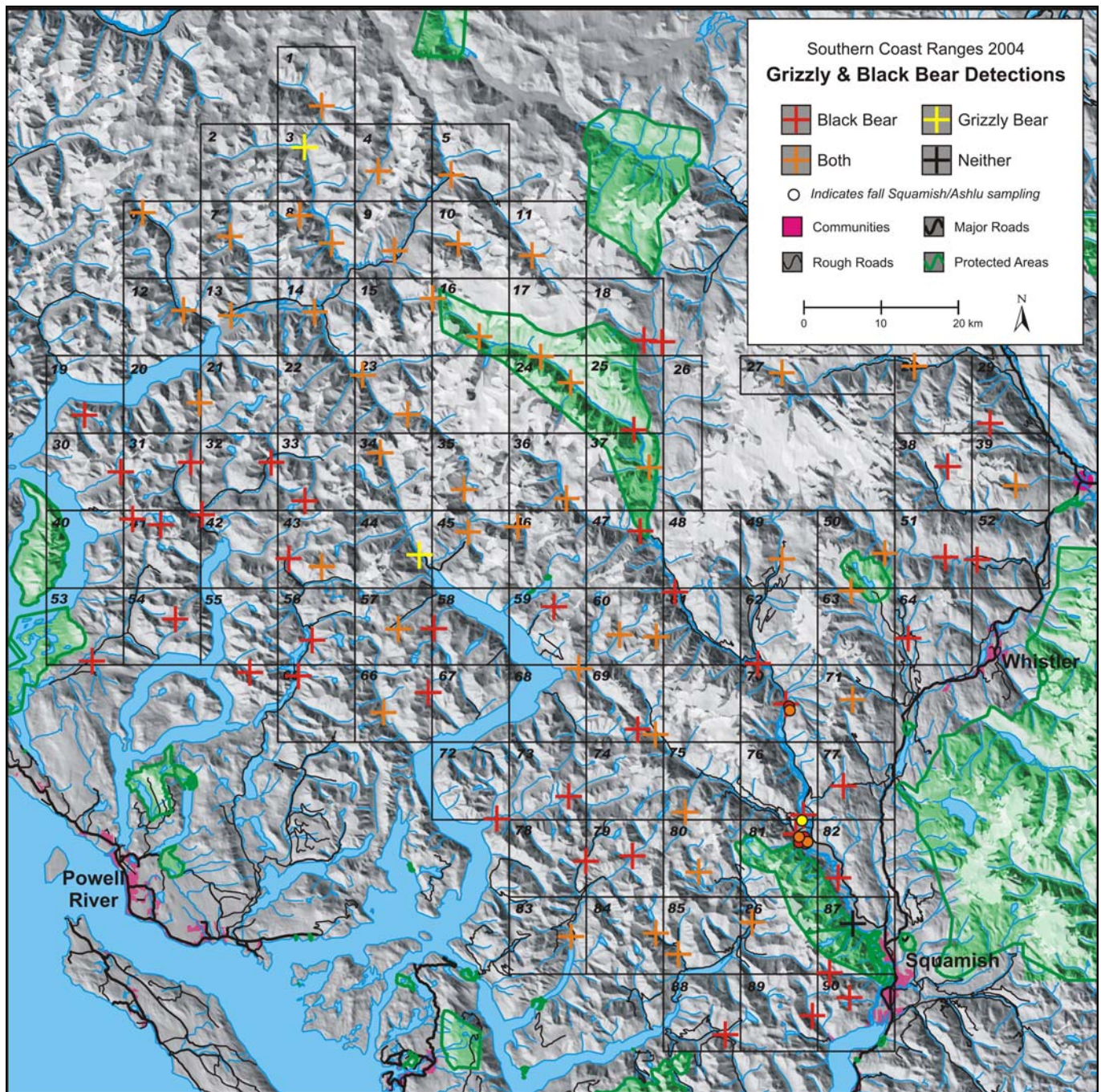
This research is being coordinated directly with a parallel effort to address grizzly bear population demographics and finer-scale movements and habitat associations in an area that straddles the boundary between the Stein-Nahatlatch and South Chilcotin Ranges GBPUs (B. McLellan, MOF, and A. Hamilton, WLAP, *pers. comm.*). This project is being conducted under the auspices of the Lillooet Grizzly Bear Working Group that has membership from the local community and First Nations. This study is complimentary with ours and is expected to be of mutual benefit. As previously noted, results from the DNA sampling will help to identify landscapes where more intensive research into grizzly bear movements and/or

---

<sup>1</sup> will likely involve stratification within annual sampling areas

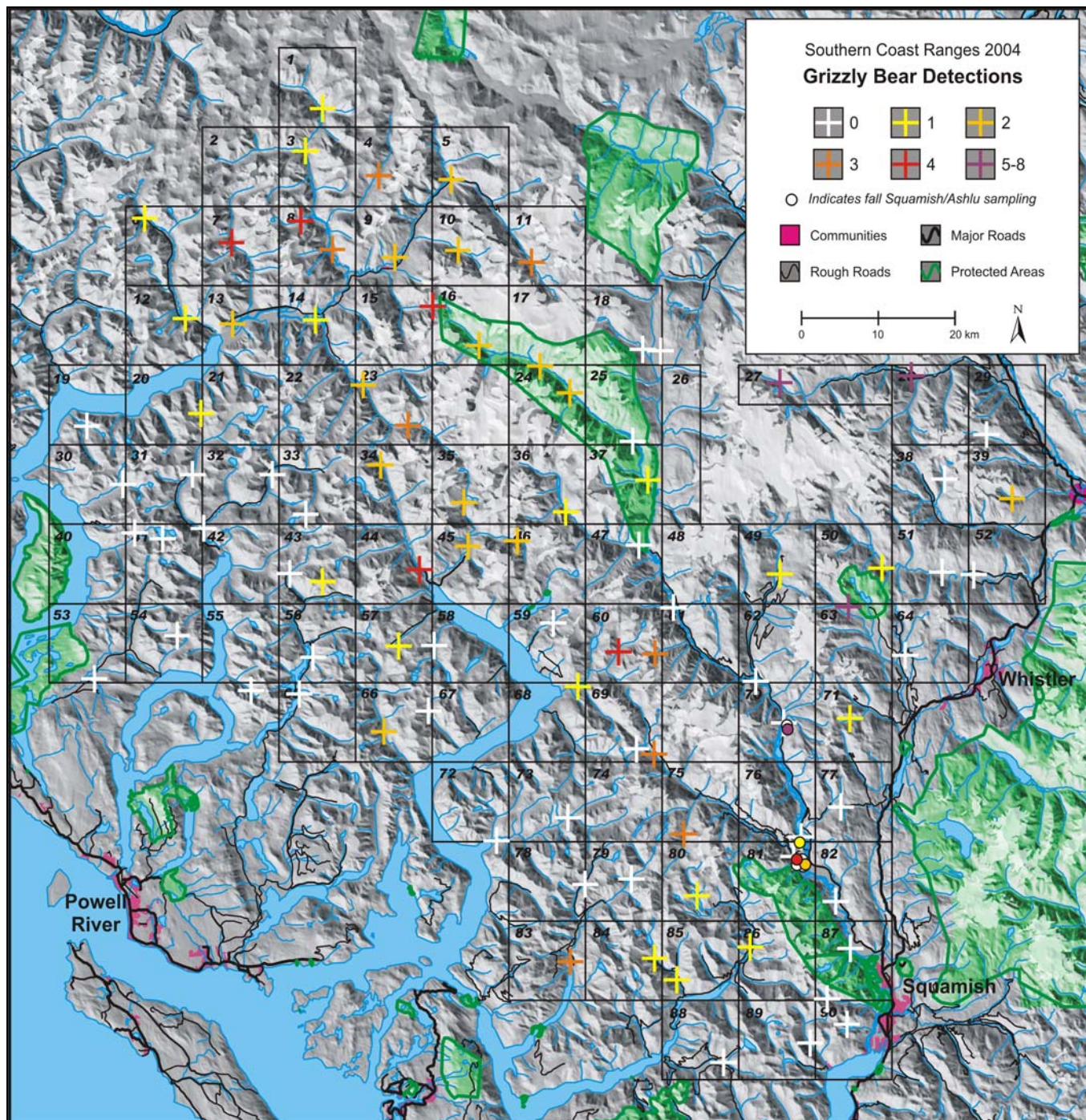
demographics is appropriate and feasible. Also, the opportunity to track the precise movements of individual grizzly bears can be helpful in evaluating certain assumptions of hair-snag DNA sampling. However, baiting and trapping may reduce DNA capture probabilities for radiocollared animals due to aversive conditioning and thus should be conducted after hair-snag sampling is complete, or helicopter darting should be employed for capture.





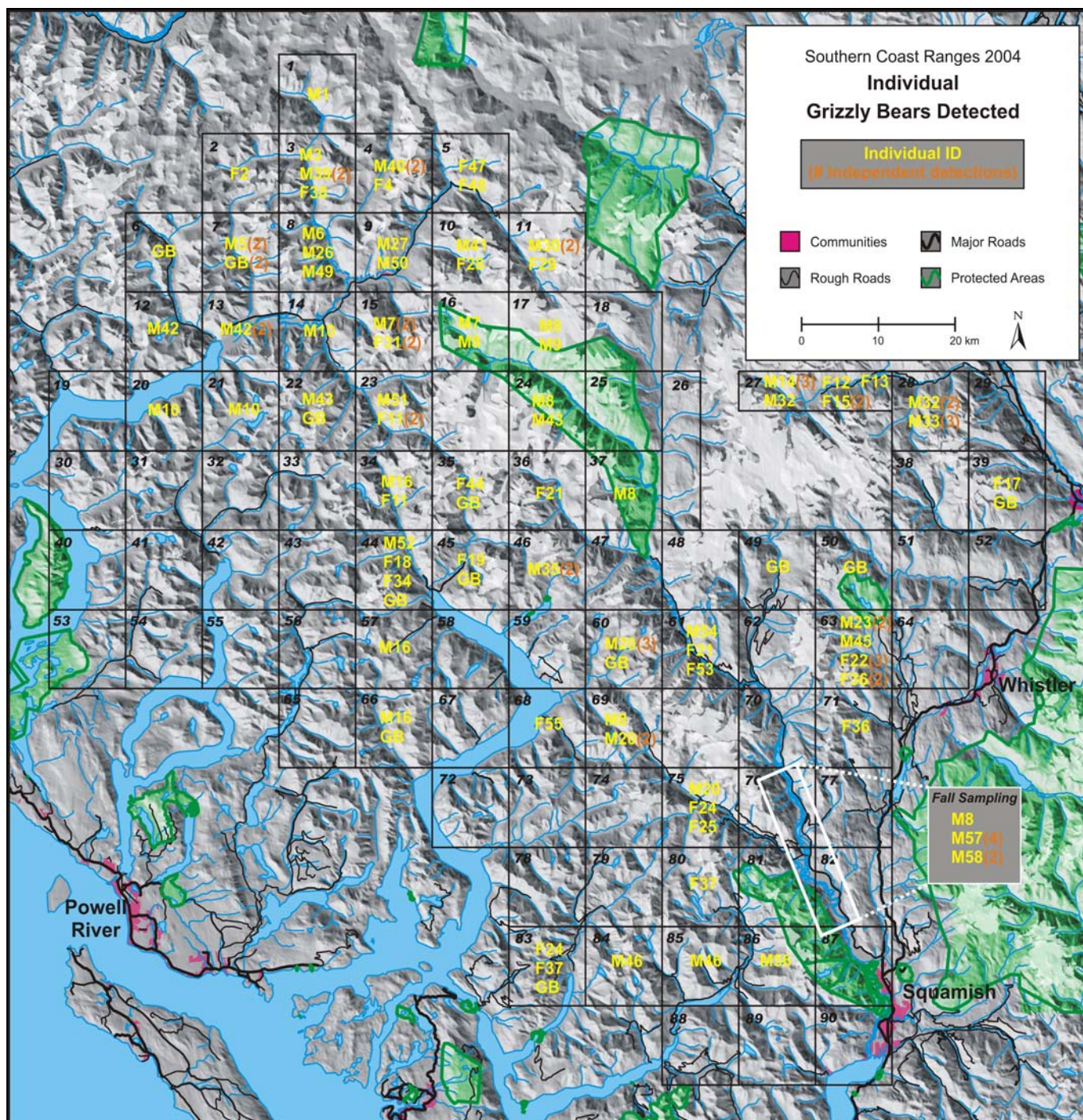
**Figure 2.** Detection of  $\geq 1$  black or grizzly bear at hair-snag DNA sampling stations across the Squamish-Lillooet and Toba-Bute (partial) grizzly bear population units of southwestern British Columbia. Data are from 4 sampling sessions during June and July of 2004. Additional detections from localized sampling during October and November, 2004, are also indicated (see legend).





**Figure 3. Independent detections by grizzly bears at hair-snag DNA sampling stations across the Squamish-Lillooet and Toba-Bute (partial) grizzly bear population units of southwestern British Columbia. Data are from 4 sampling sessions during June and July of 2004. Additional detections from localized sampling during October and November, 2004, are also indicated (see legend).**





**Figure 4.** Known identities of grizzly bears detected at hair-snag DNA sampling stations across the Squamish-Lillooet and Toba-Bute (partial) grizzly bear population units of southwestern British Columbia. Data are from 4 sampling sessions during June and July of 2004. Additional detections from localized sampling during October and November, 2004, are also indicated (see legend).

## LITERATURE CITED

- Apps, C. D. 2001. Grizzly Bear Population Linkage Zones in the Sea to Sky Planning Area of Southwestern British Columbia. Prepared for Ministry of Water, Land and Air Protection, Surrey, BC. Aspen Wildlife Research, Calgary, AB.
- Apps, C. D., and A. N. Hamilton. 2002. Grizzly bear habitat effectiveness and connectivity in southwestern British Columbia. Aspen Wildlife Research and Ministry of Water, Land and Air Protection, Victoria.
- Apps, C. D., B. N. McLellan, J. G. Woods, and M. F. Proctor. 2004. Estimating grizzly bear distribution and abundance relative to habitat and human influence. *Journal of Wildlife Management* 68. In Press.
- Boulanger, J., and B. N. McLellan. 2001. Closure violation bias in DNA based mark-recapture population estimates of grizzly bears. *Canadian Journal of Zoology* 79:642-651.
- Boulanger, J., G. C. White, B. N. McLellan, J. Woods, M. Proctor, and S. Himmer. 2002. A meta-analysis of grizzly bear DNA mark-recapture projects in British Columbia. *Ursus* 13:137-152.
- Boulanger, J., B. N. McLellan, J. G. Woods, and M. Proctor, and C. Strobeck. 2004. Sampling design and capture probability bias in DNA-based capture-recapture population and density estimates of grizzly bears. *Journal of Wildlife Management* 68:457-469.
- Craighead, F. L., and E. R. Vyse. 1996. Brown/grizzly bear metapopulations. Pages 325-351 in D. R. McCullough, editor. *Metapopulations and wildlife conservation*. Island Press, Covelo, California.
- Demarchi, D. A. 1996. Ecoregions of British Columbia. Ministry of Environment, Land, and Parks, Victoria, British Columbia, Canada.
- Doak, D. F. 1995. Source-sink models and the problem of habitat degradation: general models and applications to the Yellowstone grizzly. *Conservation Biology* 9:1370-1379.
- Elith, J., M. A. Burgman, and H. M. Regan. 2002. Mapping epistemic uncertainties and vague concepts in predictions of species distribution. *Ecological Modeling* 157:313-329.
- Ennis, S., and T. F. Gallagher. 1994. PCR-based sex determination assay in cattle based on the bovine Amelogenin locus. *Animal Genetics* 25:425-427.
- Hamilton, A. N., D. C. Heard, and M. A. Austin. 2004. British Columbia grizzly bear (*Ursus arctos*) population estimate 2004. British Columbia Ministry of Water Land, and Air Protection, Biodiversity Branch. Victoria.
- Hirzel, A., and A. Guisan. 2002. Which is the optimal sampling strategy for habitat suitability modeling. *Ecological Modeling* 157:331-341.
- McDonald, T. L., and S. C. Amstrup. 2001. Estimation of population size using open mark-recapture models. *J. Agricultural, Biological, and Environmental Statistics* 6:206-220.
- McLellan, B. N. 1998. Maintaining viability of brown bears along the southern fringe of their distribution. *Ursus* 10:607-611.

- MELP (Ministry of Environment, Lands and Parks). 1995. British Columbia grizzly bear conservation strategy. British Columbia Ministry of Environment, Lands and Parks, Victoria, British Columbia, Canada.
- Mills, L. S. J. J. Citta, K. P. Lair, M. K. Schwartz, and D. A. Tallmon. 2000. Estimating animal abundance using non-invasive DNA sampling: promise and pitfalls. *Ecological Applications* 10:283-294.
- Mowat, G., and C. Strobeck. 2000. Estimating population size of grizzly bears using hair capture, DNA profiling, and mark-recapture analysis. *Journal of Wildlife Management* 64:183-193.
- Paetkau, D. 2003. An empirical exploration of data quality in DNA-based population inventories. *Molecular Ecology* 12:1375-1387.
- Paetkau, D., L. P. Waits, P. L. Clarkson, L. Craighead, E. Vyse, R. Ward, and C. Strobeck. 1998. Variation in genetic diversity across the range of North American brown bears. *Conservation Biology* 12:418-429.
- Proctor, M., B. N. McLellan, and C. Strobeck. 2002. Population fragmentation of grizzly bears in southeastern British Columbia, Canada. *Ursus* 13:153-160.
- Taberlet, P., S. Griffin, B. Bossenns, S. Questlau, V. Manceau, N. Escarvage, L. P. Waits, and J. Bouvet. 1996. Reliable genotyping of samples with very low DNA quantities using PCR. *Nucleic Acids Research* 24:3189-3194.
- Weaver, J. and C. Apps. 2005. Distribution of the grizzly bear population in the greater Nahanni ecosystem: a preliminary model. Wildlife Conservation Society, Toronto, Ontario.
- White, G. C., and K. P. Burnham. 1999. Program MARK: survival estimation from populations of marked animals. *Bird Study* 46 Supplement:120-138.
- Woods, J. G., D. Paetkau, D. Lewis, B. N. McLellan, M. Proctor, and C. Strobeck. 1999. Genetic tagging of free-ranging black and brown bears. *Wildlife Society Bulletin* 27:616-627.