

NOTES

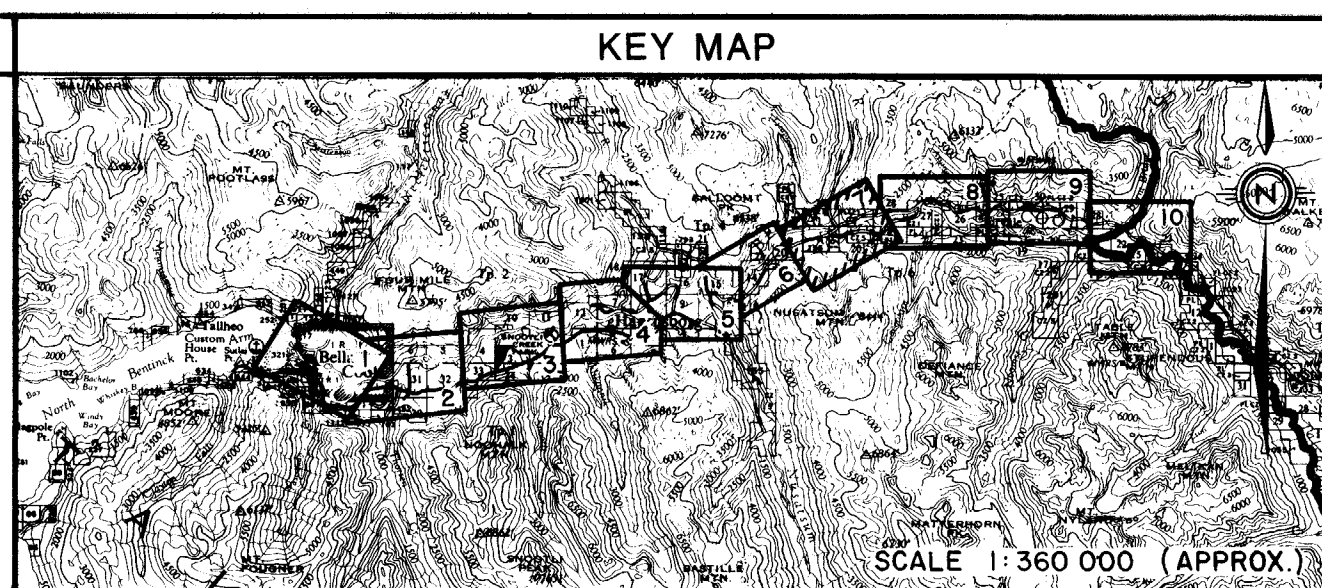
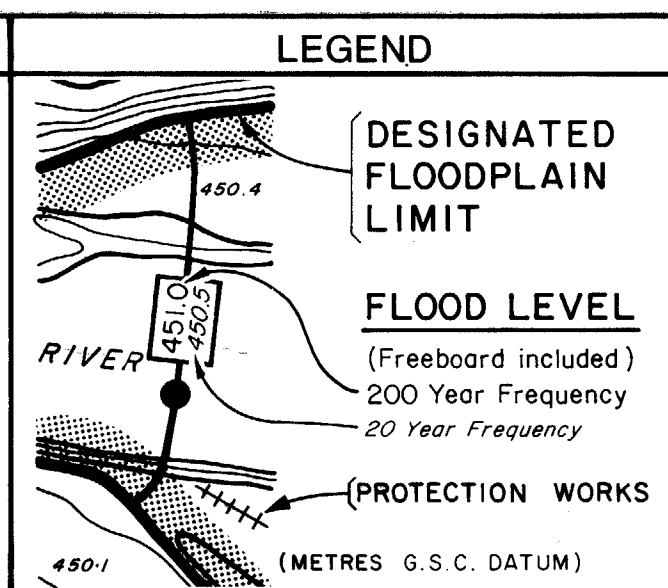
Produced by: British Columbia Water Management Branch, Special Projects Section, Floodplain Mapping Program.

Survey: River survey done by Surveys Section, Water Management Branch, Survey Projects 81FDC-2 and 86FDC-1, (1988 and 1986).
a) Horizontal control based on provincial network.
b) Elevations are in metres and are referred to Canadian Survey of Canada datum. -1.0 indicates survey.

Mapping: Base mapping done by Map Production Division, Survey and Resource Mapping Branch, Project 85-101, (1985).
a) Contour interval 2 metres and greater; spot elevations shown to 0.1 metres, with accuracy to ± 0.5 metres, except where noted.
b) If original referred to U.T.M. Projection Zone 9.

FLOODPLAIN DATA

1. The floodplain areas as depicted on this map have been interin designated pursuant to the Canada/British Columbia Floodplain Mapping Agreement (1988) by the Minister of the Environment for Canada and the Minister of Environment for British Columbia.
2. Flooding may still occur outside of the interin designated floodplain areas. The Ministers do not assume any liability by reason of the interin designation or failure to interin designate areas on this map.
3. The designated Flood has a statistical frequency of occurrence of once every 200 years.
4. The flood levels were computed using a standard step method modelling technique, assuming open water flow conditions.
5. The floodplain limits assume the absence of all dykes.
6. The floodplain limits include an allowance for freeboard.
7. The floodplain limits are not established on the ground by legal survey.
8. The floodplain limits are not delineated for side streams and tributaries.
9. The required setback of buildings from the natural boundaries of lakes and watercourses to allow for the passage of floodwaters and possible bank erosion is not shown. This information is available either through local municipalities or the Ministry of Environment.
10. MAPS AVAILABLE FROM THE MINISTRY OF CROWN LANDS, SURVEYS AND RESOURCE MAPPING BRANCH, MAPS B.C., MAP AND AIR PHOTO SALES, VICTORIA, B.C.



REVISIONS		
No.	DESCRIPTION	DATE

ISSUE OF MAPPING DATE SEPTEMBER 30, 1989	ENVIRONMENT CANADA INLAND WATERS ENVIRONNEMENT CANADA EAUX INTERIEURES	BRITISH COLUMBIA MINISTRY OF ENVIRONMENT COLUMBIE-BRITANNIQUE MINISTÈRE DE L'ENVIRONNEMENT	CANADA BRITISH COLUMBIA FLOODPLAIN MAPPING AGREEMENT L'ACCORD CANADA COLUMBIE-BRITANNIQUE SUR LA CARTOGRAPHIE DES PLAINES D'INONDATION	FILE No. 91-2910-S.1
DRAWN T.C.E.	FLOODPLAIN MAPPING BELLA COALA RIVER			N.T.S. MAP No. 93D/7.8
CHECKED P.D.				SCALE 1:5 000
RIVER SURVEY B.R.S., M.P.				NEGATIVE No. 263989
DESIGNED B.B.				DRAWING No. REV. 87-56-7
ENGINEER R.W.N.H.	RECOMMENDED P.H.O.S.	APPROVED B.B.H.	Scale in metres 100m 0 100 200 300 400 500m	SHEET 7 of 10