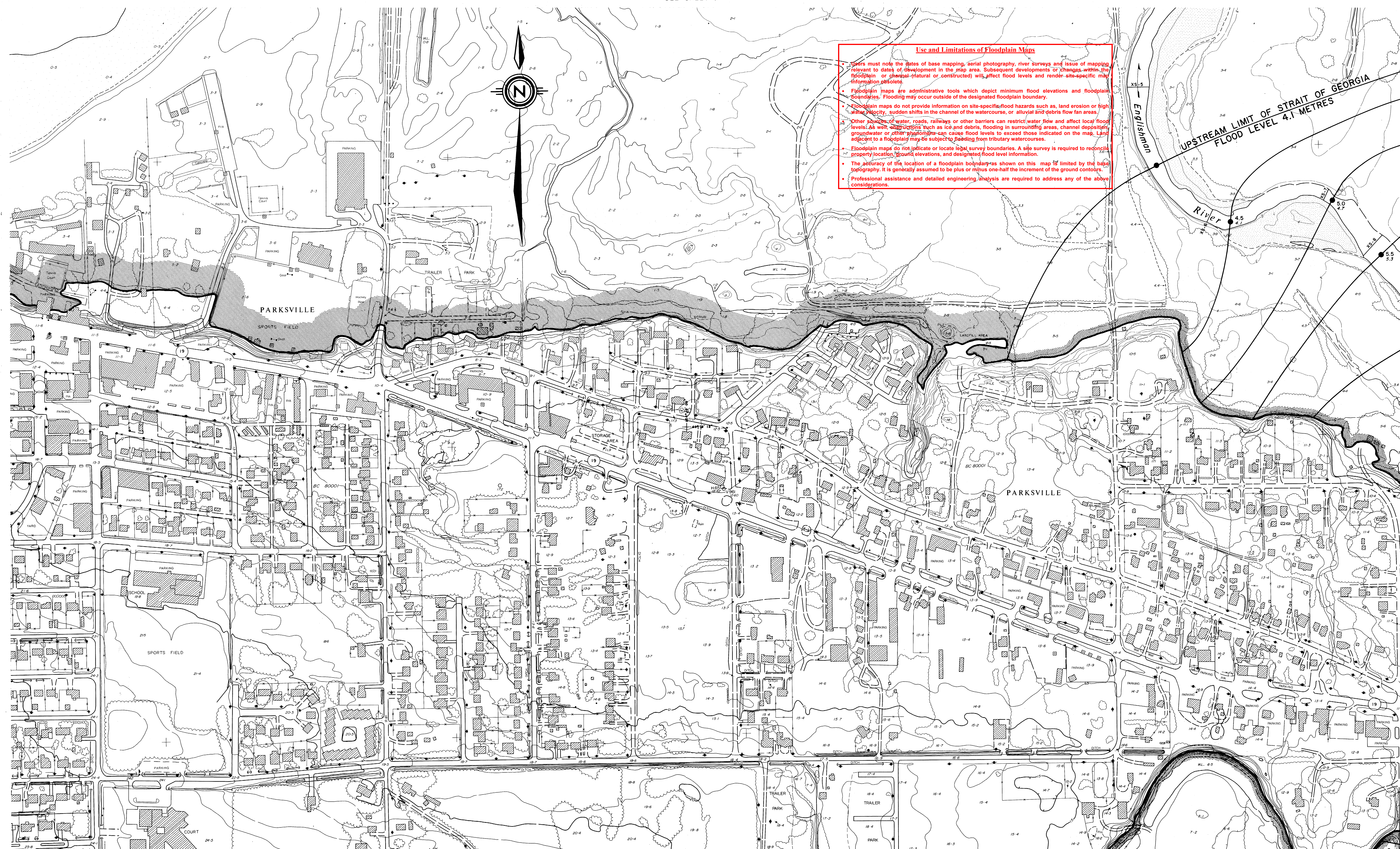


SEE SHEET 1



SEE SHEET 5

## NOTES

Produced by: British Columbia Water Management Branch  
Floodplain Mapping Program.

Survey: River survey done by Planning and Survey Section,  
Water Management Branch.

- a) Horizontal control based on provincial network.  
b) Elevations are in metres and are referred to  
Geodetic Survey of Canada datum.

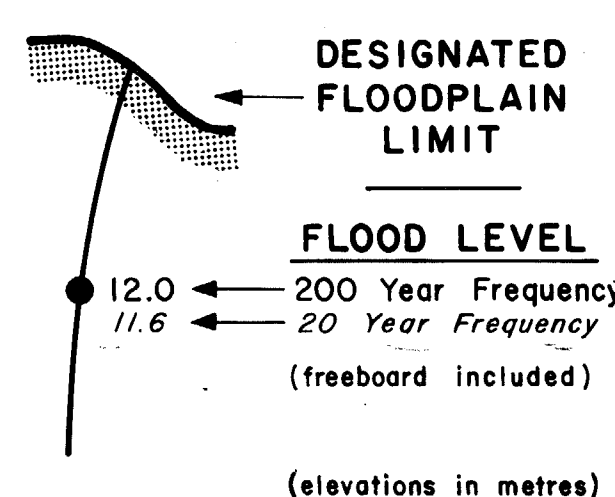
Mapping: Base mapping done by Map Production Division, Surveys and Resource  
Mapping Branch.

- a) Contour interval 1 metre; spot elevations shown  
to 0.1 metres, with accuracy to  $\pm 0.3$  metres, except where noted.  
b) Grid origin referred to U.T.M. Projection Zone 10.  
Floodplain Mapping produced by Planning Subsection,  
Water Management Branch.

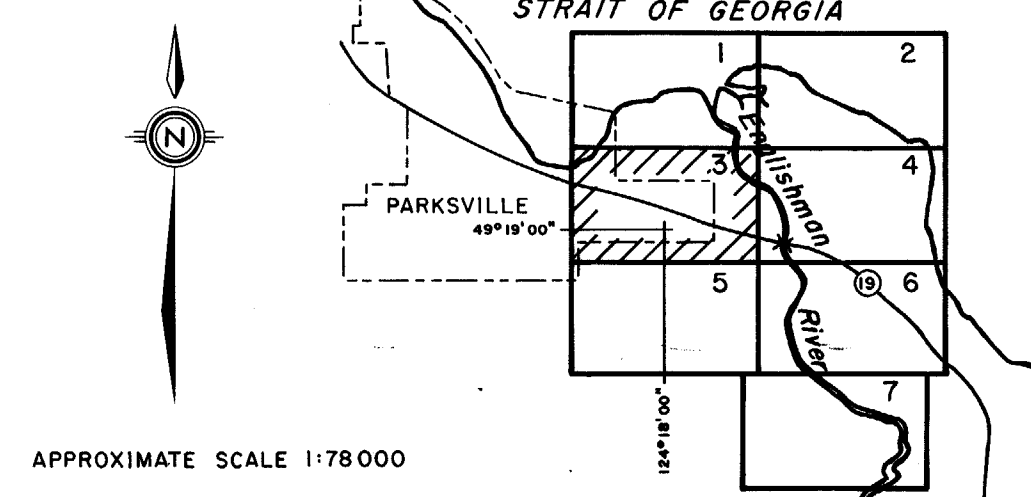
## FLOODPLAIN DATA

- a) The Designated Flood has a statistical frequency of occurrence of once every 200 years.  
b) Flood levels were computed using a standard step method modelling technique, assuming  
open water flow conditions.  
c) Floodplain limits assume the absence of all dykes.  
d) Floodplain limits and flood levels include allowance for freeboard.  
e) Position of floodplain boundary not established on the ground by legal survey.  
f) Floodplain limits are not delineated for side streams and tributaries.  
g) Required setback of buildings from the natural boundaries of lakes and watercourses to  
allow for the passage of floodwaters and possible bank erosion are not shown. This  
information is available either through local municipalities or the Ministry of  
Environment.

## LEGEND



## KEY MAP



## REVISIONS

No.	DESCRIPTION	DATE
1	DATE OF PHOTOGRAPHY APRIL 1980	
2	FLOODPLAIN STUDIES TECHNICIAN 3rd Danke	
3	ENGINEER R. W. Nilsen	
4	ISSUE OF MAPPING DATE APRIL 1985	

## TOPOGRAPHIC MAPPING

DATE OF PHOTOGRAPHY  
APRIL 1980

FLOODPLAIN STUDIES  
TECHNICIAN  
3rd Danke

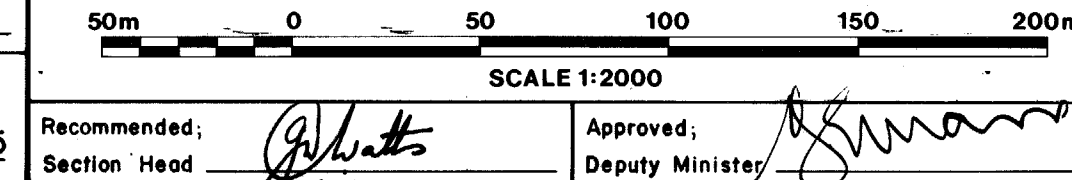
ENGINEER  
R. W. Nilsen

ISSUE OF MAPPING  
DATE  
APRIL 1985



Province of British Columbia Ministry of Environment  
Water Management Branch

**FLOODPLAIN MAPPING**  
**ENGLISHMAN RIVER**



FILE No.

0305030-19

SCALE

1:2000

DRAWING No.

85-23-3

SHEET

3 of 7