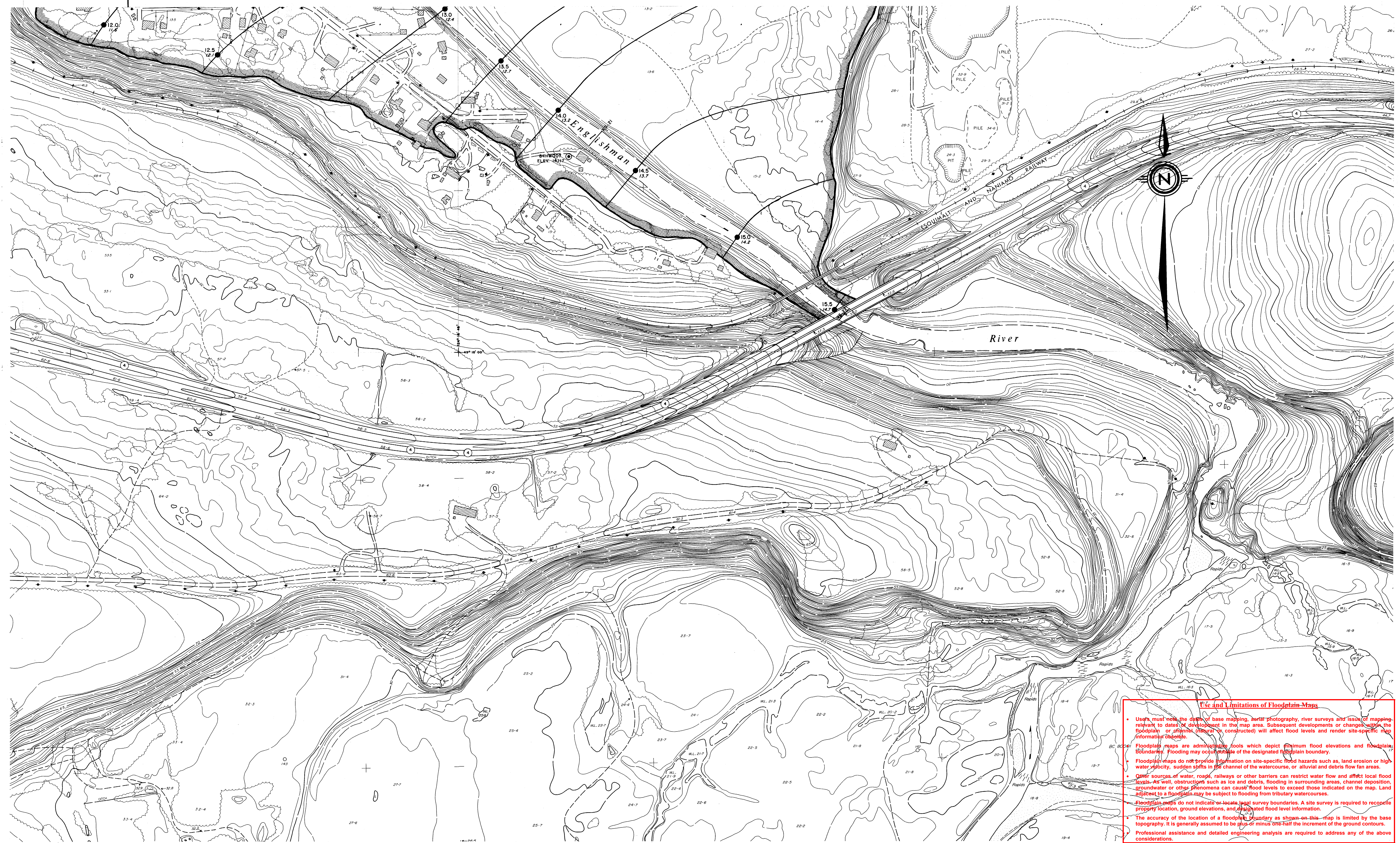


SEE SHEET 5

SEE SHEET 6



## NOTES

Produced by: British Columbia Water Management Branch  
Floodplain Mapping Program.

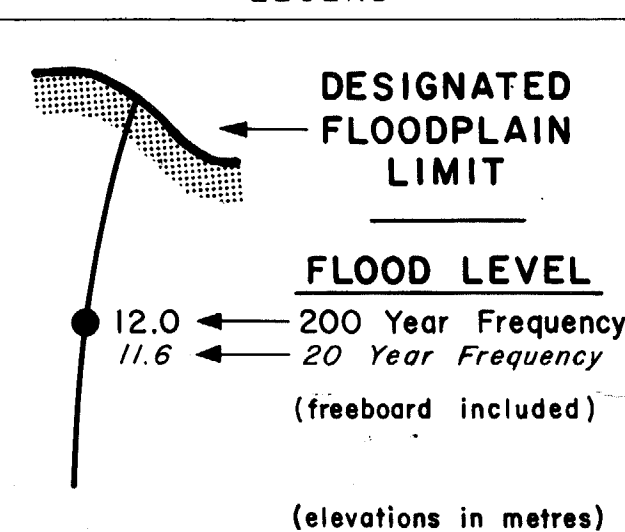
Survey: River survey done by Planning and Survey Section, Water Management Branch.  
a) Horizontal control based on provincial network.  
b) Elevations are in metres and are referred to Geodetic Survey of Canada datum.

Mapping: Base mapping done by Map Production Division, Surveys and Resource Mapping Branch.  
a) Contour interval - 1 metre; spot elevations shown to 0.1 metres, with accuracy to  $\pm 0.3$  metres, except where noted.  
b) Grid origin referred to U.T.M. Projection Zone 10.  
Floodplain Mapping produced by Planning Subsection, Water Management Branch.

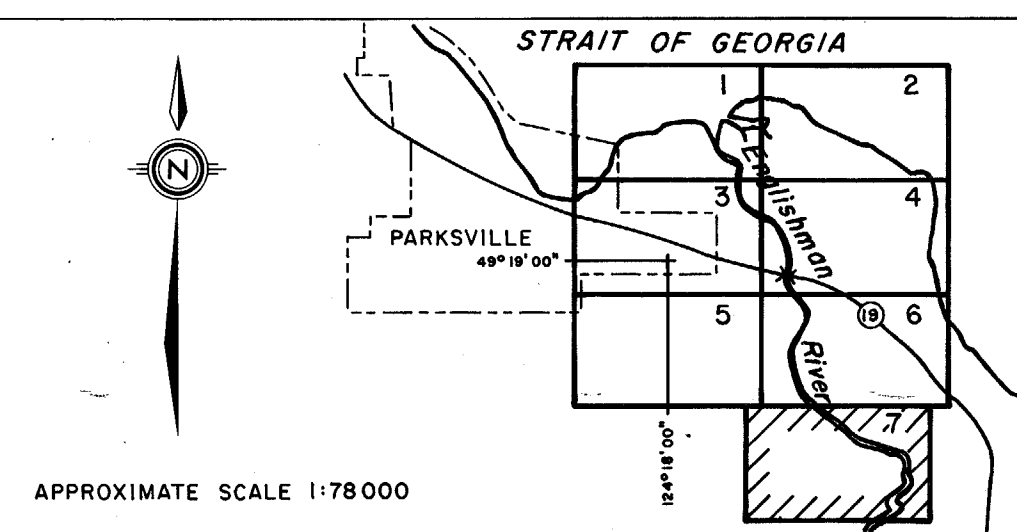
## FLOODPLAIN DATA

- The Designated Flood has a statistical frequency of occurrence of once every 200 years.
- Flood levels were computed using a standard step method modelling technique, assuming open water flow conditions.
- Floodplain limits assume the absence of all dykes.
- Floodplain limits and flood levels include allowance for freeboard.
- Position of floodplain boundary not established on the ground by legal survey.
- Floodplain limits are not delineated for side streams and tributaries.
- Required setback of buildings from the natural boundaries of lakes and watercourses to allow for the passage of floodwaters and possible bank erosion are not shown. This information is available either through local municipalities or the Ministry of Environment.

## LEGEND



## KEY MAP



## REVISIONS

No.	DESCRIPTION	DATE
1		
2		
3		
4		
5		
6		

TOPOGRAPHIC MAPPING  
DATE OF PHOTOGRAPHY  
APRIL 1980

FLOODPLAIN STUDIES  
TECHNICIAN  
3rd Rank  
ENGINEER  
R.W. Nilsen

ISSUE OF MAPPING  
DATE  
APRIL 1985



Province of British Columbia  
Ministry of Environment  
Water Management Branch

**FLOODPLAIN MAPPING**  
**ENGLISHMAN RIVER**

50m 0 50 100 150 200m  
SCALE 1:2000

Recommended: [Signature]  
Approved: [Signature]  
Deputy Minister

FILE No.

0305030-19

SCALE

1:2 000

NEGATIVE No.

DRAWING No.

85-23-7

SHEET

7 of 7

260808

DD11