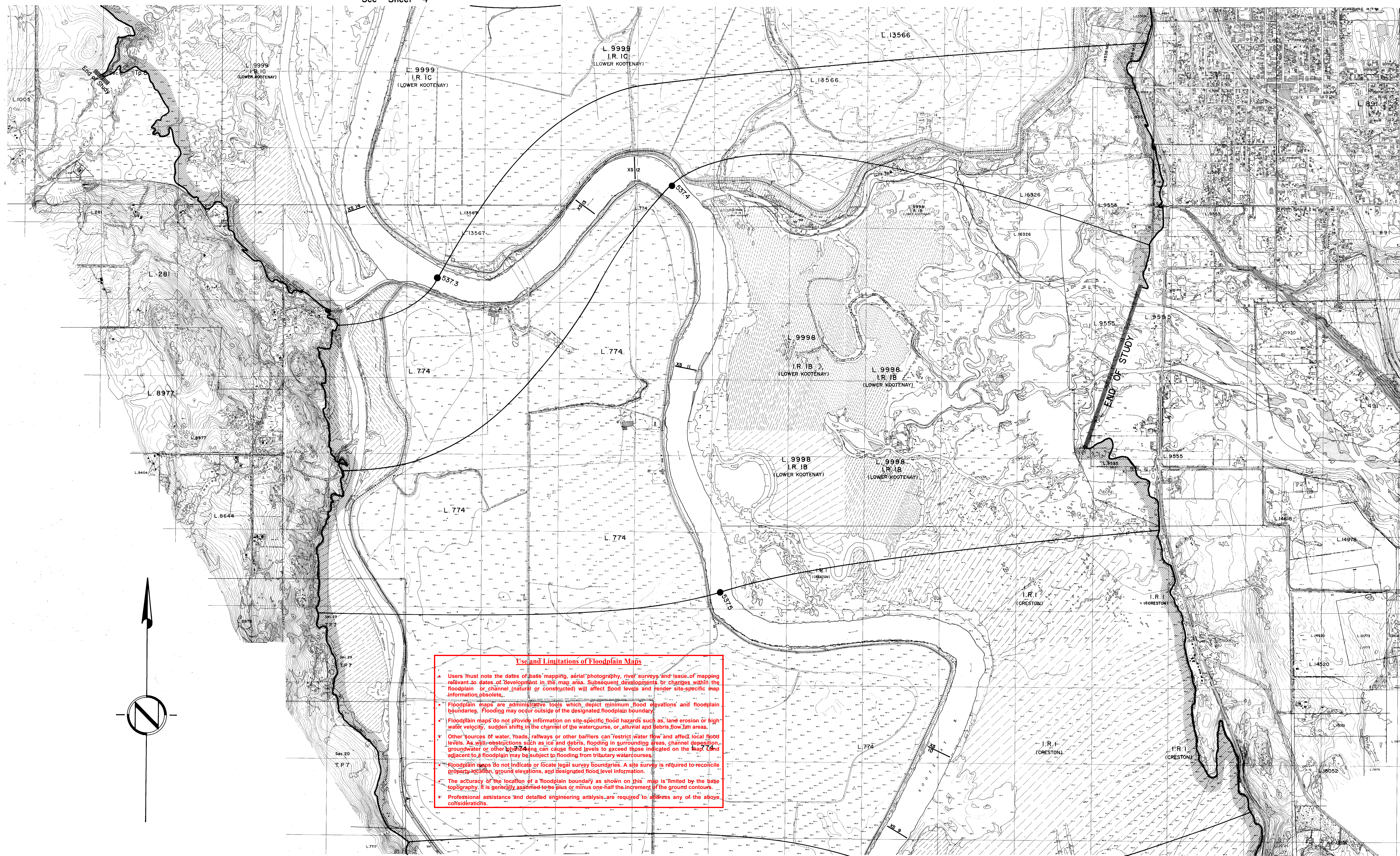


See Sheet 4



See Sheet 6

#### NOTES

Produced by: British Columbia Water Management Branch,  
Floodplain Mapping Program

Survey:  
Field survey done by Surveys Subsection,  
Water Management Branch.

Mapping:  
Base mapping done by Mapping Section, Survey and  
Mapping Branch.

a) Contour interval - 2 metres and greater; spot elevation shown  
to 0.1 metres, with accuracy to  $\pm 0.3$  metres, except  
as noted.

b) Grid origin referred to U.T.M. Projection, Zone 11 (1975)  
Final Floodplain Mapping produced by Planning Subsection  
Water Management Branch.

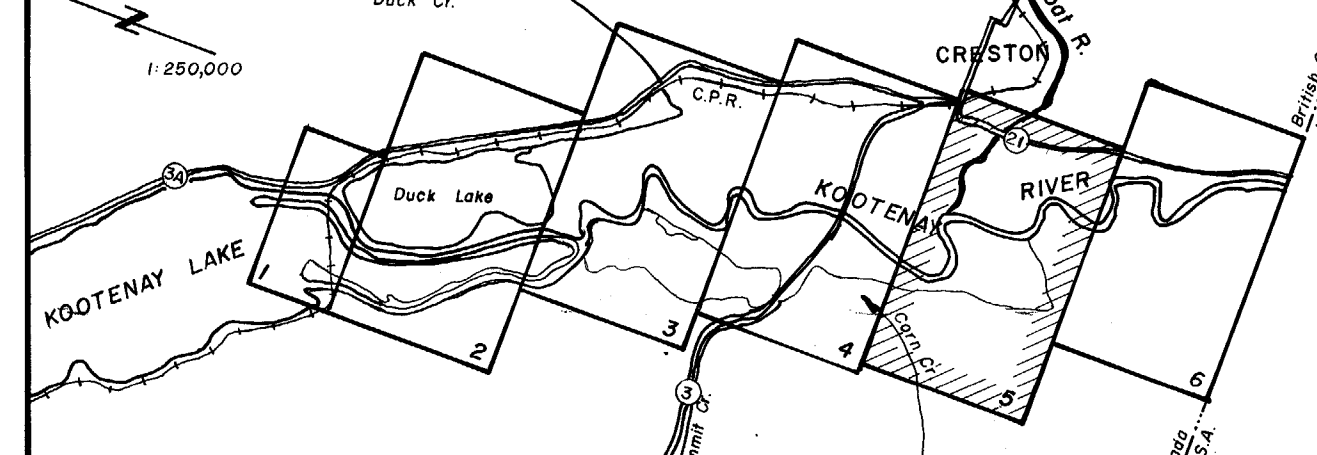
#### FLOODPLAIN DATA

- Floodplain limits and flood profiles were computed using a standard  
step method modelling technique.
- Floodplain limits assume the absence of all dikes.
- Floodplain limits are not delineated for side streams or tributaries,  
except where noted.
- Floodplain limits and flood levels include allowances for  
freeboard.
- Position of floodplain boundary not established on ground by  
legal survey.
- Required setback of buildings from the natural boundary of lakes  
and watercourses to allow for the passage of flood waters  
and possible bank erosion is not shown. This information is  
available either through the Regional District of Central  
Kootenay or Ministry of Environment.

#### LEGEND

- 200 Year  
Floodplain Limit**
- Flood levels in  
metres above G.S.C.D.
- 537.0 200 Year Frequency**
- (freeboard included)

#### KEY MAP



#### REVISIONS

No.	DESCRIPTION	DATE
1	DATE OF PHOTOGRAPHY June 1972	
2	MAPPING INFORMATION CHECKED L.S.	
3	FLOODPLAIN MAPPING CHECKED R.W.N.	
4	ISSUE OF MAPPING DATE August 1981	

#### TOPOGRAPHIC MAPPING

DATE OF PHOTOGRAPHY  
June 1972

MAPPING INFORMATION  
CHECKED L.S.

FLOODPLAIN MAPPING  
CHECKED R.W.N.

ISSUE OF MAPPING  
DATE August 1981



Province of  
British Columbia

Ministry of Environment  
Water Management Branch

### FLOODPLAIN MAPPING KOOTENAY RIVER Kootenay Lake to U.S. Border

Scale 1:10,000

Scale 1" = 1000 feet

Scale 1" = 300 metres

Scale 1" = 1000 feet

Scale 1" = 300 metres

Scale 1" = 1000 feet

Scale 1" = 300 metres

25428

FILE No.  
0305030-6

SCALE  
1:10,000

DRAWING No.  
A5278-5

SHEET  
5 of 6