

5 455 500 - 485 500

5 455 500 - 485 500

SEE SHEET 1

SEE SHEET 3

#### Use and Limitations of Floodplain Maps

- Users must note the dates of base mapping, aerial photography, river surveys and issue of mapping relevant to dates of development in the map area. Subsequent developments or changes within the floodplain or channel (natural or constructed) will affect flood levels and render site-specific map information obsolete.
- Floodplain maps are administrative tools which depict minimum flood elevations and floodplain boundaries. Flooding may occur outside of the designated floodplain boundary.
- Floodplain maps do not provide information on site-specific flood hazards such as, land erosion or high water velocity, sudden shifts in the channel of the watercourse, or alluvial and debris flow fan areas.
- Other sources of water, roads, railways or other barriers can restrict water flow and affect local flood levels. As well, obstructions such as ice and debris, flooding in surrounding areas, channel deposition, groundwater or other phenomena can cause flood levels to exceed those indicated on the map. Land adjacent to a floodplain may be subject to flooding from tributary watercourses.
- Floodplain maps do not indicate or locate legal survey boundaries. A site survey is required to reconcile property location, ground elevations, and designated flood level information.
- The accuracy of the location of a floodplain boundary as shown on this map is limited by the base topography. It is generally assumed to be plus or minus one-half the increment of the ground contours.
- Professional assistance and detailed engineering analysis are required to address any of the above considerations.

Acres International Limited  
Vancouver, B.C., Canada

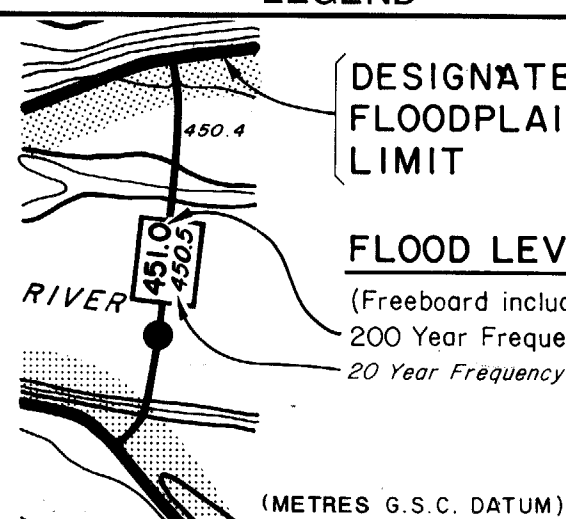
#### NOTES

Produced by: Acres International Limited  
4th Floor, 845 Combe St.  
Vancouver, B.C. V6B 2P4 (Dec., 1990)  
Survey: River survey done by Surveys Section,  
Water Management Branch, Projects 88P-4  
(April, 1986) and 88PDC-4 (Sept.-Oct., 1988)  
a) Horizontal control based on provincial  
network.  
b) Elevations are in metres and are  
referred to Geodetic Survey of Canada  
Datum, 1985.  
Mapping: Base mapping done by Map Production  
Division, Surveys and Resource Mapping  
Branch, Project 88-023 (Nov., 1988)  
a) Contour Interval: 1 metre and greater;  
spot elevations shown to 0.1 metres,  
with accuracy to  $\pm 0.3$  metres, except  
where noted.  
b) Grid origin referred to U.T.M.  
Projection Zone 11.

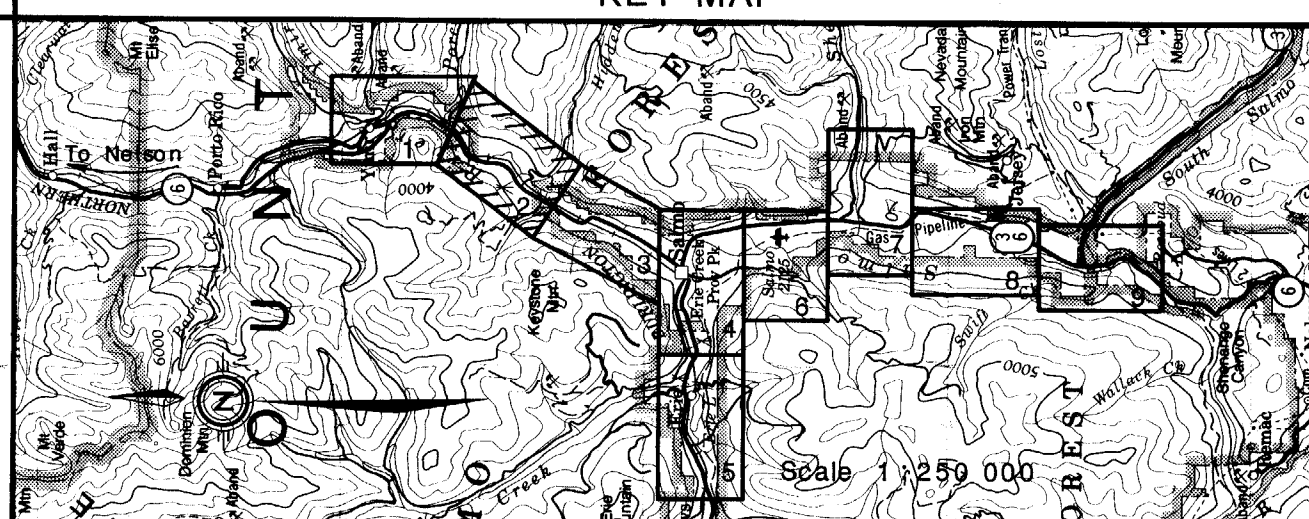
#### FLOODPLAIN DATA

- The floodplain areas as depicted on this map have been designated pursuant to the Canada/British Columbia Floodplain Mapping Agreement (1988) by the Minister of the Environment for Canada and the Minister of Environment for British Columbia.
- Flooding may still occur outside of the designated floodplain areas. The Ministers do not assume any liability by reason of the designation or failure to designate areas on this map.
- The Designated Flood has a statistical frequency of occurrence of once every 200 years.
- The flood levels were computed using a standard step method modelling technique, assuming open water flow conditions.
- The floodplain limits assume the absence of all dikes.
- The floodplain limits and flood levels include an allowance for freeboard.
- The floodplain limits are not established on the ground by legal survey.
- The floodplain limits are not delineated for side streams and tributaries.
- The required setback of buildings from the natural boundaries of lakes and watercourses to allow for the passage of floodwaters and possible bank erosion is not shown. This information is available either through local municipalities or the Ministry of Environment.
- MAPS AVAILABLE FROM THE MINISTRY OF CROWN LANDS, SURVEYS AND RESOURCE MAPPING BRANCH, MAPS B.C., MAP AND AIR PHOTO SALES, VICTORIA, B.C.

#### LEGEND



#### KEY MAP



#### REVISIONS

No.	DESCRIPTION	DATE
1	ISSUE OF MAPPING	SEPT. 30, 1991
2	DRAWN	T. E.
3	CHECKED	M.N.-P.
4	RIVER SURVEY	T. M. D.
5	DESIGNED	B. B.
6	ENGINEER	[Signature]

DATE  
SEPT. 30, 1991

DRAWN  
T. E.

CHECKED  
M.N.-P.

RIVER SURVEY  
T. M. D.

DESIGNED  
B. B.

ENGINEER  
[Signature]

ENVIRONMENT CANADA  
INLAND WATERS  
ENVIRONNEMENT CANADA  
Eaux Intérieures

BRITISH COLUMBIA MINISTRY  
OF ENVIRONMENT  
COLOMBIE-BRITANNIQUE MINISTÈRE  
DE L'ENVIRONNEMENT

CANADA-BRITISH COLUMBIA  
FLOODPLAIN MAPPING AGREEMENT  
L'ACCORD CANADA-COLOMBIE-BRITANNIQUE  
SUR LA CARTOGRAPHIE DES PLAINES D'INONDATION

FLOODPLAIN MAPPING  
SALMO RIVER  
YMR TO SOUTH SALMO RIVER  
(Including Erie Creek)

Scale in metres  
100m 0 100 200 300 400 500m

FILE No.  
33-0200-S.2

N.T.S. MAP No.  
82F/3.6

SCALE  
1:5 000

NEGATIVE No.

DRAWING No. REV.

90-32-2

SHEET 2 of 9