

South Surrey Colebrook/Mud Bay

s_surrey_9

Local Diking Authorities

City of Surrey
Colebrook Dyking District
Mud Bay Dyking District
Surrey Dyking District

Legend

- Pumpstation / Floodbox
- Pumpstation
- Floodbox
- Open Culvert
- Staff Gauge
- Dike Crest Gauge
- Water Survey Canada (WSC) Real Time Gauge
- Relief Well
- Low Dike
- Special Concern
- Metric Stationing 0+000
- Imperial Stationing 0+00
- Flood Profile Points Incl. Freeboard ↑
- Flood Profile Line
- RipRap
- Local Authority Standard Dike §
- Local Authority Non-Standard Dike §§
- Other Flood Control Works
- Fish and Wildlife Water Related Structure
- Dikes Outside Local Area (See Note 1)
- Floodplain
- Municipal Boundary
- Indian Reserves
- Municipal Park
- Provincial Park
- Regional District Park
- Water Pipeline
- Sewer Pipeline
- Gas Pipeline
- Energy Pipeline
- Oil
- Electrical transmission line
- Pipeline
- Rail Line

Note 1: Dikes are shown for reference purposes and are outside local diking authority area.

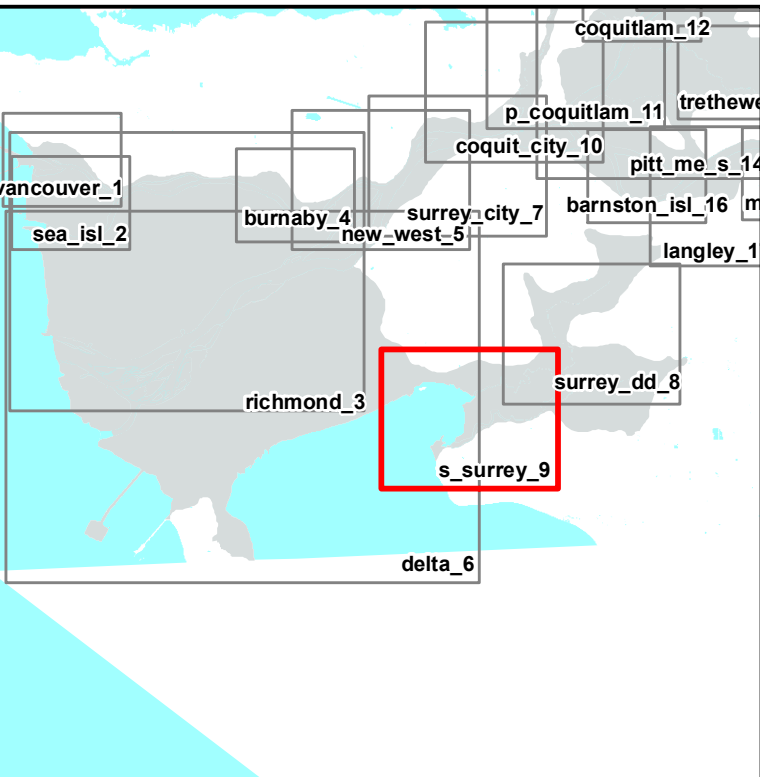
Notes Specific to Local Diking Authorities

City of Surrey
1973 Fraser River Flood Control Program (FRFCP) Proj. 10.2 - Rehabilitation of Serpentine and Nicomekl River Sea Dams;
1983/84/85 Flood Control Projects Crescent Beach East Dike and Crescent Beach Sea Dike
1983/84 Flood Control Projects - Mud Bay Dike from Surrey/Delta Border to Colebrook D.D. West Boundary and Serpentine River Dike from Colebrook D.D. East Boundary to King George Highway;
2000/01 Flood Protection Assistance Fund (FPAF) 00-02-42 - Crescent Beach Upgrading

Colebrook Dyking District -
1983/84 Flood Control Project Serpentine / Mud Bay Dike - west boundary to Highway 99;
1984/85 Flood Control Project Serpentine River Dike - east boundary to Highway 99;
1998/99 Flood Protection Assistance Fund (FPAF) 98-02-11 - Serpentine River - Upstream Site: downstream from east boundary; Downstream Site: upstream of Hwy 99.

Mud Bay Dyking District -
1983/84 Flood Control Project Nicomekl River Dike
1984/85 Flood Control Project Serpentine River Dike
2000/01 Flood Protection Assistance Fund (FPAF) 00-02-21 - replace Floodboxes ID #196 and ID #200
2001/02 Flood Protection Assistance Fund (FPAF) 01-02-10 - replace Floodbox ID #197

Index Map



South Surrey Colebrook/Mud Bay

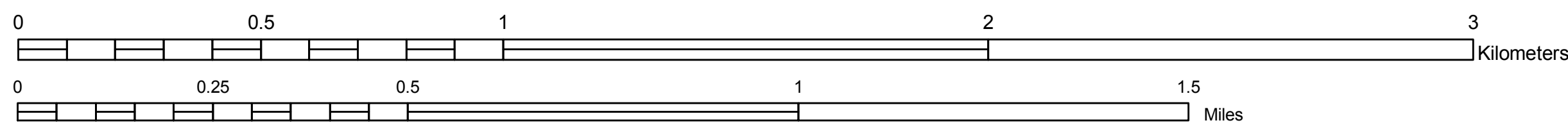
s_surrey_9

Map produced for Ministry of Forests, Lands
and Natural Resource Operations
South Coast Region

Map Projection: Albers, NAD83
Grid Projection: UTM Zone 10N, NAD 83
Revised Date: June 1, 2011
File: s_surrey_9

SOUTH SURREY/COLEBROOK/MUD BAY

1:10,000



IMPORTANT NOTICE & DISCLAIMER

The floodplain boundaries and related flood protection infrastructure shown are provided to support flood emergency preparedness, planning & response; broad-based floodplain management, planning & reviews; and other related activities. It is NOT intended to replace detailed floodplain maps designated under the 1987 Canada/BC Floodplain Mapping Agreement.

FLOODING MAY OCCUR OUTSIDE OF THE FLOODPLAIN AREAS SHOWN.

The data was compiled from various sources; it is not warranted as to its accuracy or sufficiency by the Ministry of Forests, Lands and Natural Resource Operations and is not intended for legal purposes.

§ Standard dike - a flood protection structure that meets, or has met, provincial dike standards that are regulated by the Inspector of Dikes under the Dike Maintenance Act.
Due to morphological, hydrological, and other changes in or about river systems, such a dike shown on the map may not continue to meet current standards.
IMPORTANT: To verify a standard dike's current status, the Inspector of Dikes office should be contacted.

§§ Non-standard dike - a flood protection structure that has a lower level of protection than that provided by a standard dike. Flood protection works that conform to this classification often protect rural agricultural lands and are sometimes referred to as agricultural dikes.